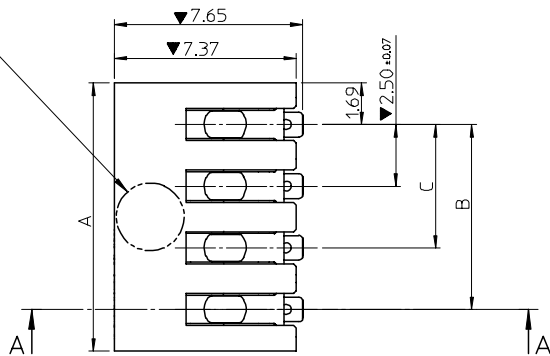
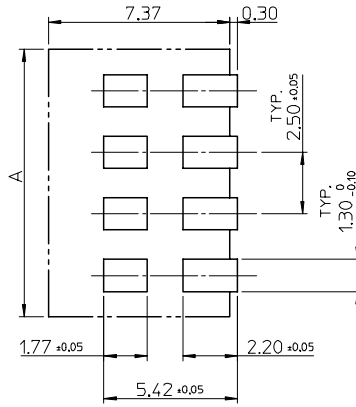


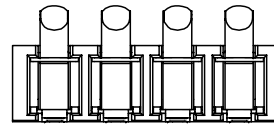
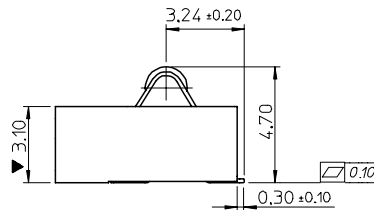
PICK-N-PLACE AREA  
2.75 MIN. NOZZLE AREA



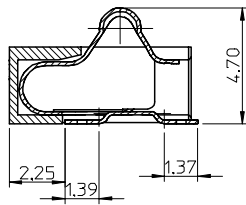
TAPE FEED DIRECTION →



RECOMMENDED PCB LAYOUT



Section A-A



NOTES:

1. MATERIAL :

HOUSING : LIQUID CRYSTAL POLYMER (LCP) 30% GLASS FILLED,  
UL 94V-0 , COLOR : BLACK .

TERMINAL : BERYLLIUM COPPER (BeCu) , 190 HM (TM04),  
THICKNESS : 0.15mm +/- 0.01mm, PER : 67999-0101

2. FINISH :

CONTACT AREA : GOLD (Au) , THICKNESS = 3 MICROINCH MINIMUM  
/ 0.08 MICROMETER MINIMUM.

OVER PALLADIUM NICKEL (Pd/Ni, 80/20),  
THICKNESS=25 MICROINCH MINIMUM,  
/ 0.64 MICROMETER MINIMUM.

SOLDER TAIL : PURE TIN THICKNESS = 150  
MICROINCH MINIMUM, / 3.8 MICROMETER MINIMUM.

UNDER PLATE : SOFT NICKEL (Ni) OVERALL, THICKNESS= 50  
MICROINCH MINIMUM, / 1.3 MICROMETER MINIMUM.

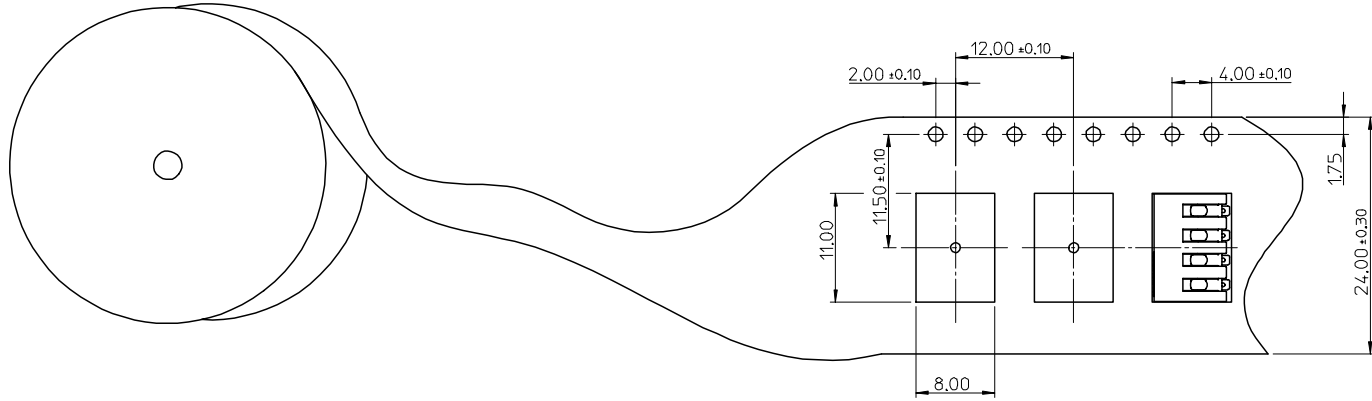
3. PACKAGING SPECIFICATION REFER TO: PK-67370-001

4. PRODUCT SPECIFICATION REFER TO: PS-67370-001

P/N	CKTS	A	B	C
67370-8001	4	10.87±0.15	7.50	5.00
67370-8003	3	8.37±0.15	/	5.00
67370-8002	2	5.87±0.15	/	/
67370-8004	4	10.87±0.15	7.50	5.00

NEW RELEASE EC NO: DRAWN: LISA 2004/11/10 CHKD: HARVEY APPR:	QUALITY SYMBOLS ▽ = 4 ∇ = 0	GENERAL TOLERANCES (UNLESS SPECIFIED)		SCALE 5:1	DESIGN UNITS METRIC	THIRD ANGLE PROJECTION	REVISE ON CAD ONLY
				DIMENSION STYLE MM ONLY		TITLE 2.50 MM	
				DRAWN BY LISA DATE 2004/11/10		SMT BATTERY CONNECTOR (LEAD-FREE)	
				CHECKED BY HARVEY DATE 2004/11/11		MOLEX INCORPORATED	
A	REV	DRAFT WHERE APPLICABLE MUST REMAIN WITHIN DIMENSIONS		APPROVED BY	DATE	MATERIAL NO. SEE TABLE	DOCUMENT NO. SD-67370-003
				THIS DRAWING CONTAINS INFORMATION THAT IS PROPRIETARY TO MOLEX INCORPORATED AND SHOULD NOT BE USED WITHOUT WRITTEN PERMISSION			

10 9 8 7 6 5 4 3 2 1



TAPE FEED DIRECTION

F

E

D

C

B

A

F

E

D

C

B

A

NEW RELEASE	EC NO: 2004/11/10	DRAWN: LISA	CHKD: HARVEY	APPR:	QUALITY SYMBOLS	GENERAL TOLERANCES (UNLESS SPECIFIED)		SCALE 2:1	DESIGN UNITS METRIC	THIRD ANGLE PROJECTION	REVISE ON CAD ONLY
					= 0 = 0	mm	INCH	DIMENSION STYLE MM ONLY		TITLE	
						4 PLACES ± ---	± ---	DRAWN BY LISA		DATE 2004/11/10	
						3 PLACES ± ---	± ---	CHECKED BY HARVEY		DATE 2004/11/11	
2 PLACES ± 0.25	± ---	APPROVED BY		DATE	MATERIAL NO.	DOCUMENT NO.	SHEET NO.				
1 PLACE ± 0.25	± ---	DRAFT WHERE APPLICABLE MUST REMAIN WITHIN DIMENSIONS			SEE SHEET 1	SD-67370-003	2 OF 2				
					ANGULAR ± 3 °		THIS DRAWING CONTAINS INFORMATION THAT IS PROPRIETARY TO MOLEX INCORPORATED AND SHOULD NOT BE USED WITHOUT WRITTEN PERMISSION				

2.50 MM  
SMT BATTERY CONNECTOR  
(LEAD-FREE)  
 MOLEX INCORPORATED