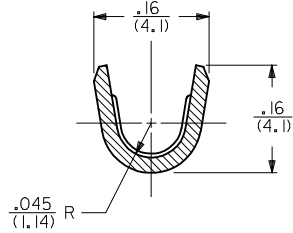
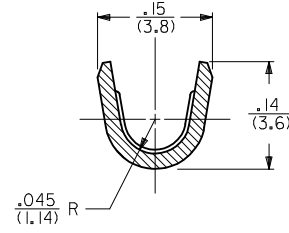


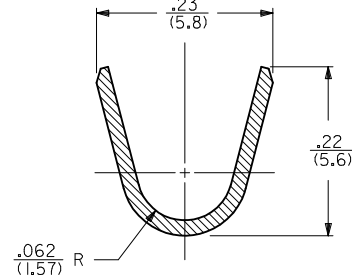
SECTION A-A  
SCALE 8:1



SECTION B-B  
SCALE 8:1  
14 AWG WIRE



SECTION B-B  
SCALE 8:1  
18-16 AWG WIRE



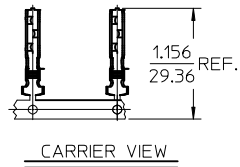
SECTION C-C  
SCALE 8:1

NOTES:

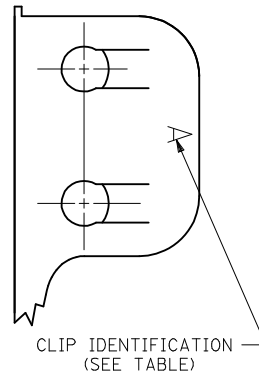
1. THIS GROUND CLIP CRIMPS TO #14- #18 AWG WIRE WITH .031/(.79) THICK INSULATION, SEE CHART, AND IS INTENDED FOR USE ONLY AS A SECONDARY GROUND.

MATERIAL:

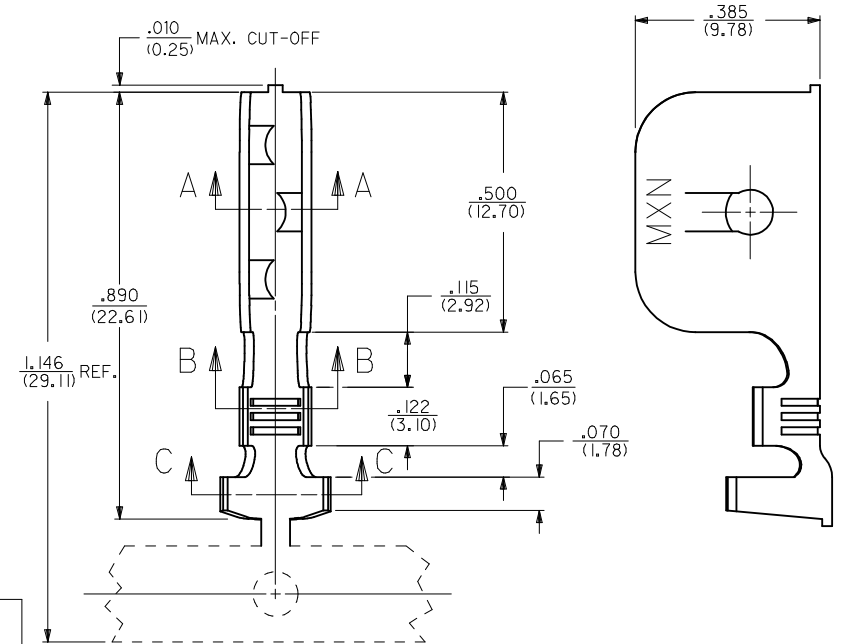
STEEL, STAINLESS, TYPE 301,  
.020/(.51) THICK.



CARRIER VIEW

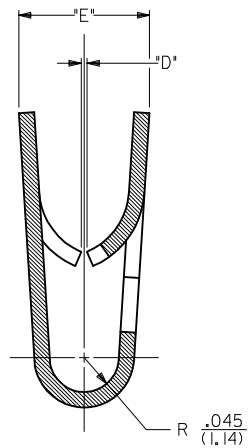


CLIP IDENTIFICATION  
(SEE TABLE)

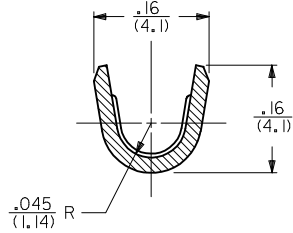


PART NO.	ENG. NO.	DIM. "D"	DIM. "E"	PANEL THICKNESS RANGE	WIRE GAGE	DOUBLE WIRE COMBINATION
040-06-2015	42172-BBI	.025/(0.64)	.17/(4.3)	.035/(0.89)-.050/(1.27)	14 AWG	(2) #16 AWG
040-06-2014	42172-AAI	.008/(0.20)	.15/(3.8)	.015/(0.38)-.035/(0.89)	14 AWG	
050-29-1597	42172-HI	.035/(0.89)	.17/(4.3)	.045/(1.14)-.060/(1.52)	18-16 AWG	
040-06-2017	42172-FI	.015/(0.38)	.15/(3.8)	.020/(0.51)-.030/(0.76)	18-16 AWG	
040-06-2013	42172-CI	.050/(1.27)	.17/(4.3)	.060/(1.52)-.075/(1.91)	18-16 AWG	(2) #18 AWG OR
040-06-2005	42172-BI	.025/(0.64)	.17/(4.3)	.035/(0.89)-.050/(1.27)	18-16 AWG	(1) #18 & (1) #16
040-06-2003	42172-AI	.008/(0.20)	.15/(3.8)	.015/(0.38)-.035/(0.89)	18-16 AWG	
040-06-2024	42172-GI	.004/(0.10)	.15/(3.8)	.015/(0.38)-.035/(0.89)	18-16 AWG	

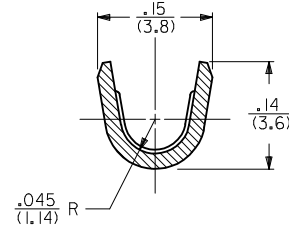
<b>MOVE DIM E</b> EC NO: UCP2015-5495 DRWN: J.MONTI 2015/06/25 CHKD: JHK/PPR 2015/06/25 APPR: F.S.MITH 2015/06/30	QUALITY SYMBOLS 	GENERAL TOLERANCES (UNLESS SPECIFIED) <table border="1"> <thead> <tr> <th></th> <th>mm</th> <th>INCH</th> </tr> </thead> <tbody> <tr> <td>4 PLACES</td> <td>± .10</td> <td>± .004</td> </tr> <tr> <td>3 PLACES</td> <td>± .12</td> <td>± .005</td> </tr> <tr> <td>2 PLACES</td> <td>± 0.25</td> <td>± .010</td> </tr> <tr> <td>1 PLACE</td> <td>± 0.35</td> <td>± .015</td> </tr> <tr> <td>0 PLACE</td> <td>±</td> <td>±</td> </tr> </tbody> </table>		mm	INCH	4 PLACES	± .10	± .004	3 PLACES	± .12	± .005	2 PLACES	± 0.25	± .010	1 PLACE	± 0.35	± .015	0 PLACE	±	±	DIMENSION STYLE <b>IN/MM</b>	SCALE <b>5:1</b>	DESIGN UNITS <b>INCH</b>	THIRD ANGLE PROJECTION
				mm	INCH																			
			4 PLACES	± .10	± .004																			
			3 PLACES	± .12	± .005																			
2 PLACES	± 0.25	± .010																						
1 PLACE	± 0.35	± .015																						
0 PLACE	±	±																						
DRAWN BY: MAB DATE: 07-24-92 CHECKED BY: KBP DATE: 07-24-92 APPROVED BY: RAS DATE: 07-24-92		MATERIAL NO. <b>SEE CHART</b>		DOCUMENT NO. <b>SD-42172--**</b>		SHEET NO. <b>1 OF 1</b>																		
<b>ANGULAR ±1/2°</b> DRAFT WHERE APPLICABLE MUST REMAIN WITHIN DIMENSIONS																								
THIS DRAWING CONTAINS INFORMATION THAT IS PROPRIETARY TO MOLEX INCORPORATED AND SHOULD NOT BE USED WITHOUT WRITTEN PERMISSION																								



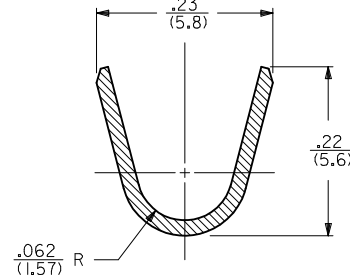
SECTION A-A  
SCALE 8:1



SECTION B-B  
SCALE 8:1  
14 AWG WIRE



SECTION B-B  
SCALE 8:1  
18-16 AWG WIRE



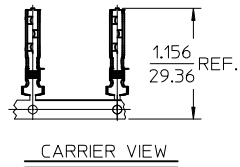
SECTION C-C  
SCALE 8:1

NOTES:

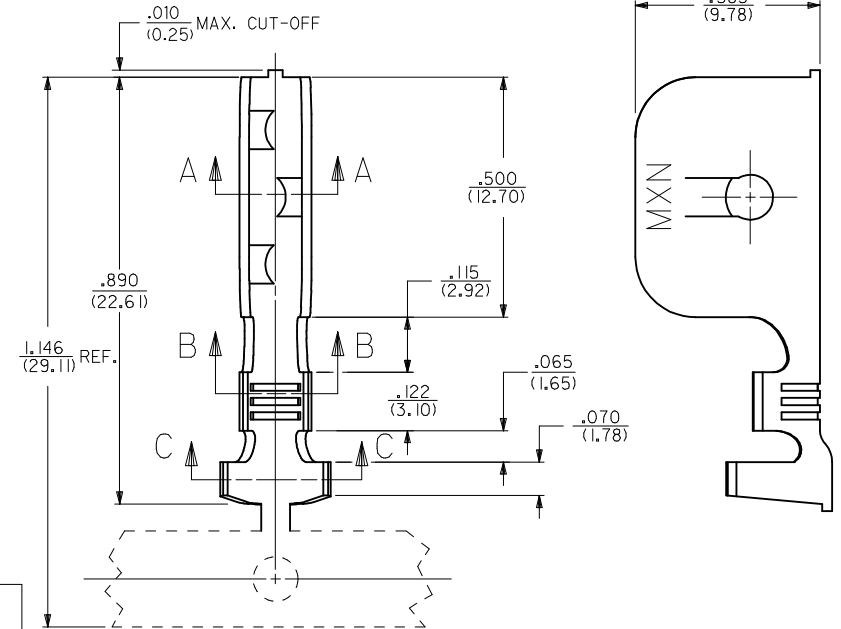
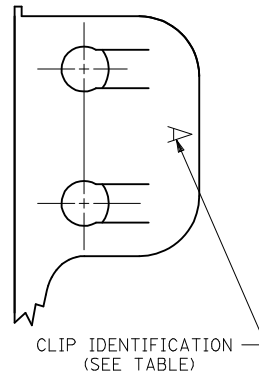
1. THIS GROUND CLIP CRIMPS TO #14- #18 AWG WIRE WITH .031/(.79) THICK INSULATION, SEE CHART, AND IS INTENDED FOR USE ONLY AS A SECONDARY GROUND.

MATERIAL:

STEEL, STAINLESS, TYPE 301,  
.020/(.51) THICK.



CARRIER VIEW



PART NO.	ENG. NO.	DIM. "D"	DIM. "E"	PANEL THICKNESS RANGE	WIRE GAGE	DOUBLE WIRE COMBINATION
040-06-2015	42172-BBI	.025/(0.64)	.17/(4.3)	.035/(0.89)-.050/(1.27)	14 AWG	(2) #16 AWG
040-06-2014	42172-AAI	.008/(0.20)	.15/(3.8)	.015/(0.38)-.035/(0.89)	14 AWG	
050-29-1597	42172-HI	.035/(0.89)	.17/(4.3)	.045/(1.14)-.060/(1.52)	18-16 AWG	
040-06-2017	42172-FI	.015/(0.38)	.15/(3.8)	.020/(0.51)-.030/(0.76)	18-16 AWG	
040-06-2013	42172-CI	.050/(1.27)	.17/(4.3)	.060/(1.52)-.075/(1.91)	18-16 AWG	(2) #18 AWG OR
040-06-2005	42172-BI	.025/(0.64)	.17/(4.3)	.035/(0.89)-.050/(1.27)	18-16 AWG	(1) #18 & (1) #16
040-06-2003	42172-AI	.008/(0.20)	.15/(3.8)	.015/(0.38)-.035/(0.89)	18-16 AWG	
040-06-2024	42172-GI	.004/(0.10)	.15/(3.8)	.015/(0.38)-.035/(0.89)	18-16 AWG	

<b>MOVE DIM E</b> EC NO: UCP2015-5495 DRWN: J.MONTI 2015/06/25 CHKD: JHK/PPR 2015/06/25 APPR: F.S.MITH 2015/06/30 REV: R3	QUALITY SYMBOLS 	GENERAL TOLERANCES (UNLESS SPECIFIED) <table border="1"> <thead> <tr> <th></th> <th>mm</th> <th>INCH</th> </tr> </thead> <tbody> <tr> <td>4 PLACES</td> <td>± .10</td> <td>± .004</td> </tr> <tr> <td>3 PLACES</td> <td>± .15</td> <td>± .005</td> </tr> <tr> <td>2 PLACES</td> <td>± 0.25</td> <td>± .010</td> </tr> <tr> <td>1 PLACE</td> <td>± 0.35</td> <td>± .015</td> </tr> <tr> <td>0 PLACE</td> <td>±</td> <td>±</td> </tr> </tbody> </table>		mm	INCH	4 PLACES	± .10	± .004	3 PLACES	± .15	± .005	2 PLACES	± 0.25	± .010	1 PLACE	± 0.35	± .015	0 PLACE	±	±	DIMENSION STYLE <b>IN/MM</b>	SCALE <b>5:1</b>	DESIGN UNITS <b>INCH</b>	THIRD ANGLE PROJECTION
				mm	INCH																			
			4 PLACES	± .10	± .004																			
			3 PLACES	± .15	± .005																			
2 PLACES	± 0.25	± .010																						
1 PLACE	± 0.35	± .015																						
0 PLACE	±	±																						
DRAWN BY: MAB DATE: 07-24-92 CHECKED BY: KBP DATE: 07-24-92 APPROVED BY: RAS DATE: 07-24-92		MATERIAL NO. <b>SEE CHART</b>		DOCUMENT NO. <b>SD-42172-***</b>		SHEET NO. <b>1 OF 1</b>																		
DRAFT WHERE APPLICABLE MUST REMAIN WITHIN DIMENSIONS																								
THIS DRAWING CONTAINS INFORMATION THAT IS PROPRIETARY TO MOLEX INCORPORATED AND SHOULD NOT BE USED WITHOUT WRITTEN PERMISSION																								