



Washer for EMERGENCY STOP, yellow, with inscription: NOT-HALT, outer diameter 75 mm, inside diameter 22.5 mm, thickness 2 mm, Z=100-unit packaging

product brand name	SIRIUS ACT
product designation	EMERGENCY STOP plate
product type designation	3SU1
General technical data	
shock resistance for railway applications acc. to DIN EN 61373	Category 1, Class B
vibration resistance for railway applications acc. to DIN EN 61373	Category 1, Class B
Accessories	
material of accessory	Plastic
fastening method of label	without
marking of backing plate	EMERGENCY-STOP
shape of backing plate	Round
color of backing plate	yellow/black (plate/text)
product function illuminated backing plate	No
Certificates/ approvals	
Further information	

Information- and Downloadcenter (Catalogs, Brochures,...)

<https://www.siemens.com/ic10>

Industry Mall (Online ordering system)

<https://mall.industry.siemens.com/mall/en/en/Catalog/product?mlfb=3SU1900-0BB31-0AT0-Z X90>

Cax online generator

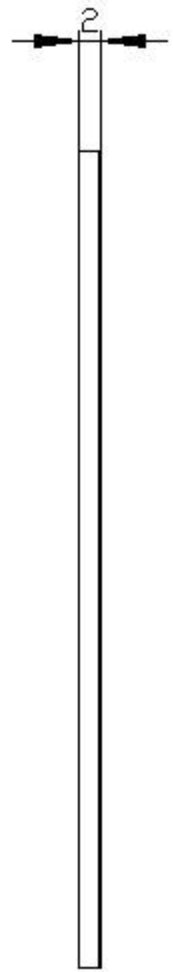
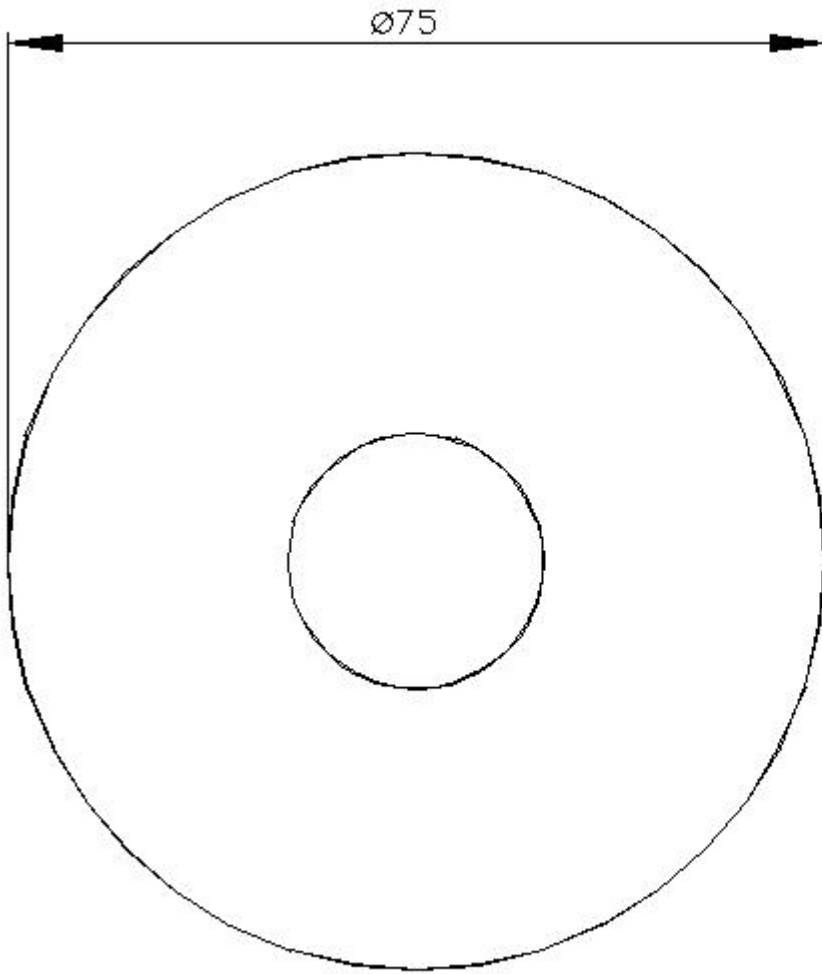
<http://support.automation.siemens.com/WW/CAXorder/default.aspx?lang=en&mlfb=3SU1900-0BB31-0AT0-Z X90>

Service&Support (Manuals, Certificates, Characteristics, FAQs,...)

<https://support.industry.siemens.com/cs/ww/en/ps/3SU1900-0BB31-0AT0-Z X90>

Image database (product images, 2D dimension drawings, 3D models, device circuit diagrams, EPLAN macros, ...)

http://www.automation.siemens.com/bilddb/cax_de.aspx?mlfb=3SU1900-0BB31-0AT0-Z X90&lang=en



last modified:

12/21/2020 