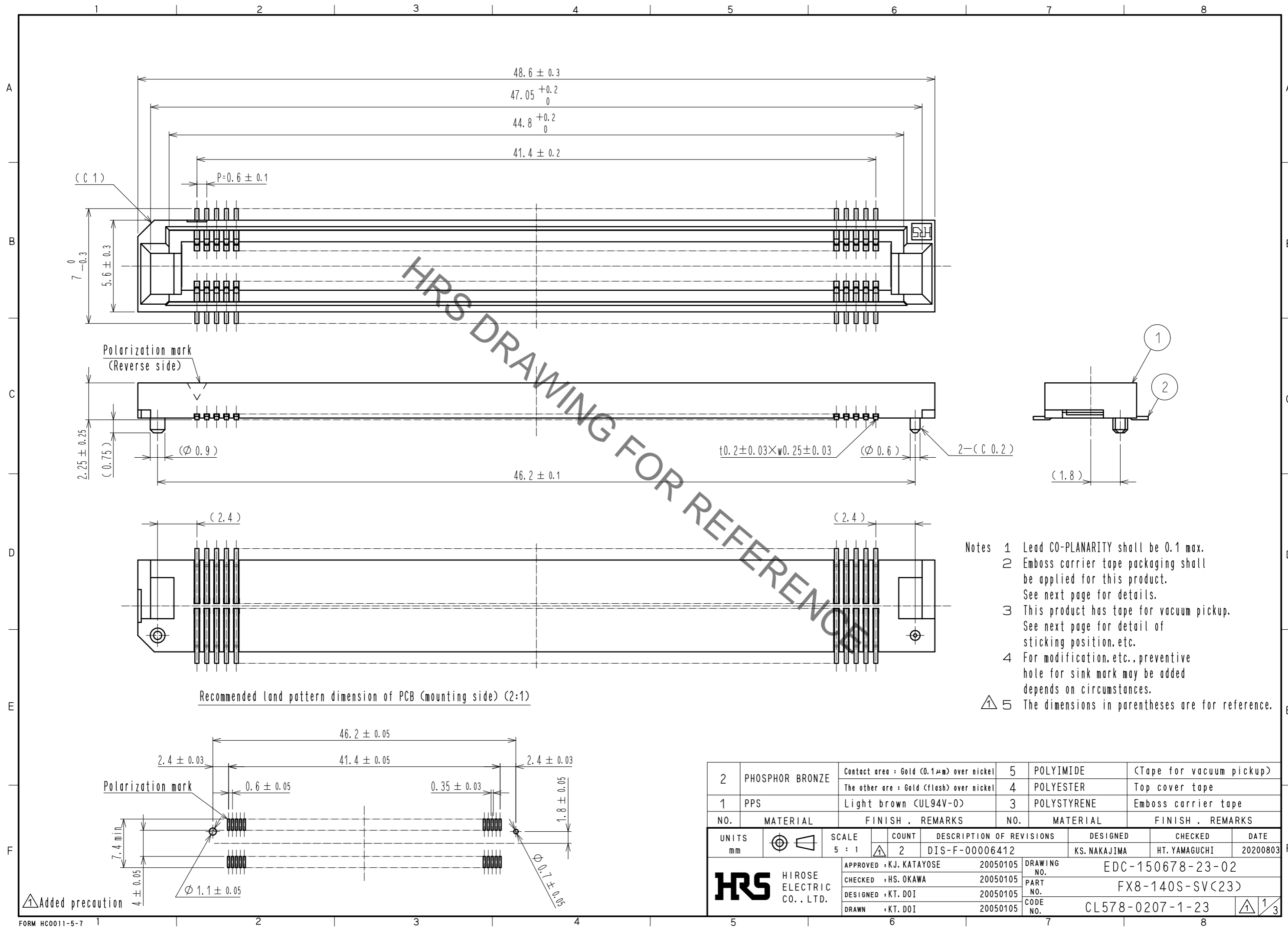
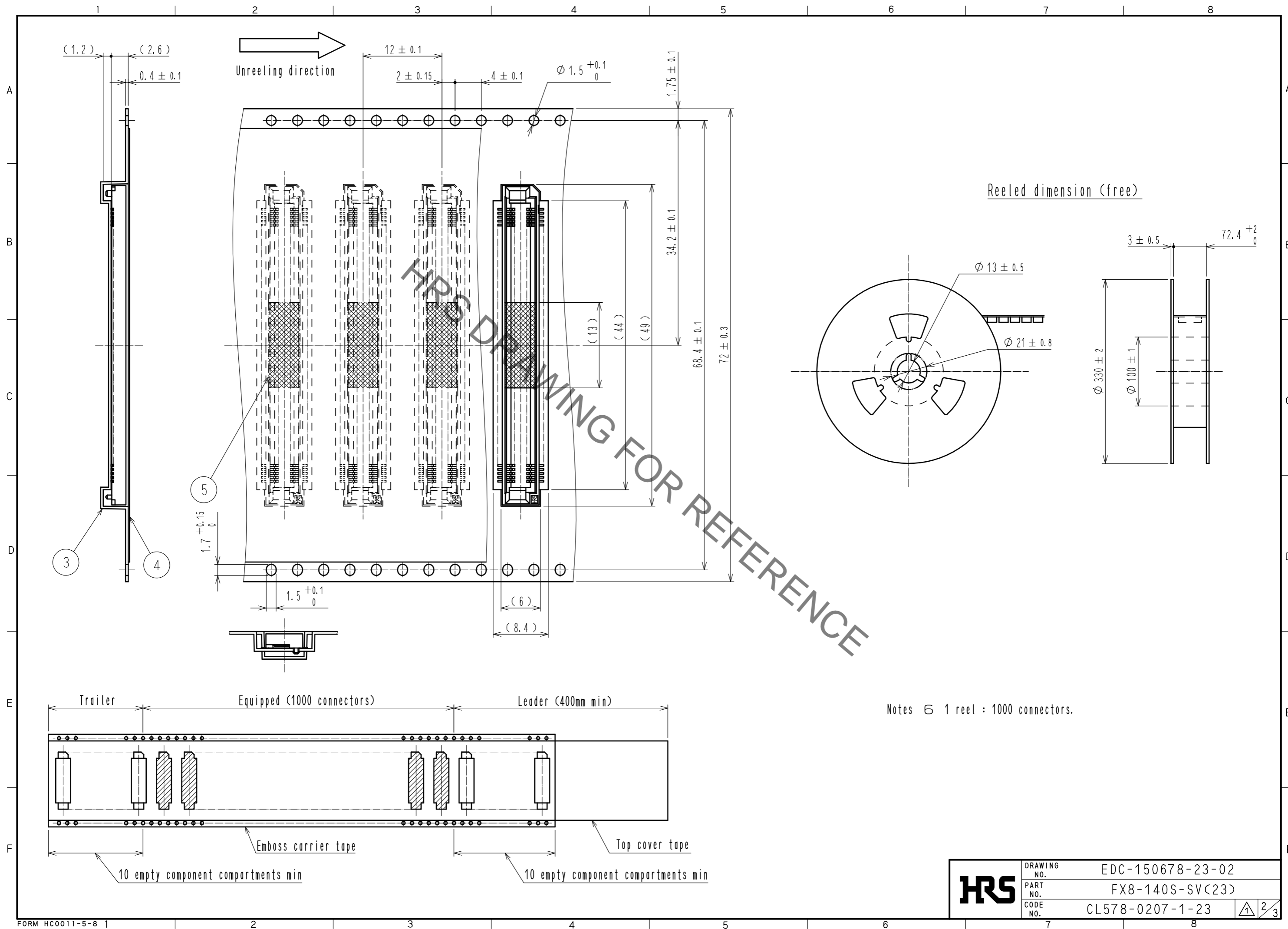


May.1.2023 Copyright 2023 HIROSE ELECTRIC CO., LTD. All Rights Reserved.
In case of consideration for using Automotive equipment / device which demand high reliability, kindly contact our sales window correspondents.



2	PHOSPHOR BRONZE	Contact area : Gold (0.1μm) over nickel	5	POLYIMIDE	(Tape for vacuum pickup)
		The other are : Gold (flash) over nickel	4	POLYESTER	Top cover tape
1	PPS	Light brown (UL94V-0)	3	POLYSTYRENE	Emboss carrier tape
NO.	MATERIAL	FINISH . REMARKS	NO.	MATERIAL	FINISH . REMARKS
UNITS		SCALE	COUNT	DESCRIPTION OF REVISIONS	
mm		5 : 1	2	DIS-F-00006412	
HRS HIROSE ELECTRIC CO., LTD.		APPROVED : KJ. KATAYOSE	20050105	DESIGNED	KS. NAKAJIMA
		CHECKED : HS. OKAWA	20050105	CHECKED	HT. YAMAGUCHI
		DESIGNED : KT. DOI	20050105	DATE	20200803
		DRAWN : KT. DOI	20050105	DRAWING NO. EDC-150678-23-02	
				PART NO. FX8-140S-SV(23)	
				CODE NO. CL578-0207-1-23	
				1/3	

May.1.2023 Copyright 2023 HIROSE ELECTRIC CO., LTD. All Rights Reserved.
 In case of consideration for using Automotive equipment / device which demand high reliability, kindly contact our sales window correspondents.



Notes ⑥ 1 reel : 1000 connectors.

HRS	DRAWING NO.	EDC-150678-23-02	
	PART NO.	FX8-140S-SV(23)	
	CODE NO.	CL578-0207-1-23	

May.1.2023 Copyright 2023 HIROSE ELECTRIC CO., LTD. All Rights Reserved.
In case of consideration for using Automotive equipment / device which demand high reliability, kindly contact our sales window correspondents.

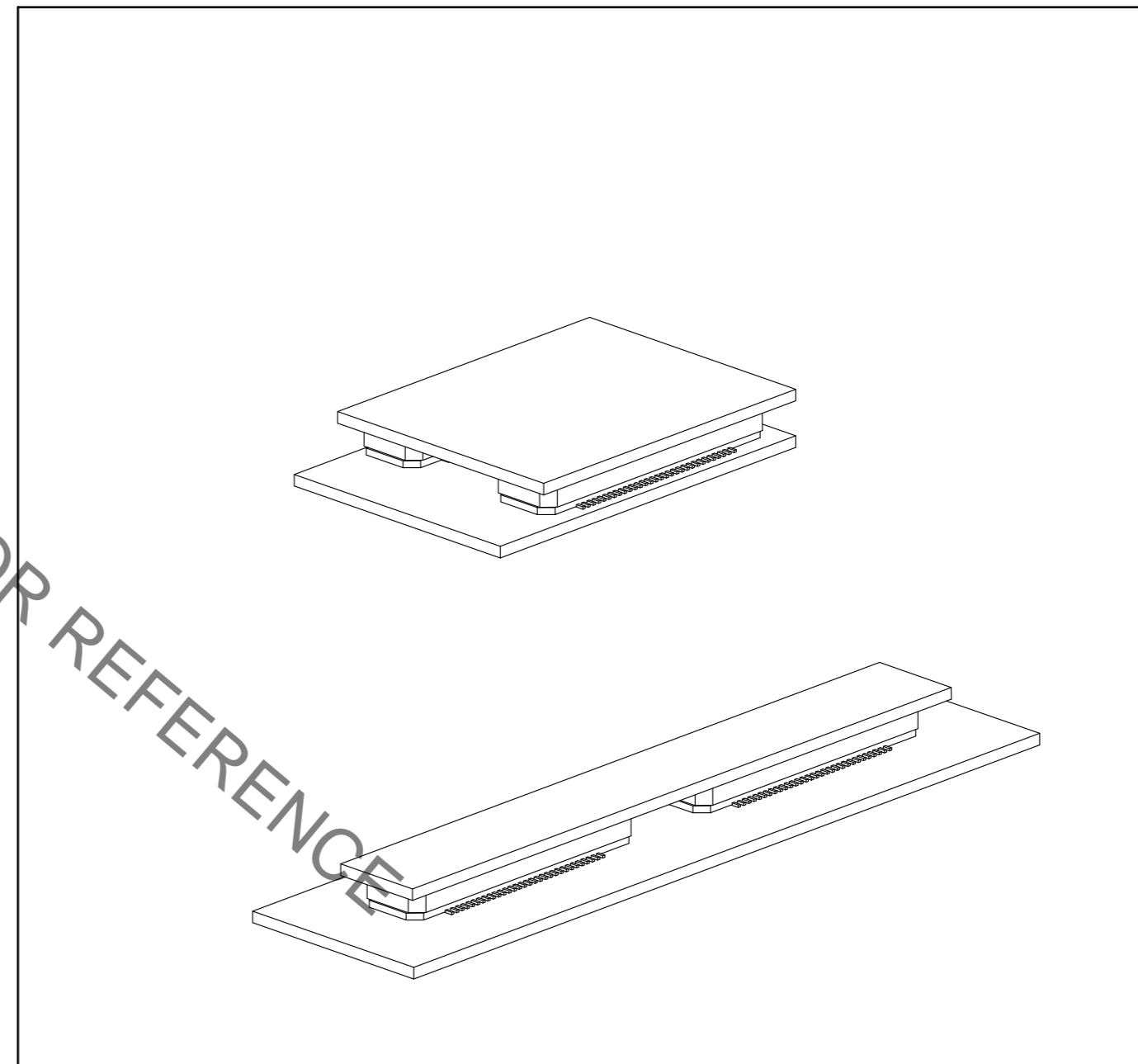
【 Precaution 】

When a board with multiple connectors mounted is mated, the connector may be damaged or deformed.
Please divide one side of the board so only one connector is mated per board.

OK



NG



HRS DRAWING FOR REFERENCE

HRS	DRAWING NO.	EDC-150678-23-02
	PART NO.	FX8-140S-SV(23)
	CODE NO.	CL578-0207-1-23
		3/3