

Feed-through terminal, Screw connection, Mounting type: Mounting rail TS 35/7.5, Rated cross-section: 120 mm², Width: 27 mm, Colour: Beige

Business data

| | |
|--|-----------------------|
| Article number | 17165.2 |
| Article name | SRK 120/2A BG |
| GTIN (EAN) | 4044211189372 |
| Packaging unit | 5 |
| Quantity unit | PC |
| Weight per piece (not including packaging) | 280.7 g |
| Weight per piece (including packaging) | 301.9 g |
| Unit of weight | G |
| Customs number | 85369010 |
| Country of origin | CZ |
| Prio-Article | 17165.2 |
| Product description | Feed-through terminal |

Technical data

Dimensions

| | |
|------------------|-------|
| Length | 91 mm |
| Width | 27 mm |
| Height TS 35/7.5 | 91 mm |

Ratings

| | |
|---|---------------------|
| Rated voltage | 1000 V |
| Rated current | 269 A |
| Current load, max. | 290 A |
| Rated cross-section | 120 mm ² |
| Rated impulse voltage | 8 kV |
| Overvoltage category | III |
| Contamination degree | 3 |
| Maximum power dissipation for nominal condition | 8.61 W |

Technical data

Connection data

| | |
|--|---------------------|
| Connection principle | Screw connection |
| Connection position | Lateral |
| Connections | 2 |
| Number of terminals per level | 2 |
| Number of levels | 1 |
| Wire cross-section single-core (rigid) / stranded, min. | 16 mm ² |
| Wire cross-section single core (rigid)/stranded, max. | 150 mm ² |
| Wire cross-section stranded, min. | 16 mm ² |
| Wire cross-section stranded, max. | 120 mm ² |
| Wire cross-section stranded with wire-end ferrules,min. | 16 mm ² |
| Wire cross-section stranded with wire-end ferrules,max. | 95 mm ² |
| Wire cross-section AWG, min. | 4 |
| Wire cross-section AWG, max. | 0000 |
| Stripping length | 27 mm |
| Screw head | Inner hex (Allen) |
| Screw threading | M 10 |
| Tightening torque, min. | 12 Nm |
| Tightening torque, max. | 20 Nm |
| Wire cross-section single-core (rigid) / stranded, AWGmax. | 0000 |
| Wire cross-section single-core (rigid) / stranded, AWGmin. | 4 |
| Wire cross-section stranded, AWG max. | 0000 |
| Wire cross-section stranded, AWG min. | 4 |
| Wire cross-section stranded with wire-end ferrules, AWG max. | 0000 |
| Wire cross-section stranded with wire-end ferrules, AWG min. | 4 |

Materials

| | |
|---------------------------|---------------|
| Insulation housing | Polyamide 6.6 |
| Flammability class UL 94 | V-0 |
| Working temperature, min. | -40 °C |
| Working temperature, max. | 120 °C |

Further technical data

| | |
|-------------------------------------|-------------------------|
| Mounting type | Mounting rail TS 35/7,5 |
| Gauge plug acc. to EN 60 947-1 | B13 |
| Number of cross-connection channels | 1 |
| Number of test pick-off options | 1 |

Technical data

Environmental Product Compliance

| | |
|--------------------------------|------------|
| REACH Conform | yes |
| REACH Reference date | 2022-06-10 |
| REACH Candidate Substance Note | No |
| RoHS Conform | yes |

Approvals

Standards and regulations

| | |
|--------------|----------------|
| EAC approval | TR ZU 004/2011 |
|--------------|----------------|

| | |
|----------------------|-----|
| EAC approval granted | yes |
|----------------------|-----|

cUL Recognized

| | |
|--------------|--------------|
| cUL approval | C22.2 No 158 |
|--------------|--------------|

| | |
|-------------------------------|-------|
| cUL Usegroup B: rated voltage | 600 V |
|-------------------------------|-------|

| | |
|-------------------------------|-------|
| cUL Usegroup B: rated current | 228 A |
|-------------------------------|-------|

| | |
|-------------------------------|-------|
| cUL Usegroup C: rated voltage | 600 V |
|-------------------------------|-------|

| | |
|-------------------------------|-------|
| cUL Usegroup D: rated voltage | 600 V |
|-------------------------------|-------|

| | |
|-------------------------------|-------|
| cUL Usegroup D: rated current | 228 A |
|-------------------------------|-------|

| | |
|-------------------------------|--------|
| cUL Usegroup E: rated voltage | 1000 V |
|-------------------------------|--------|

| | |
|-------------------------------|-------|
| cUL Usegroup E: rated current | 228 A |
|-------------------------------|-------|

| | |
|--|---|
| cUL wire cross-section single-core (rigid) AWG, min. | 4 |
|--|---|

| | |
|--|-----|
| cUL wire cross-section single-core (rigid) AWG, max. | 4/0 |
|--|-----|

| | |
|---|---|
| cUL wire cross-section stranded AWG, min. | 4 |
|---|---|

| | |
|---|-----|
| cUL wire cross-section stranded AWG, max. | 4/0 |
|---|-----|

| | |
|------------------|-------|
| cUL torque, min. | 12 Nm |
|------------------|-------|

| | |
|------------------|-------|
| cUL torque, max. | 20 Nm |
|------------------|-------|

| | |
|-------------------|----|
| cUL wire material | Cu |
|-------------------|----|

| | |
|----------------|---|
| cUL Recognized | 1 |
|----------------|---|

KEMA KEUR approval

| | |
|--------------------|-------------------|
| KEMA KEUR approval | EN 60947-7-1:2009 |
|--------------------|-------------------|

| | |
|----------------------------|-----|
| KEMA KEUR approval granted | yes |
|----------------------------|-----|

| | |
|--------------------|--------|
| KEMA rated voltage | 1000 V |
|--------------------|--------|

| | |
|--------------------|-------|
| KEMA rated current | 269 A |
|--------------------|-------|

| | |
|----------------------------|------|
| KEMA rated impulse voltage | 8 kV |
|----------------------------|------|

| | |
|---|--------------------|
| KEMA wire cross-section single core (rigid), min. | 16 mm ² |
|---|--------------------|

| | |
|---|---------------------|
| KEMA wire cross-section single-core (rigid), max. | 150 mm ² |
|---|---------------------|

| | |
|--|--------------------|
| KEMA wire cross-section stranded, min. | 16 mm ² |
|--|--------------------|

| | |
|--|---------------------|
| KEMA wire cross-section stranded, max. | 150 mm ² |
|--|---------------------|

| | |
|-------------------|-------|
| KEMA torque, min. | 12 Nm |
|-------------------|-------|

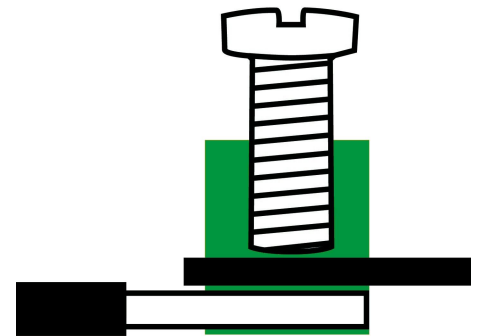
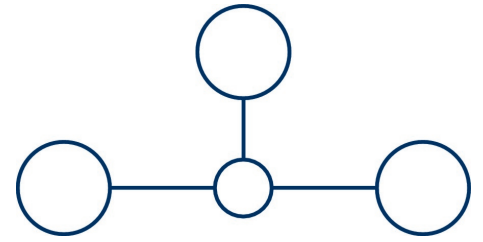
| | |
|-------------------|-------|
| KEMA torque, max. | 20 Nm |
|-------------------|-------|

Approvals

UL Recognized

| | |
|---|--------------|
| UL approval | UL 1059 |
| UL Usegroup B: rated voltage | 600 V |
| UL Usegroup B: rated current | 228 A |
| UL Usegroup C: rated voltage | 600 V |
| UL Usegroup C: rated current | 228 A |
| UL Usegroup D: rated voltage | 600 V |
| UL Usegroup D: rated current | 228 A |
| UL Usegroup E: rated voltage | 1000 V |
| UL Usegroup E: rated current | 228 A |
| UL wire cross-section single-core (rigid) AWG, min. | 4 |
| UL wire cross-section single-core (rigid) AWG, max. | 4/0 |
| UL wire cross-section stranded AWG, min. | 4 |
| UL wire cross-section stranded AWG, max. | 4/0 |
| UL torque, min. | 106.2 Lb In. |
| UL torque, max. | 177 Lb In. |
| UL wire material | Cu |
| UL factory wiring | 1 |
| UL field wiring | 1 |
| UL Recognized | 1 |

Media



Accessories

Cover

Cover, Length: 70.2 mm, Width: 26.5 mm, Colour: White



| Article number | Article name | GTIN (EAN) | Packaging unit |
|----------------|---------------|---------------|----------------|
| <u>17290.7</u> | SAD 1/27/B WH | 4044211205560 | 5 ST |

Cover, Length: 70.2 mm, Width: 26.5 mm, Colour: Yellow



| Article number | Article name | GTIN (EAN) | Packaging unit |
|----------------|---------------|---------------|----------------|
| <u>17291.8</u> | SAD 1/27/B YE | 4044211205577 | 5 ST |

Measurement pick-off terminal

Measurement pick-off terminal, Screw connection, Mounting type: On base, Rated cross-section: 10 mm², Width: 10 mm, Colour: Beige



| Article number | Article name | GTIN (EAN) | Packaging unit |
|----------------|----------------|---------------|----------------|
| <u>1125.2</u> | MAG 150/240 BG | 4044211080921 | 10 ST |

Inlay profile

Inlay plate, Colour: natural



| Article number | Article name | GTIN (EAN) | Packaging unit |
|----------------|--------------|---------------|----------------|
| <u>2275.0</u> | EP 95 | 4044211050825 | 10 ST |

Allen key socket wrench

Inner hex key with bare blade



| Article number | Article name | GTIN (EAN) | Packaging unit |
|----------------|--------------|---------------|----------------|
| <u>2772.0</u> | ISKS 6 | 4044211055028 | 1 ST |

Cross-connector

17165.2 SRK 120/2A BG



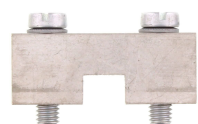
Cross-connector, No. of poles: 4, Mounting type: Can be screwed on, Width: 98 mm, Rated cross-section: 120 mm², Colour: natural

| Article number | Article name | GTIN (EAN) | Packaging unit |
|----------------|--------------|---------------|----------------|
| <u>17280.0</u> | SQ 120/4 | 4044211189488 | 10 ST |



Cross-connector, No. of poles: 3, Mounting type: Can be screwed on, Width: 71 mm, Rated cross-section: 120 mm², Colour: natural

| Article number | Article name | GTIN (EAN) | Packaging unit |
|----------------|--------------|---------------|----------------|
| <u>17279.0</u> | SQ 120/3 | 4044211189358 | 10 ST |



Cross-connector, No. of poles: 2, Mounting type: Can be screwed on, Width: 44 mm, Rated cross-section: 120 mm², Colour: natural

| Article number | Article name | GTIN (EAN) | Packaging unit |
|----------------|--------------|---------------|----------------|
| <u>17278.0</u> | SQ 120/2 | 4044211189471 | 10 ST |

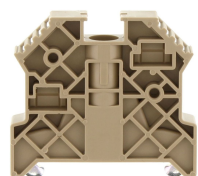
Quick marking



Terminal marker / Pocket Maxicard, Length: 5 mm, Width: 8 mm, Colour: White

| Article number | Article name | GTIN (EAN) | Packaging unit |
|----------------|----------------|---------------|----------------|
| <u>9323.7</u> | PMC SB 8/40 WH | 4044211129231 | 400 ST |

End stop



End stop, Mounting type: Mounting rail TS 35/7.5, Width: 9.5 mm, Colour: Beige

| Article number | Article name | GTIN (EAN) | Packaging unit |
|----------------|---------------|---------------|----------------|
| <u>2828.0</u> | ES 35/K/ST BG | 4044211055547 | 50 |



End stop, Mounting type: Mounting rail TS 35/7.5 and TS 35/15, Width: 8 mm, Colour: Beige

| Article number | Article name | GTIN (EAN) | Packaging unit |
|----------------|--------------|---------------|----------------|
| <u>17250.2</u> | SES 35 BG | 4044211178253 | 50 |