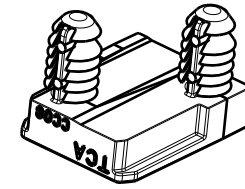
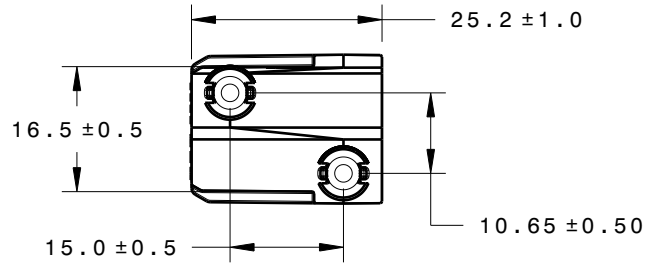


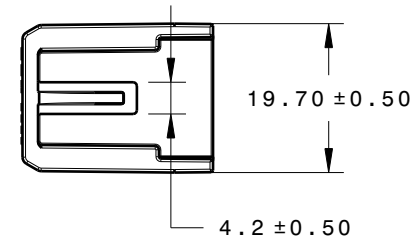
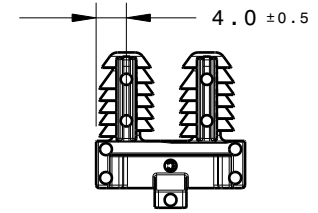
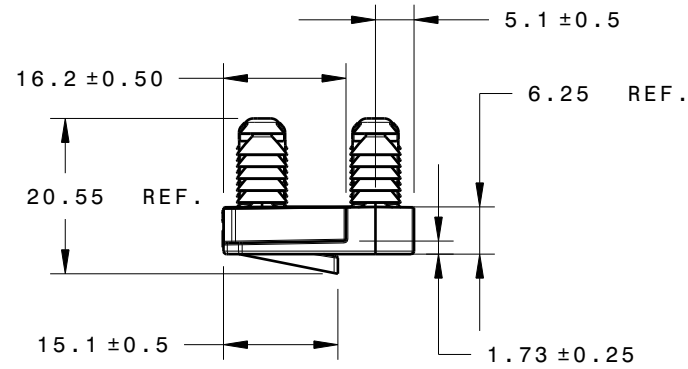
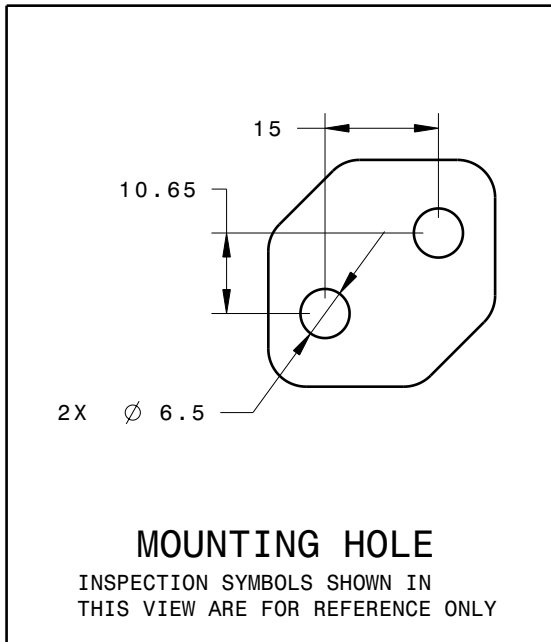
REFERENCE:

PERFORMANCE REQUIREMENTS AT DRY AS MOLDED:

1. DOUBLE FIR TREE PUSH IN FORCE: REF. 15 LBS MAX IN A 6.50mm HOLE AND A PLATE THICKNESS OF 1.8mm
2. DOUBLE FIR TREE PULL OUT FORCE: REF. 25 LBS MIN IN A 6.50mm HOLE AND A PLATE THICKNESS OF 1.8mm
3. SHEET METAL THICKNESS RANGE: 0.70mm - 5.75mm
4. HOLE DIAMETER RANGE: 6.50 +/- 0.25



Isometric view



INVENTORS

HellermannTyton[®]

ALL PROPRIETARY RIGHTS IN THE SUBJECT MATTER SHOWN ON THIS DRAWING ARE EXCLUSIVE PROPERTY OF HELLERMANNTYTON

name	date	city, state
S. ADAMS	5/12/08	MENOMONEE FALLS, WI.

REVISIONS

level	04
by	SJA
date	10/10/08
ECN #	011142
part level	C

DIMENSIONS

TOLEPRANNCES	.XXXX = ± 0.25
	.XXX = ± 0.50
	.XX = ± 1.00
	.X = ± 2.00
	∠ = ± 1.0
	unless otherwise specified
units	millimeters

PART

number	CC08	phase	PRODUCTION
name DOUBLE FIR TREE CONNECTOR CLIP (2X 6.50mm ROUND HOLE)			
material NYLON 6/6, IMPACT MODIFIED, HEAT STABILIZED COLOR: NATURAL			

DRAWING

FORMAT	AH	CAD	CATIA V5	SCALE	1:1
VERSION	J	previous drawing number			
A- SIZE (landscape)_N01					
drawn	S. ADAMS	checked	J. Passilla	approved	
	5/12/08		6/18/08		
type	CUSTOMER		sheet 1 of 1		
number	MT08-024-001CST				