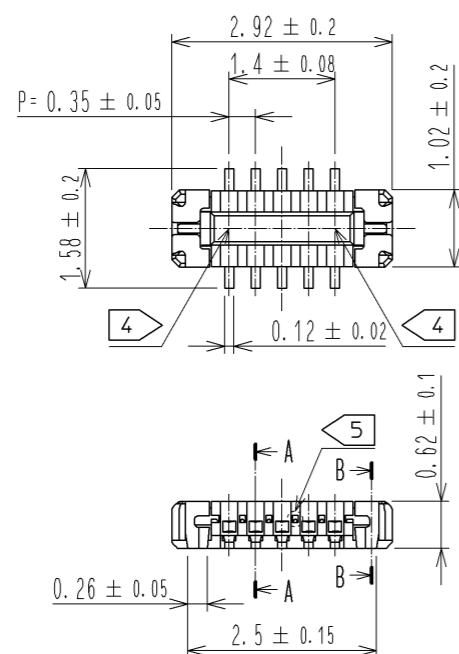
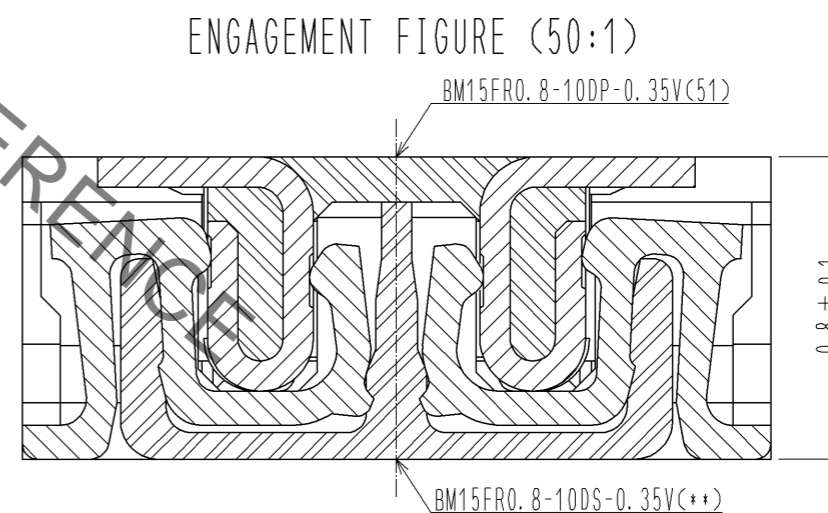
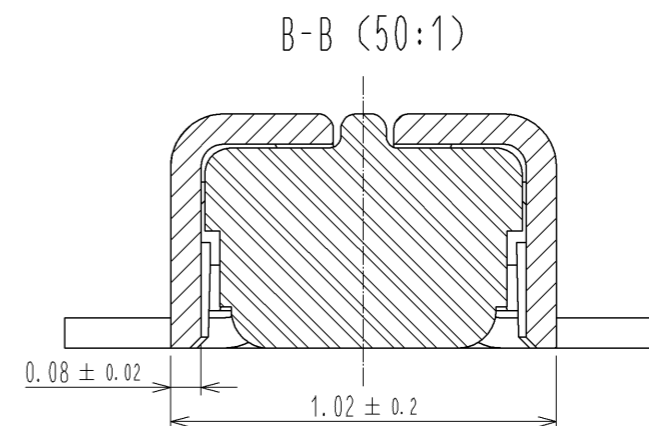
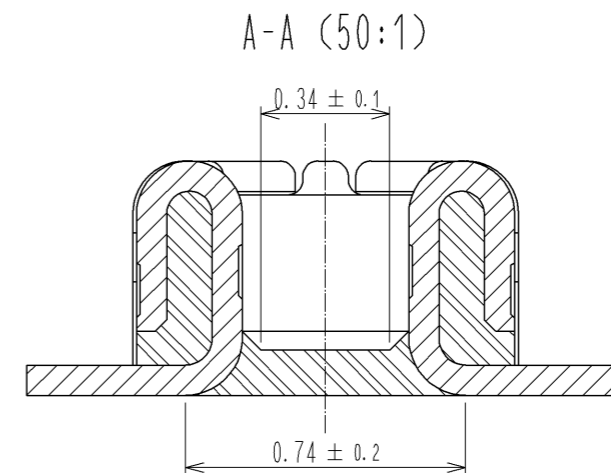


May.1.2023 Copyright 2023 HIROSE ELECTRIC CO., LTD. All Rights Reserved.  
In case of consideration for using Automotive equipment / device which demand high reliability, kindly contact our sales window correspondents.



HRS DRAWING FOR REFERENCE

- NOTE) 1 . ALL LEAD CO-PLANARITY SHALL BE 0.08mm MAX
- 2 CONTACT PLATING SPECIFICATIONS
    - CONTACT AREA : GOLD 0.05 μm MIN
    - SMT LEAD : GOLD 0.05 μm MIN
    - UNDERPLATING : NICKEL 1 μm MIN
    - ( SURFACE : SEALING )
  - 3 REINFORCED METAL FITTINGS LOCK
    - SMT LEAD : GOLD 0.05 μm MIN
    - UNDERPLATING : NICKEL 1 μm MIN
    - ( SURFACE : SEALING )
  - 4 CAV No. AND HRS MARK MYE BE INDICATED IN APPROX POSITION SHOWN.
  - 5 A PART OF THE WALL COULD BE NOTCHED.



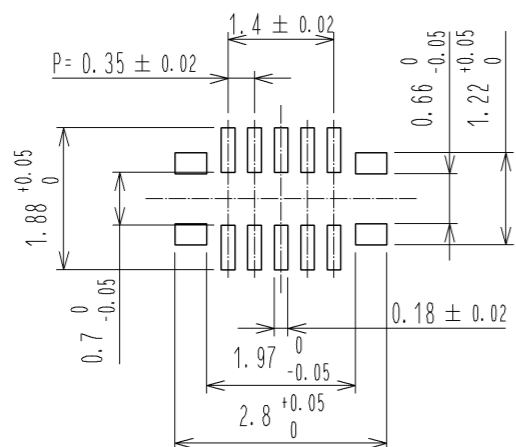
NO.	MATERIAL	FINISH .	REMARKS	NO.	MATERIAL	FINISH .	REMARKS
4	PS		CLEAR (ENBOSSED CARRIER TAPE)				
3	PHOSPHOR BRONZE	3		7	PS		CLEAR (REINFORCEMENT COLLAR)
2	PHOSPHOR BRONZE	2		6	PS		BLACK (PLASTIC REEL)
1	LCP		UL94 V-0, BLACK	5	POLYESTER		CLEAR (COVER TAPE)

UNITS	SCALE	COUNT	DESCRIPTION OF REVISIONS	DESIGNED	CHECKED	DATE
mm	10 : 1	△				
APPROVED : KH. IKEDA			13.12.13	DRAWING NO. EDC3-355886-01		
CHECKED : YH. MICHIDA			13.12.12	PART NO. BM15FR0.8-10DP-0.35V(51)		
DESIGNED : YK. KOBAYASHI			13.12.12	CODE NO. CL673-1226-8-51		
DRAWN : YK. KOBAYASHI			13.12.12	△ 1/3		

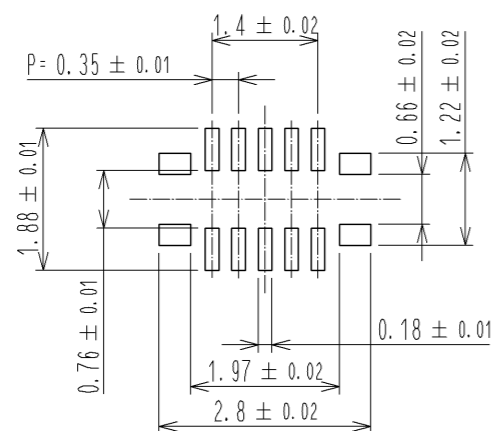
May.1.2023 Copyright 2023 HIROSE ELECTRIC CO., LTD. All Rights Reserved.  
In case of consideration for using Automotive equipment / device which demand high reliability, kindly contact our sales window correspondents.

◆ RECOMMENDED PCB LAYOUT

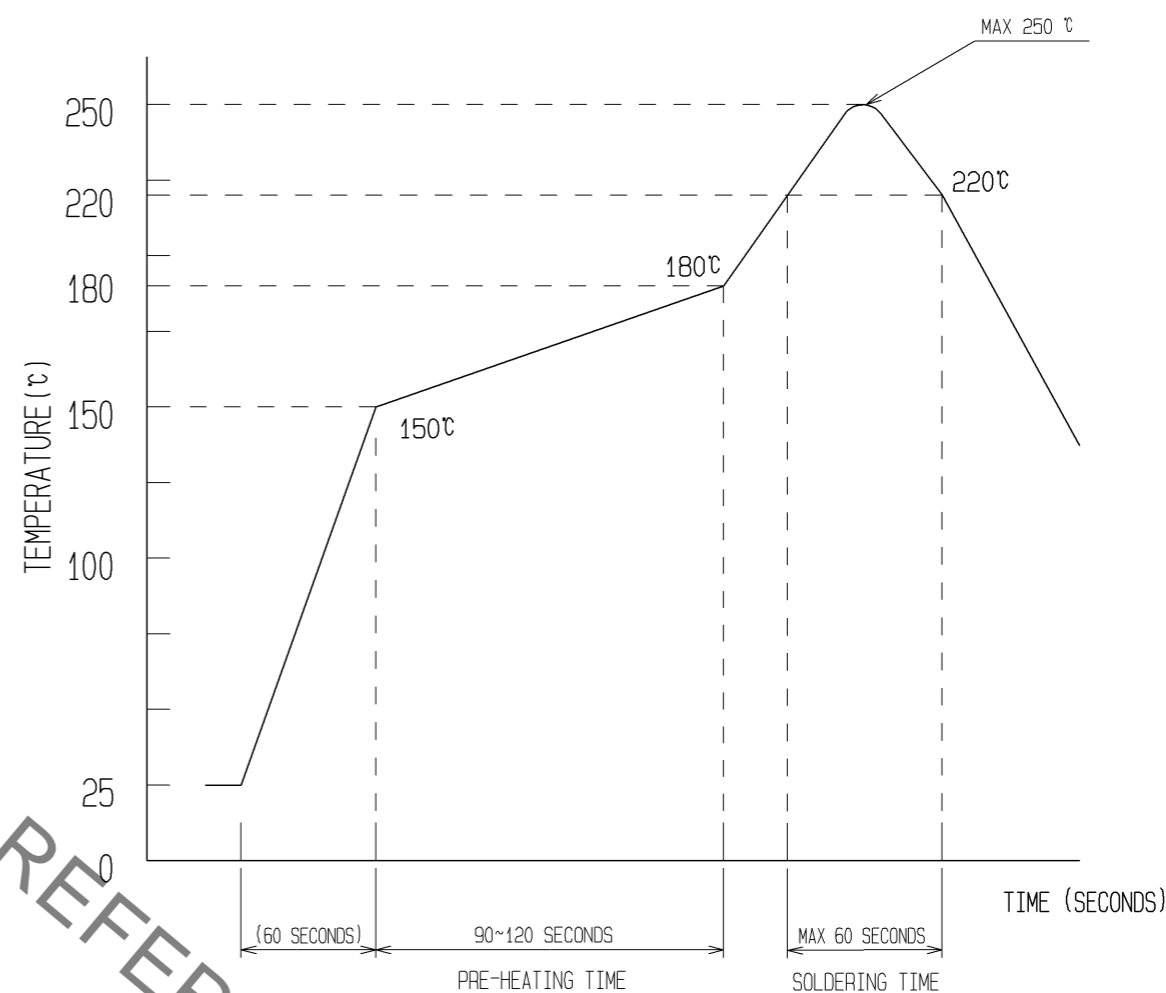


◆ RECOMMENDED METAL MASK DIMENSIONS

METAL MASK THICKNESS : 100 μm



⑥ RECOMMENDED REFLOW TEMPERATURE PROFILE USING LEAD-FREE SOLDER PASTE.



- REFLOW METHOD: IR REFLOW  
 NUMBER OF REFLOW CYCLES: 2 CYCLES MAX.  
 1) REFLOW TIME  
 DURATION ABOVE 220°C, 60 SEC. MAX.  
 (PEAK TEMPERATURE: 250°C MAX)  
 2) PRE-HEAT TIME  
 PRE-HEAT TEMPERATURE(MIN): 150°C  
 PRE-HEAT TEMPERATURE(MAX): 180°C  
 PRE-HEAT TIME: 90-120 sec.

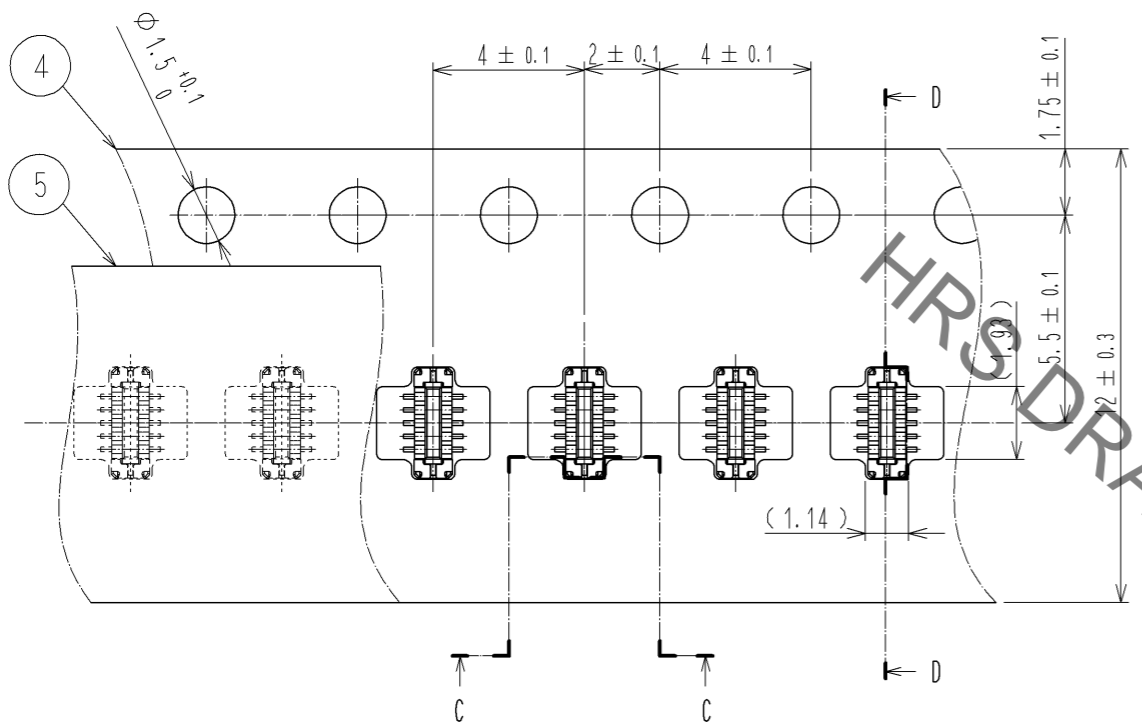
⑥ THIS TEMPERATURE PROFILE IS PER THE CONDITIONS SHOWN ABOVE.  
 ADDITIONAL FACTORS, SUCH AS SOLDER PASTE TYPE, PCB SIZE AND  
 OTHER MOUNTED COMPONENTS COULD AFFECT THE PROFILE, THEREFORE,  
 A THOROUGH EVALUATION OF MOUNTING CONDITION IS REQUIRED  
 PRIOR TO PRODUCTION. TEMPERATURE IS MEASURED AT CONTACT LEAD.

HRS DRAWING FOR REFERENCE

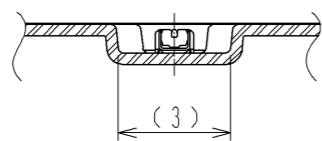
<b>HRS</b>	DRAWING NO.	EDC3-355886-01	
	PART NO.	BM15FR0.8-10DP-0.35V<51>	
	CODE NO.	CL673-1226-8-51	△ 2/3

May.1.2023 Copyright 2023 HIROSE ELECTRIC CO., LTD. All Rights Reserved.  
In case of consideration for using Automotive equipment / device which demand high reliability, kindly contact our sales window correspondents.

### EMBOSSED CARRIER TAPE PACKAGING (5:1)

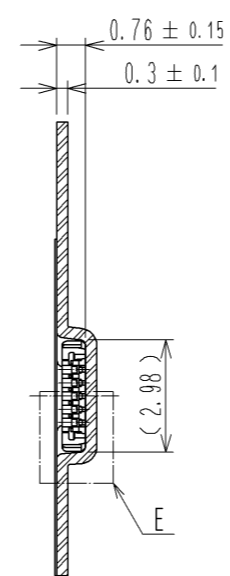


C-C (5:1)

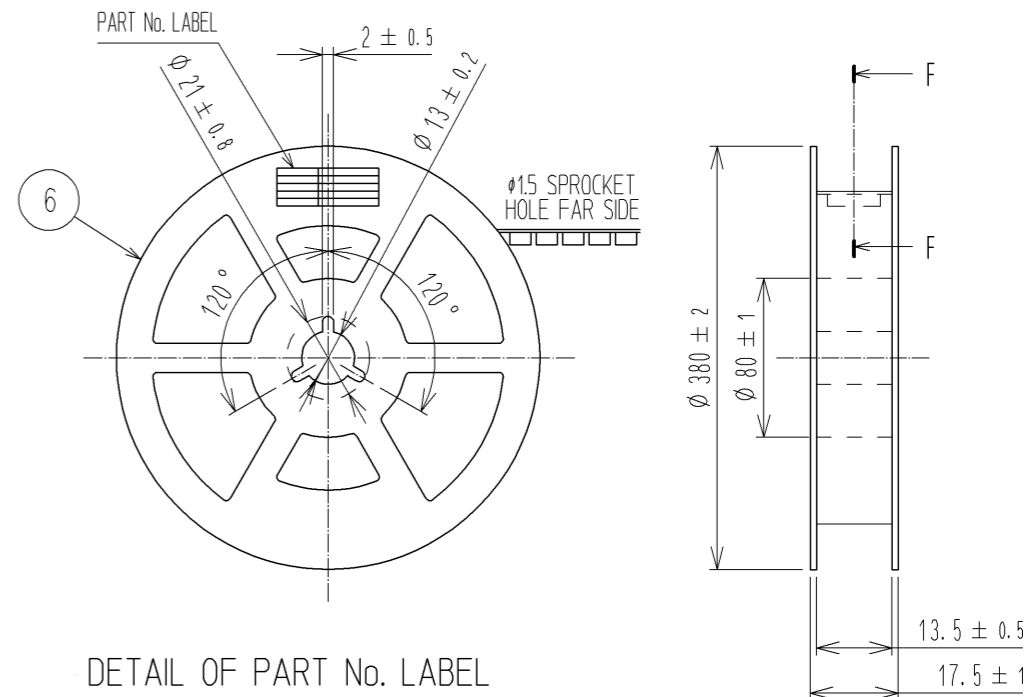


DIRECTION OF UNREELING  $\rightarrow$

D-D (5:1)



### STYLE AND DIMENTION OF REEL (FREE)

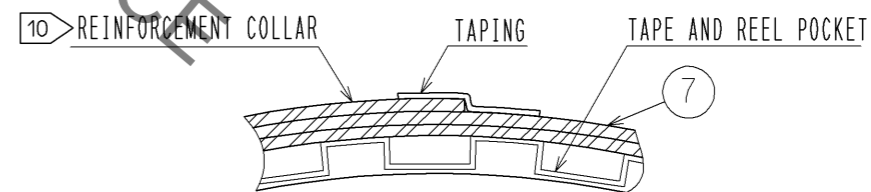


DETAIL OF PART No. LABEL

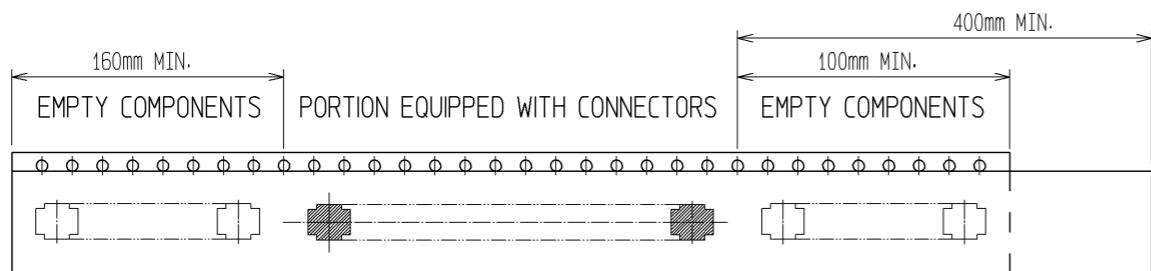
SUPPLIER  
QUANTITY  
PART No.  
CODE No.  
DATE OF MANUFACTURED

製造年月日	** ** *
製品コード	CL673-1226-8-51
製品名	BM15FR0.8-10DP-0.35V(51)
数量	15,000
納入者	ヒロセ電機(株)

F-F (FREE)

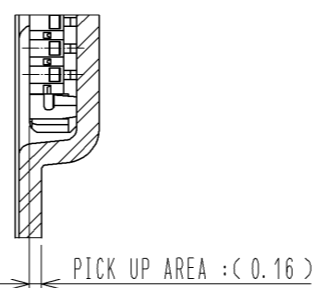


- 7. PER REEL 15000 CONNECTORS.
- 8. THE DIMENSIONS IN PARENTHESSES ARE FOR REFERENCE.
- 9. REFER TO JIS C 0806 AND IEC 60286-3 (PACKAGING OF COMPONENTS FOR AUTOMATIC HANDLING)
- 10. AFTER PACKAGING, ROLL 2 METERS OF THE REINFORCEMENT COLLAR TO OUTER CIRCUMFERENCE OF TAPE AND REEL POCKET, AND TAPE DOWN AT THE END THE COLLAR.



9 TAPING (FREE)

E(10:1)



<b>HRS</b>	DRAWING NO.	EDC3-355886-01	
	PART NO.	BM15FR0.8-10DP-0.35V(51)	
	CODE NO.	CL673-1226-8-51	$\triangle$ 3/3