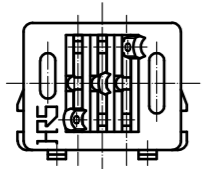
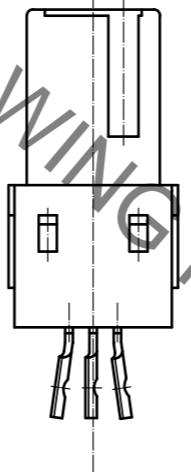
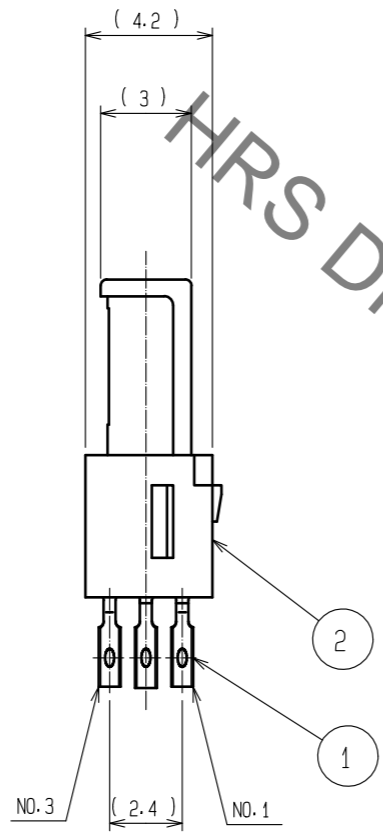
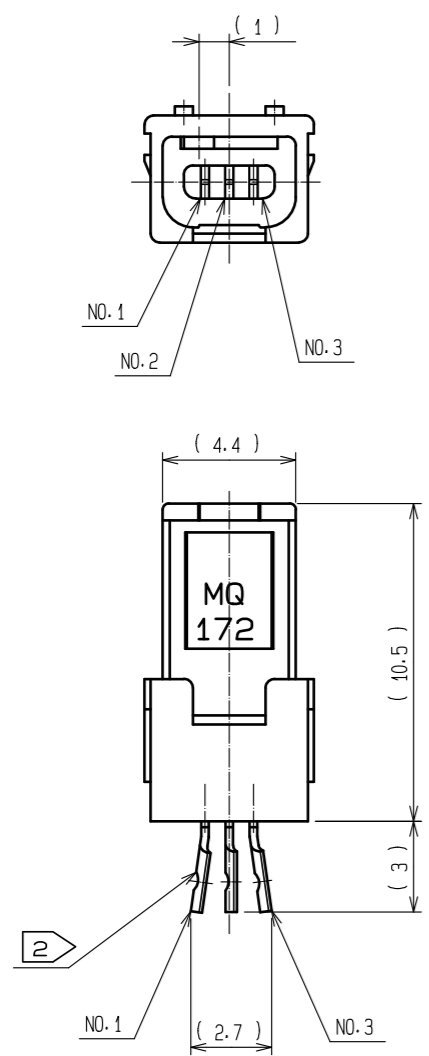


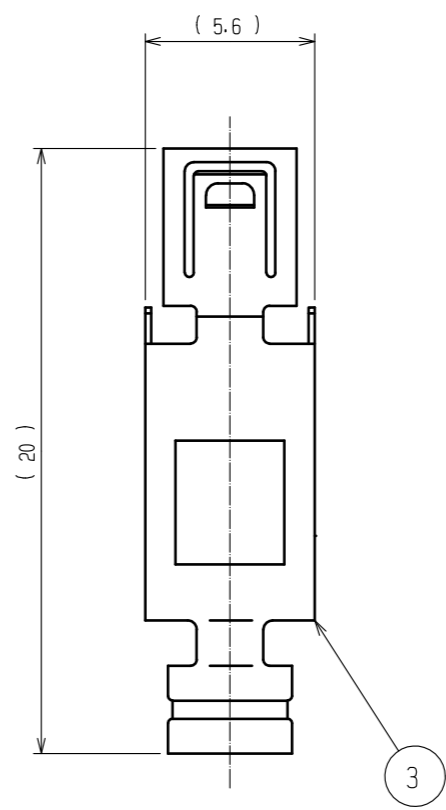
May.1.2023 Copyright 2023 HIROSE ELECTRIC CO., LTD. All Rights Reserved.
In case of consideration for using Automotive equipment / device which demand high reliability, kindly contact our sales window correspondents.



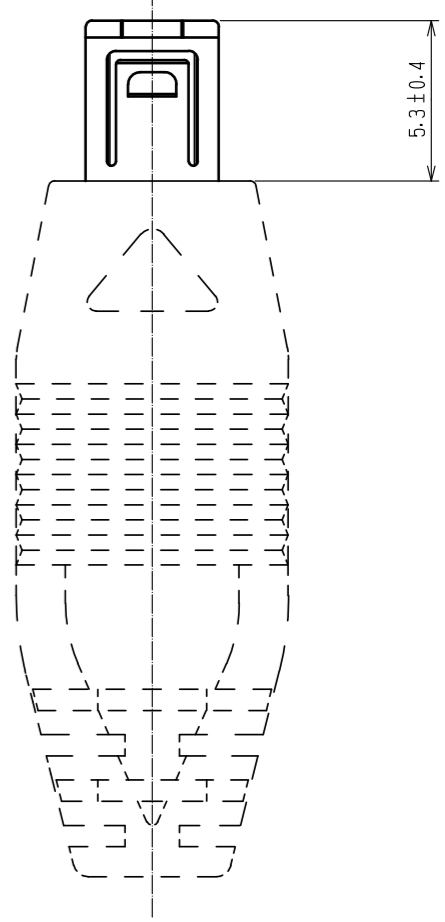
1 CHART-1 POLARIZATION

No. 1	(+)	POWER
No. 2	(+)	SIGNAL
No. 3	(-)	POWER

LOCKING CASE
(ATTACHED PART)



HOOD MATED



- NOTES
- 1 POLARIZATION IS AS SHOWN ON CHART-1.
 - 2 TERMINAL AREA SHALL BE COVERED WITH SHRINKAGE TUBE AFTER SOLDERING.
 - 3. DIRECTIONS FOR USE.
·PLEASE DO NOT USE FOR THE PURPOSE OF INTERRUPTING THE CURRENT.

1	COPPER ALLOY	CONTACT AREA : PALLADIUM-NICKEL 0.7µm MIN. + GOLD 0.2µm MIN. LEAD AREA : GOLD 0.03µm MIN. UNDER PLATING : NICKEL 1.27µm MIN.	3	STAINLESS STEEL			
			2	POLYAMIDE	BLACK UL94V-0		
NO.	MATERIAL	FINISH . REMARKS	NO.	MATERIAL	FINISH . REMARKS		
UNITS mm		SCALE 4 : 1	COUNT 	DESCRIPTION OF REVISIONS	DESIGNED	CHECKED	DATE
HRS HIROSE ELECTRIC CO., LTD.		APPROVED : NM. NISHIMATSU	15.10.27	DRAWING NO.	EDC-120678-31-00		
		CHECKED : KN. ICHIKAWA	15.10.27	PART NO.	MQ172-3SA-CV(31)		
		DESIGNED : TS. ITO	15.10.27	CODE NO.	CL206-0951-7-31		
		DRAWN : AK. AKIYAMA	15.10.27				