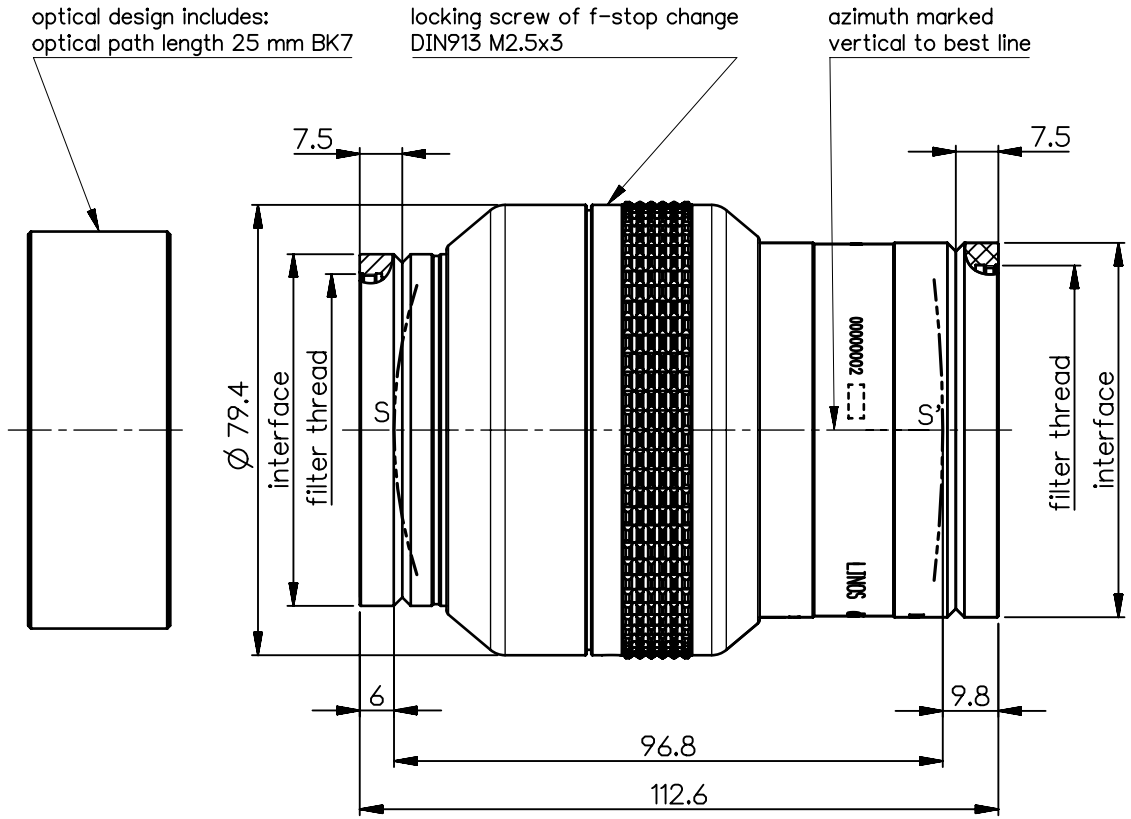


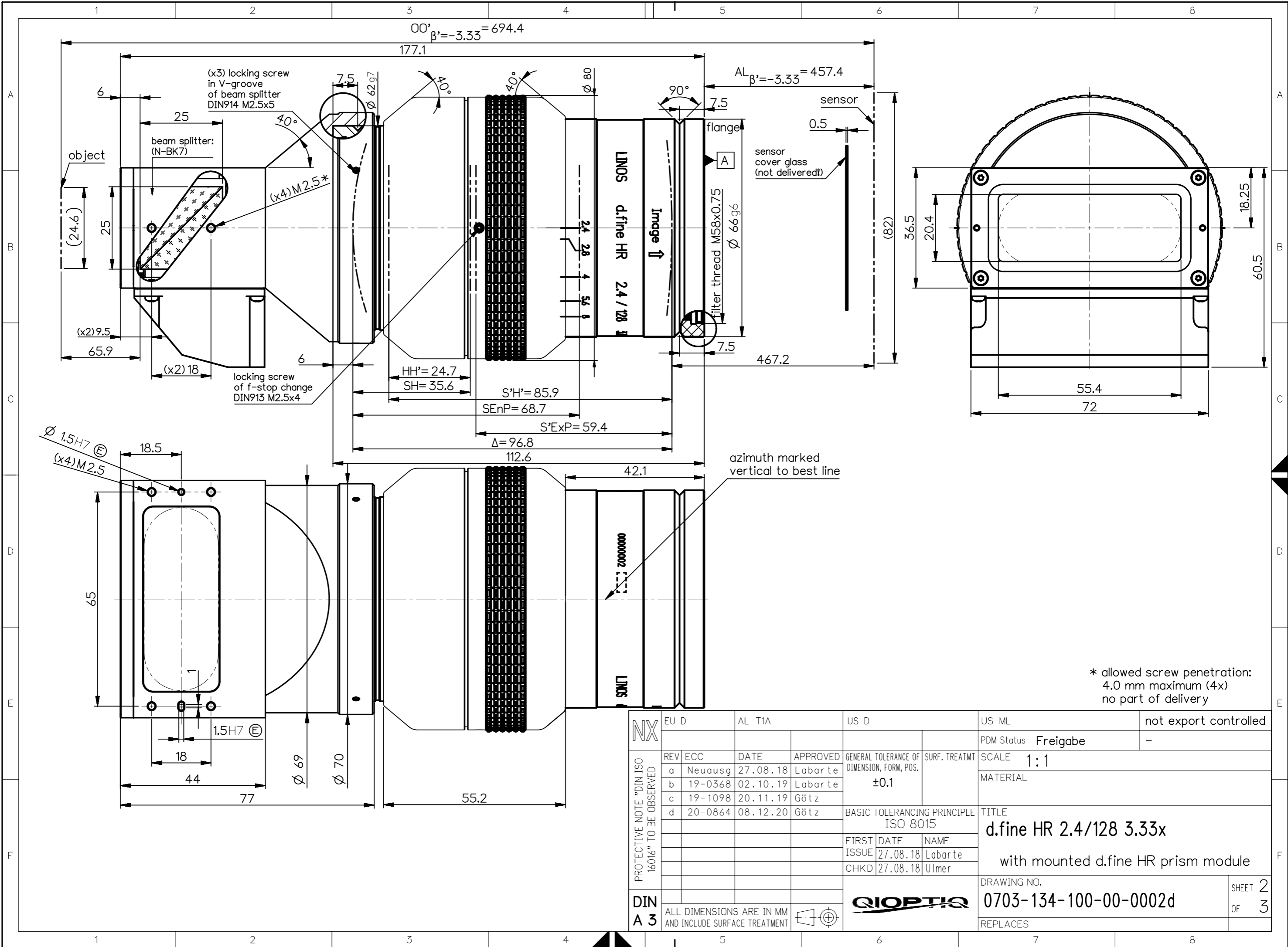
order number	lens name
0703-134-000-20	d.fine HR 2.4/128 3.33x
0703-130-823-00	d.fine HR prism module
0703-130-825-00	d.fine HR area scan module



<b>Specification</b>		ON	7608-9151
image circle max. (mm)	82	working distance (mm)	58 ... 62
focal length f' (mm)	127.7 (nom.)	interface	Ø62 g7 / Ø66 g6
magnification β' [range]	-3.33 [-3.2 ... -3.5]	filter thread	M55x0.50 / M58 x0.75
spectral range λ (nm)	400 - 750	weight (g)	1056

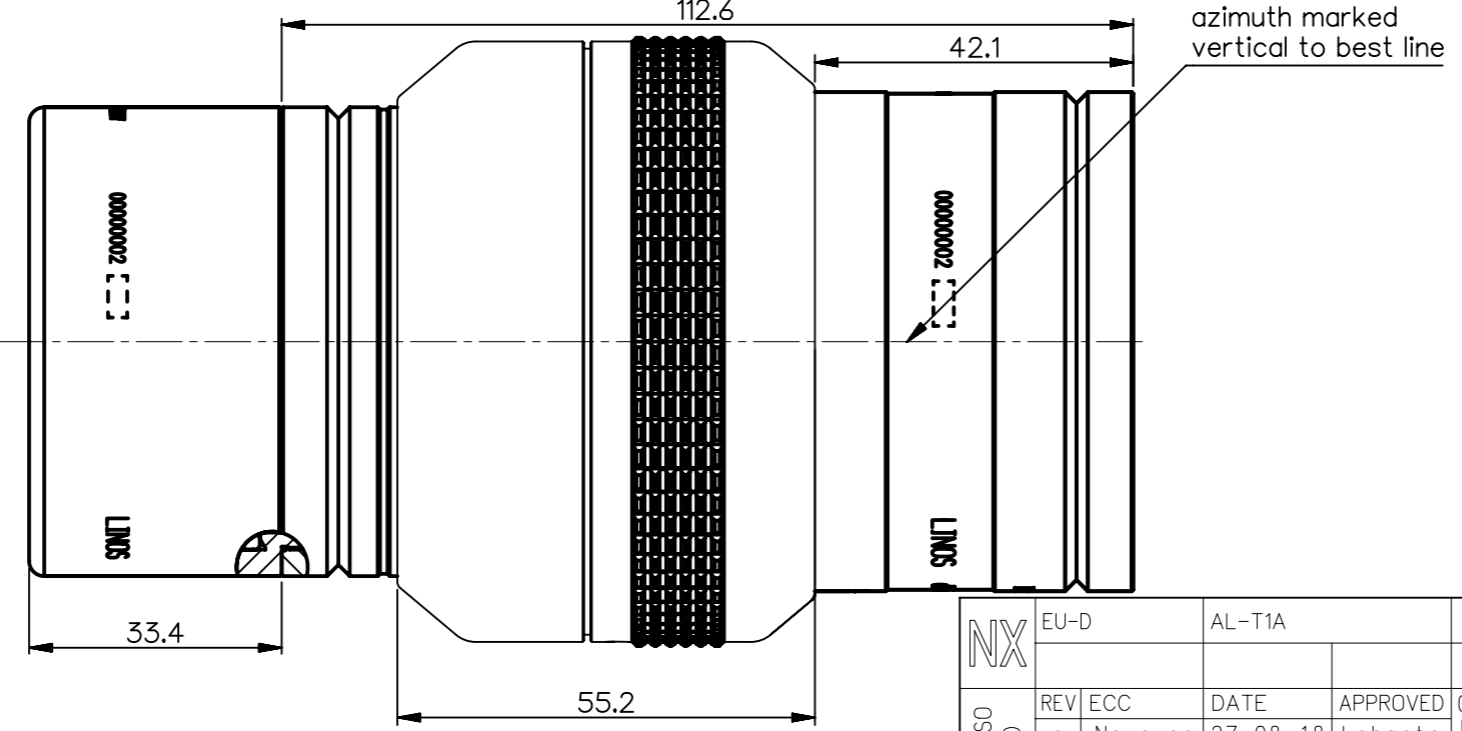
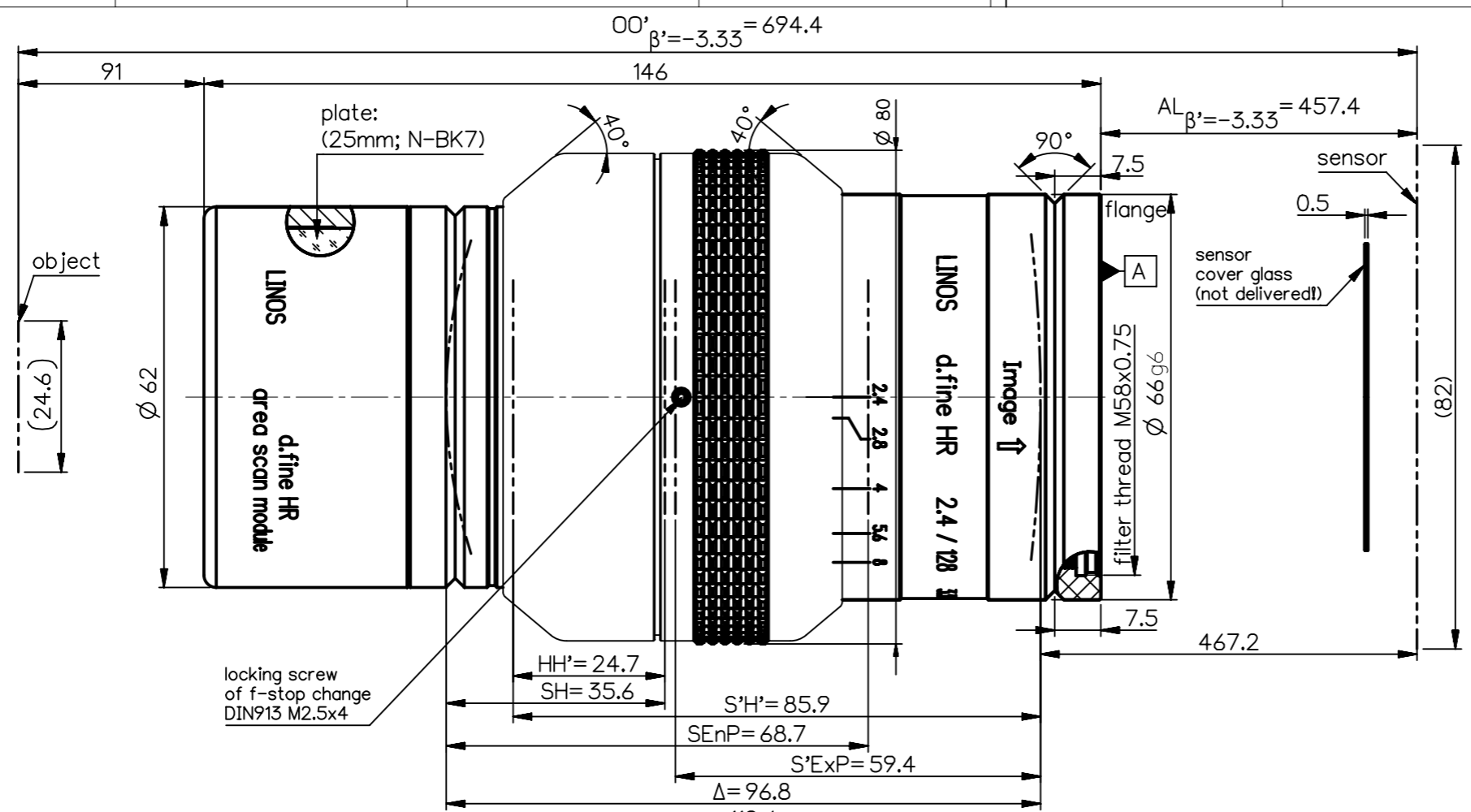
schematic diagram <span style="float: right;">*) in air</span> 		design includes CCD cover glass: yes 0.5 mm N-ZK7					
SF (mm)	-92.1	f-stop	2.4	Ø EnP	52.2	Ø Exp	41.4
S'F' (mm) *)	42.0	HH' (mm) *)	2.8	SH (mm)	30.6	S'H' (mm) *)	17.9
SEnP (mm)	68.7	S'Exp (mm) *)	-59.4				

Schutzvermerk "DIN ISO 16016" beachten	EU-D	AL-T1A	US-D	US-ML	not export controlled
	Rev.	Aenderung	Datum	Freigabe	PDM-Status Freigabe
	a	Neuaufig	18.12.19	Götz	Maßstab 3:4
	b	20-0864	19.10.20	Götz	Werkstoff
	c	19-1098	20.11.19	Götz	Benennung
d	20-0864	08.12.20	Götz	d.fine HR 2.4/128 3.33x	
				Tolerierung ISO 8015 Erster- Datum Name stellung 18.12.19 Götz Prüfung 18.12.19 Gressierer	
				Zeichnungsnummer <b>0703-134-100-00-0001d</b>	
DIN A 4	Alle Maße in mm, inklusive Oberflächenbehandlung			Blatt 1 von 1	
				Ersatz für	



\* allowed screw penetration:  
4.0 mm maximum (4x)  
no part of delivery

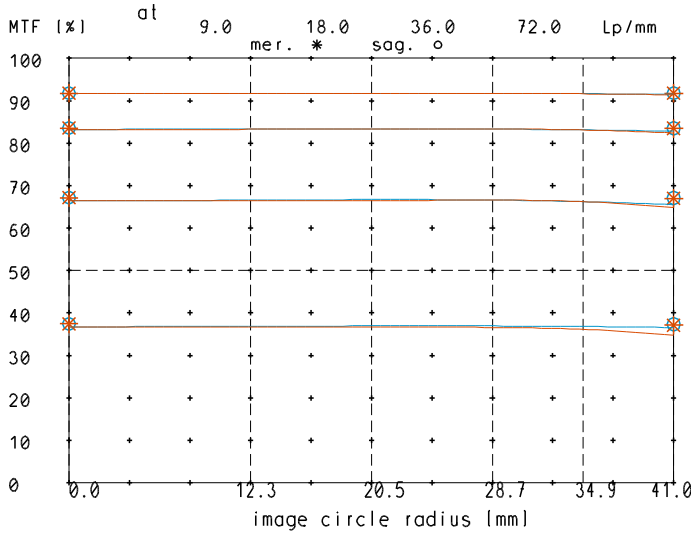
<b>NX</b> PROTECTIVE NOTE "DIN ISO 16016" TO BE OBSERVED DIN A 3	EU-D	AL-T1A	US-D	US-ML	not export controlled
	REV	ECC	DATE	APPROVED	PDM Status
	a	Neuausg	27.08.18	Labarte	Freigabe
	b	19-0368	02.10.19	Labarte	-
GENERAL TOLERANCE OF DIMENSION, FORM, POS. $\pm 0.1$				SCALE	1:1
BASIC TOLERANCING PRINCIPLE ISO 8015				MATERIAL	
FIRST ISSUE 27.08.18 Labarte				TITLE	
CHKD 27.08.18 Ulmer				<b>d.fine HR 2.4/128 3.33x</b> with mounted d.fine HR prism module	
ALL DIMENSIONS ARE IN MM AND INCLUDE SURFACE TREATMENT				DRAWING NO.	
				<b>0703-134-100-00-0002d</b>	
				REPLACES	
				SHEET 2 OF 3	



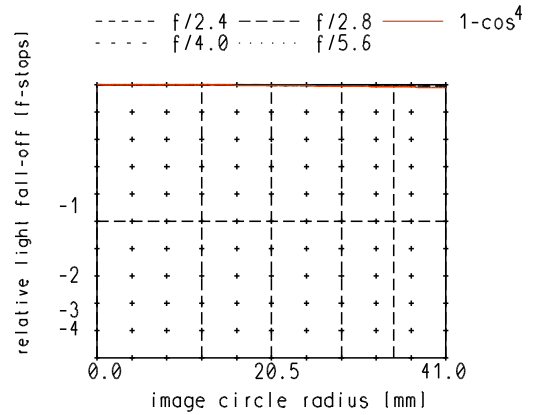
<b>NX</b> PROTECTIVE NOTE "DIN ISO 16016" TO BE OBSERVED <b>DIN A 3</b>	EU-D	AL-T1A	US-D	US-ML	not export controlled
	REV	ECC	DATE	APPROVED	GENERAL TOLERANCE OF DIMENSION, FORM, POS.
	a	Neuausg	27.08.18	Labarte	±0.1
	b	19-0368	02.10.19	Labarte	BASIC TOLERANCING PRINCIPLE ISO 8015
	c	19-1098	20.11.19	Götz	
d	20-0864	08.12.20	Götz		
			FIRST ISSUE	DATE	NAME
			27.08.18	27.08.18	Labarte
			CHKD	27.08.18	Ulmer
ALL DIMENSIONS ARE IN MM AND INCLUDE SURFACE TREATMENT					TITLE <b>d.fine HR 2.4/128 3.33x</b> with mounted d.fine HR area scan module
DRAWING NO.					SHEET 3
0703-134-100-00-0003d					OF 3
REPLACES					

# d.fine\_HR\_2.4/128\_3.33x

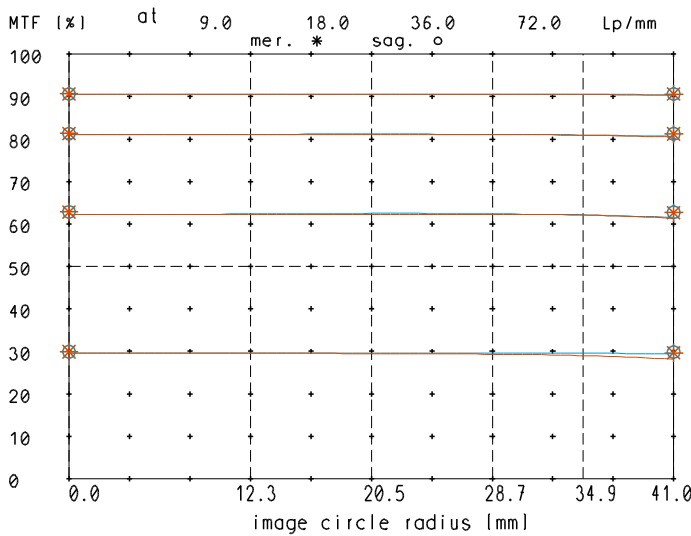
MTF at ratio 3.33 f/ 2.4



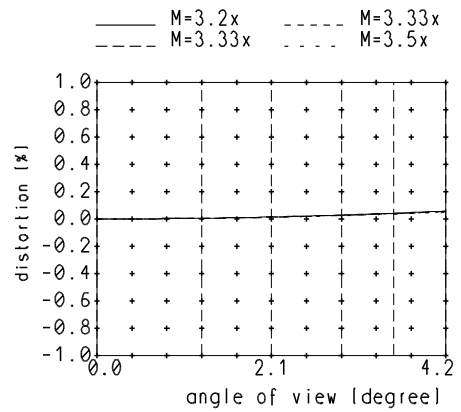
relative light fall-off at ratio 3.33



MTF at ratio 3.33 f/ 2.8

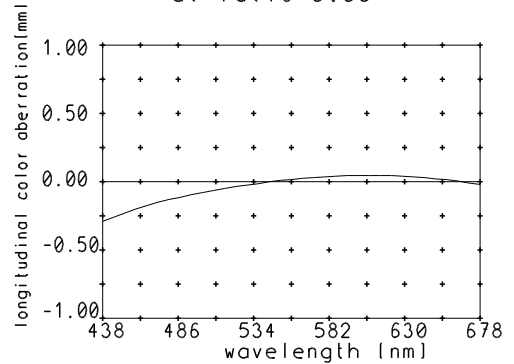


Distortion at ratio 3.2x to 3.5x



— sagittal, o Diffraction limited value  
 — meridional \* Diffraction limited value

Longitudinal color aberration at ratio 3.33



Named frequencies (line pairs/mm) in modular transfer function (MTF) as well as diagrams of relative light fall-off, distortion and longitudinal color aberration refer to film plane.