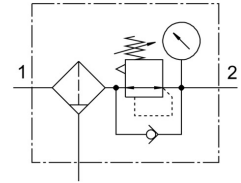


# Compressed air filter regulator MS2-LFR-QS6-D6-AR-MPA-C-M-B

Part number: 8086645

FESTO



## Data sheet

| Feature                          | Value  |
|----------------------------------|--|
| Size                             | 2  |
| Series                           | MS   |
| Actuator lock                    | Rotary knob with detent  |
| Mounting position                | Vertical +/- 5°  |
| Grade of filtration              | 5 µm   |
| Condensate drain                 | Manually rotating  |
| Structural design                | Filter regulator with pressure gauge   |
| Max. condensate volume           | 3 ml   |
| Controller function              | Outlet pressure constant<br>With secondary exhausting<br>With return flow function |
| Symbol                           | 00991589   |
| Displayable unit(s)              | MPa  |
| Pressure gauge                   | with pressure gauge  |
| Operating pressure               | 0.1 MPa ... 0.8 MPa  |
| Operating pressure               | 1 bar ... 8 bar  |
| Pressure regulation range        | 0.5 bar ... 7 bar  |
| Max. pressure hysteresis         | 0.025 MPa  |
| Max. pressure hysteresis         | 0.25 bar   |
| Max. pressure hysteresis         | 3.625 psi  |
| Standard nominal flow rate       | 310 l/min  |
| Operating medium                 | Compressed air as per ISO 8573-1:2010 [7:4:4]<br>Inert gas                         |
| Corrosion resistance class (CRC) | 1 - Low corrosion stress   |
| LABS (PWIS) conformity           | VDMA24364-B1/B2-L  |
| Storage temperature              | -5 °C ... 50 °C  |
| Air quality class at the output  | Compressed air as per ISO 8573-1:2010 [6:4:4]                                      |
| Temperature of medium            | -5 °C ... 50 °C  |
| Ambient temperature              | -5 °C ... 50 °C  |
| Product weight                   | 43.5 g   |
| Type of mounting                 | Optionally:<br>Front panel mounting<br>Line installation<br>With accessories       |
| Pneumatic connection 1           | QS-6   |
| Pneumatic connection 2           | QS-6   |
| Note on materials                | RoHS-compliant   |

| <b>Feature</b>                 | <b>Value</b>                  |
|--------------------------------|-------------------------------|
| Seals material                 | NBR                           |
| Rotary knob material           | POM                           |
| Material of spring             | High-alloy steel              |
| Compressed air filter material | PE                            |
| Housing material               | PA-reinforced                 |
| Diaphragm material             | NBR                           |
| Material of bowl               | PC                            |
| Separating disc material       | POM                           |
| Valve tappet material          | Wrought aluminum alloy<br>NBR |