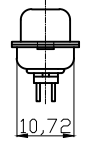
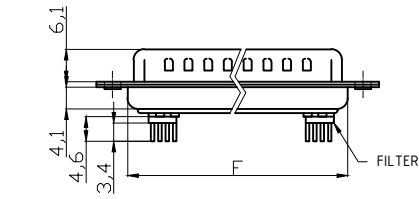
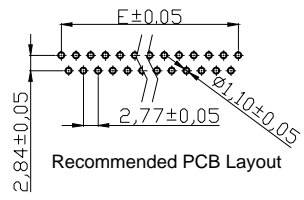
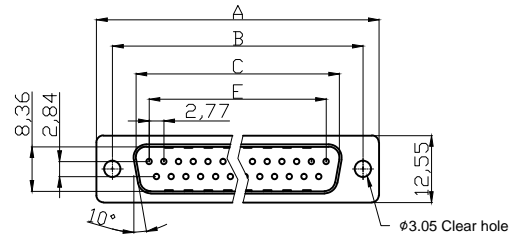


Male

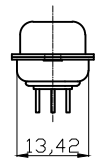
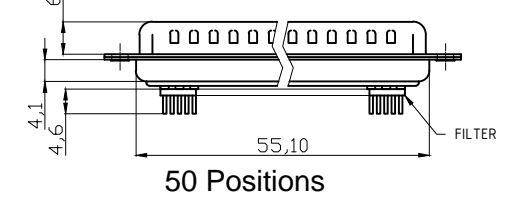
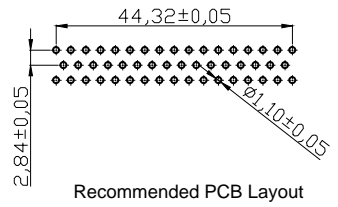
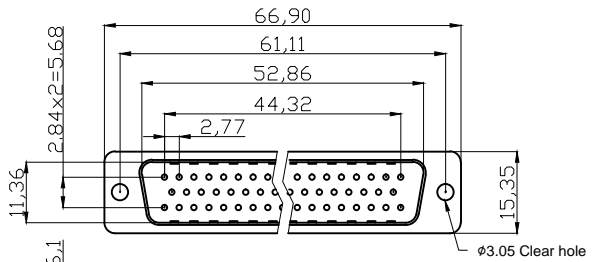
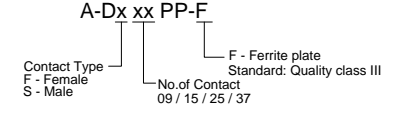


**NOTES:**

**MATERIAL**

- 1. Insulator Material: Glass-filled thermoplastic PBT, UL94V-0
  - 2. Contact Material: Copper alloy
  - 3. Shell : SPCC
- ELECTRICAL**
- 1. Current Rating : 3AMP
  - 2. Voltage Rating : 250V AC/rms 60Hz
  - 3. Contact Resistance: 20mΩ Max at 1 AMP DC
  - 4. Insulation Resistance: 1000MΩ min at 500 VDC
  - 5. Withstand Voltage: 1000V AC/rms 60Hz for 1 minute

① Operating Temperature: -55°C~ +105°C  
Order Code:



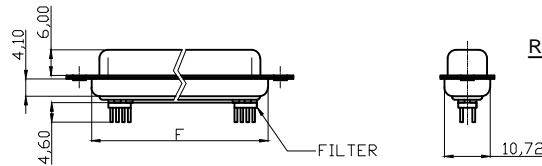
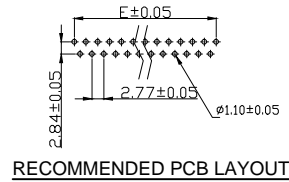
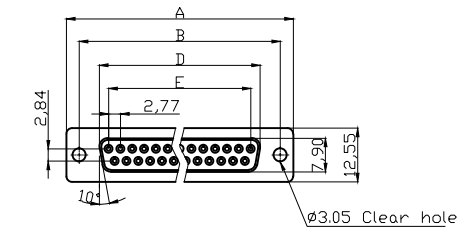
50 Positions

**Dimensions**

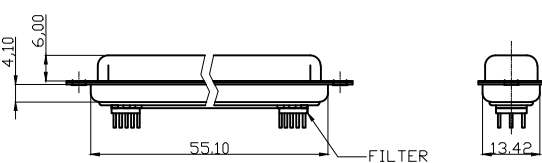
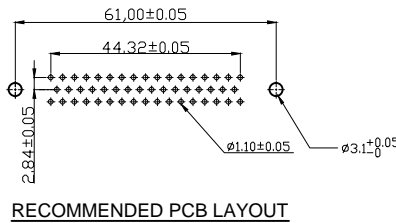
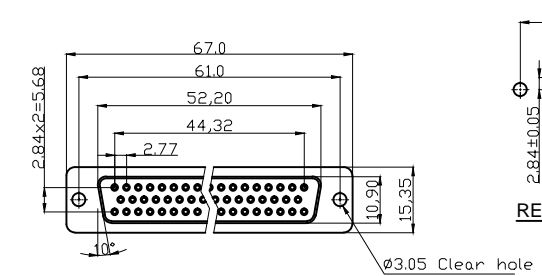
Positions	A	B	C	E	F
09	30.81	24.99	16.92	11.08	19.20
15	39.20	33.30	25.25	19.39	27.70
25	53.04	47.04	38.96	33.24	41.10
37	69.40	63.50	55.42	49.86	57.30

G	RoHS compliant Unit:mm	Scale	Free					Date	Name	Description: D-SUB Connector		
		TOLERANCE						Drawn	15.08.2012	Lucas	ASSMANN WSW-No. <b>A-Dx xx PP-F</b>	
		X.	±0.38				Approved	23.12.2020	Luca			
		X.X	±0.25									
H		X.XX	±0.13							Drawing-No.		
		DIM	TOL	①	Update operating temperature	23.12.2020	Luca			ASS 4898 CO rev01		
		X.°	±3°	②	Drawn	15.08.2012	Lucas					
		X.X°	±1.0°						Customer-No.		Sheet 1/2	
		Angle	TOL	Id.	Modification	Date	Name					

**Female**



**Product Specification**  
**Material**  
 Insulator : Glass-Filled Thermoplastic PBT,UL94V-0,Black  
 Contact : Copper alloy, Gold flash selective gold  
 Shell: SPCC  
 Clinch Nut : Brass, Nickel Plated  
 Screwlock : Brass, Nickel Plated  
**Electrical**  
 Contact Resistance : 20 milliohms Max at 1 AMP DC.  
 Insulation Resistance : 1000 megohms at 500 VDC  
 Dielectric Withstanding Voltage : 1000 VAC/rms 60Hz for 1 minute  
 Current Rating : 3 AMP  
 Voltage Rating : 250 VAC/rms 60Hz  
 ① OPERATING TEMPERATURE:-55°C+105°C



**50 POSITIONS**

**DIMENSION TABLE**

POSITIONS	A±0.15	B±0.10	D±0.13	E±0.08	F±0.10
9	30.81	24.99	16.33	11.08	19.20
15	39.14	33.32	24.66	19.39	27.70
25	53.04	47.04	38.38	33.24	41.10
37	69.32	63.50	54.84	49.86	57.30

**RoHS compliant**

Unit: mm



File No.: E198287

Scale	Free
TOLERANCE	
X.	±0.38
X.X	±0.25
X.XX	±0.13
DIM	TOL
X.°	±3°
X.X°	±1.0°
Angle	TOL

				Date	Name	Description: D-SUB Connector
				Drawn	15.08.2012	Lucas
				Approved	23.12.2020	Luca
①	Update operating temperature	23.12.2020	Luca			
②	Drawn	15.08.2012	Lucas			
Id.	Modification	Date	Name			

ASSMANN WSW-No.		A-Dx xx PP/F	
Drawing-No.		ASS 4898 CO	rev01
Customer-No.		Sheet 2/2	