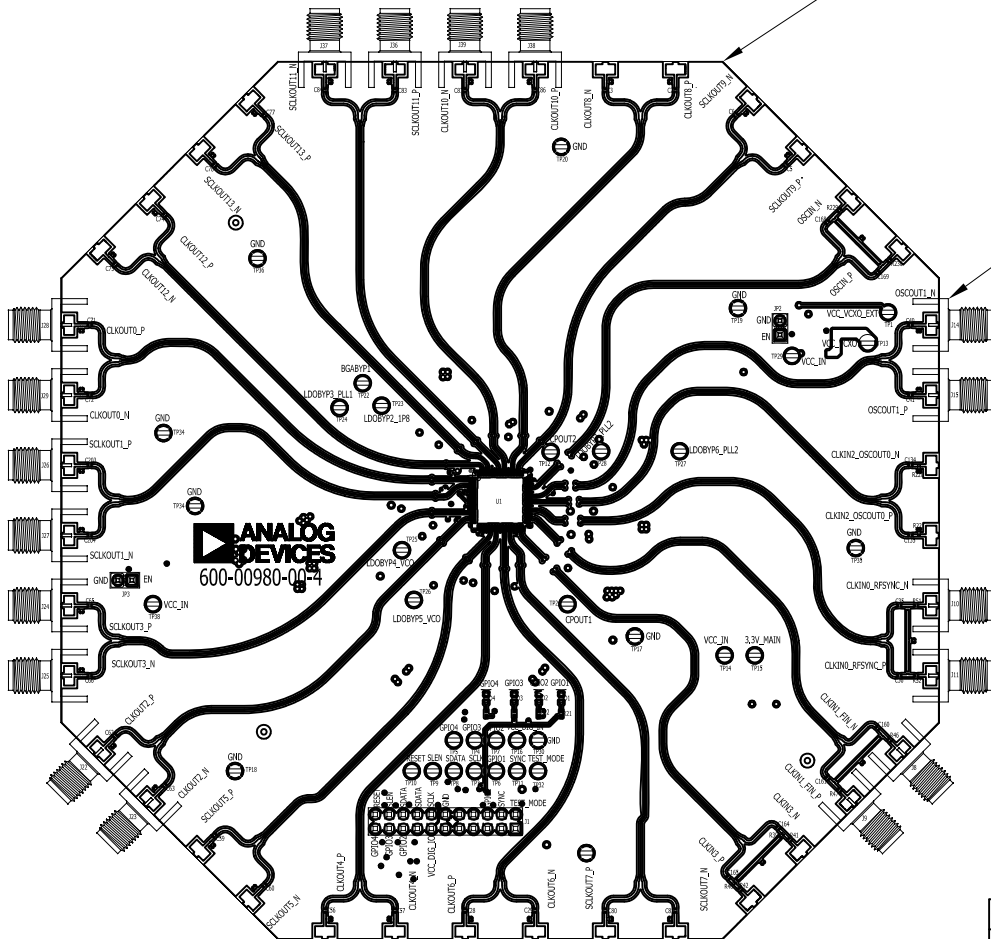


TOP VIEW



REVISION				
ZONE	LTR	DESCRIPTION	DATE	APPROVED
	A	PRODUCTION RELEASE PER CP150953	08/18/15	Y.AYDIN

NOTES:

1. SOLDER QUALITY TO IPC-A-610, CLASS 2.
2. MANUALLY DISPENSE SOLDER (ITEM 5) FOR ALL COMPONENTS.
3. J8-J11, J14-J15, J22-J29 AND J36-J39 ATTACH TO PCB WITH CENTER PIN ON TOPSIDE TRACE. MANUALLY DISPENSE SOLDER (ITEM 5) TO CENTER PIN AND GROUND LEADS, TOP AND BOTTOM. AFTER REFLOW, SOLDER MUST JOIN CONNECTOR AND PCB EDGE.
4. TRIM EDGE PLATING WITH TOOL 106356 (ITEM 54).



CAUTION!: THIS ASSEMBLY CONTAINS DEVICES THAT ARE CLASS 1A SENSITIVE TO ELECTROSTATIC DISCHARGE AND EXTREME CARE MUST BE EXERCISED. HANDLING SHALL BE PER ANSI/ESD S20.20

UNLESS OTHERWISE SPECIFIED: DIMENSIONS ARE IN INCHES [mm]	DRAWN BY Y.AYDIN	DATE DRN 08/05/15	PROPRIETARY TO ANALOG DEVICES, INC. ANALOG DEVICES 2 Elizabeth Drive Chelmsford, MA 01824 978-250-3343 Fax: 978-250-3373		
	DRAWING PRACTICES PER ASME Y14.100		CHECKED BY	TITLE AD, EVAL03	
INTERPRET DIMENSIONS & TOLERANCES PER ASME Y14.5-2009		ENGINEER A.OZ	SIZE B		
TOLERANCES: .XX ± .01 .XXX ± .005 .XXXX ± .0020 ANGLES ± .5 DEG.		THIRD ANGLE PROJECTION 	CODE ID NO. 1CN88	DWG NO. 115-01478-00	REV A
NEXT ASSY	USED ON	DO NOT SCALE DRAWING	SCALE NTS	WT	SHEET 1 OF 2

4

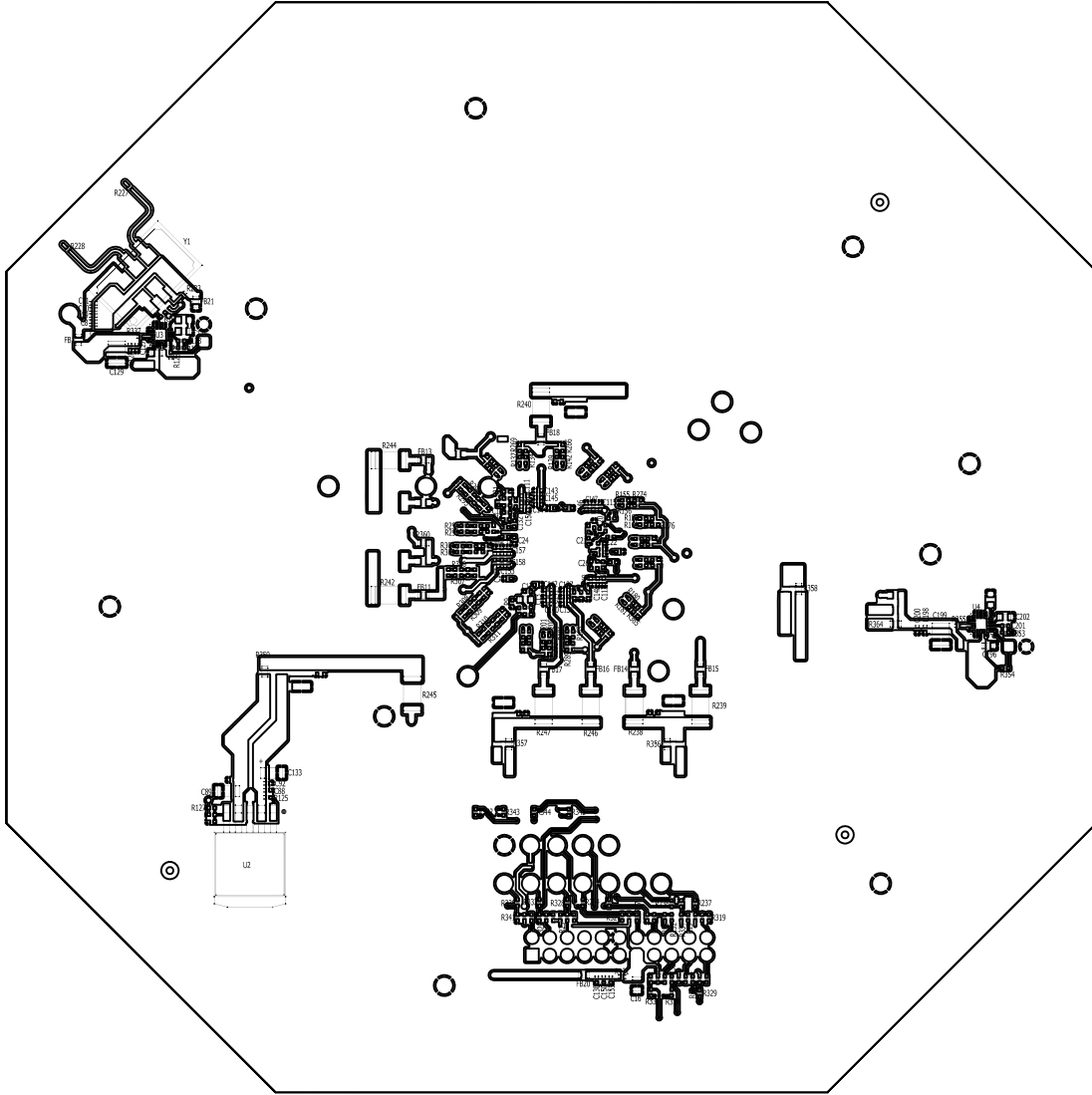
3

2

1

BOTTOM VIEW

ZONE		LTR		REVISION		DATE	APPROVED
				DESCRIPTION			
				SEE SHEET 1			



5. ALL COMPONENTS OF THIS SHEET INSTALL ON BOTTOM SIDE

PROPRIETARY TO ANALOG DEVICES, INC.



2 Elizabeth Drive
Chelmsford, MA 01824
978-250-3343
Fax: 978-250-3373

SIZE	CODE ID NO.	DWG NO.	REV
B	1CN88	115-01478-00	A
SCALE	NTS	WT	SHEET
			2 OF 2

4

3

2

1