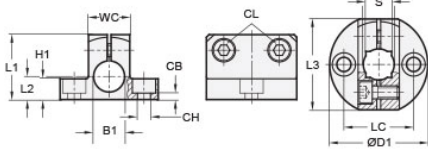




MT15/15-CB2W-A


Ruland Two-Way Base Connector, Thru Hole 15mm, Base Diameter 45mm, Aluminum



Description

Ruland MT15/15-CB2W-A is a two-way base connector with a 45mm base diameter, 15mm round thru holes, a 12mm square thru hole, M6 clamp screws, and an overall length of 30mm. It is designed to fit with Ruland tubes that begin with MT15. MT15/15-CB2W-A is aluminum and screws are 304 stainless steel for use in most industrial applications. This two-way base connector is typically used as a base in support structures for mounting sensors, screens, reflectors, plexiglass machine guards, and other industrial components. It can be permanently installed on extruded aluminum frames, sheet metal, and other surfaces using M6 hardware or the user can opt for portability by using MAGNET-57-32 magnetic base. MT15/15-CB2W-A can have MT15 round and square tubes installed vertically and/or horizontally giving system designers a high degree of flexibility to customize the base to the needs of applications throughout the equipment. MT15:16:20-ALK-M6-25 adjustable clamping handles can be used in place of standard hardware if rapid fine repositioning of the tube is required. MT15/15-CB2W-A is manufactured by Otto Ganter, inventoried by Ruland, and RoHS3 compliant.

Product Specifications

Thru Hole 1 Diameter B1	15 mm	Thru Hole 2 Diameter B2	15 mm
Thru Hole Tolerance	+0.11/-0 mm	Thru Hole 2 Tolerance	+0.11/-0 mm
Clamp Width WC	20 mm	Clamp Length L3	41 mm
Base Diameter D1	45 mm	Square Thru Hole S	12 mm
Overall Height H1	30 mm	Center To Center LC	32 mm
Edge To Center L2	10 mm	Counterbore Hole CH	M6
Counterbore to Base CB	4 mm	Clamp Screw CL	M6
Weight (lbs)	0.125700	Material Specification	Aluminum
Manufacturer	JW Winco/ Otto Ganter	UPC	634529232170
Country of Origin	Germany	Tariff Code	7609.00.0000
UNSPC	31162908		
Note 1	Performance ratings are for guidance only. The user must determine suitability for a particular application.		
Prop 65	 WARNING This product can expose you to the chemical Nickel (metallic), known to the State of California to cause cancer. For more information go to www.P65Warnings.ca.gov .		