



## 2.75W Compact Fixed Blade Charger with DC Cord – Europe Version



### Features

- Fixed Blade AC Input
- CoC Tier 2 Efficiency
- Standard Barrel Connector
- Limited Power Source
- Class B EMI

### Applications

- MPEG Players
- PDAs
- Personal Electronics
- Digital Cameras

### Safety Approvals

- CB IEC62368-1
- CE

### Mechanical Characteristics

- Length: 58mm (2.28in)
- Width: 38.0mm (1.50in)
- Height: 21.0mm (0.83in)
- Weight: 48g (1.69oz)

### Output Specifications

| Model                     | DC Output Voltage | Load |        | Ripple <sup>1</sup><br>P-P (max) | Regulation |      |
|---------------------------|-------------------|------|--------|----------------------------------|------------|------|
|                           |                   | Min. | Max.   |                                  | Line       | Load |
| AA03E-050A-R              | 5V                | 0A   | 0.55A  | 150mV                            | ±5%        |      |
| AA03E-075A-R <sup>2</sup> | 7.5V              | 0A   | 0.366A | 150mV                            | ±5%        |      |
| AA03E-090A-R              | 9V                | 0A   | 0.306A | 150mV                            | ±5%        |      |
| AA03E-120A-R              | 12V               | 0A   | 0.229A | 200mV                            | ±5%        |      |

Notes:

1. Measurements shall be made with an oscilloscope with 20MHz (or over) Bandwidth. Outputs should be bypassed at a connector with a 0.1uF ceramic capacitor and a 22uF electrolytic capacitor.
2. Special order MOQ

**INPUT:**

**AC Input Voltage Rating**  
100 to 240VAC

**AC Input Voltage Range**  
90 to 264VAC

**AC Input Current**  
100mA (RMS) max.

**Leakage Current**  
0.25mA maximum

**No-Load Power Saving**  
<75mW @115VAC/230VAC, after burn in  
15min

**OUTPUT:**

**Power**  
2.75W Maximum

**Efficiency<sup>2</sup>**  
CoC Tier 2

**ENVIRONMENTAL:****Temperature**

|               |              |
|---------------|--------------|
| Operation     | 0 to +40°C   |
| Non-operation | -25 to +75°C |
| Humidity      | 10 to 90%    |

**Immunity**

|           |                      |
|-----------|----------------------|
| ESD:      | EN61000-4-2. Level 4 |
| Surge:    | EN61000-4-5. Level 4 |
| Harmonic: | EN61000-3-2          |
| Flicker:  | EN61000-3-3          |

**EMI**

Complies with FCC Class B  
Complies with EN55032 Class B

**Dielectric Withstand (Hi-pot) Test**

Primary to Secondary: 3000VAC, 10mA for 60s

**Insulation Resistance**

Primary to Secondary: >7m OHM 500vdc

**FEATURES****Over-voltage Protection**

5V model – 7.5V max  
7.5V models – 10V max  
9V model – 12V max  
12V model – 18V max

**Short-circuit Protection**

The output can be shorted without damage.

**DC Cord**

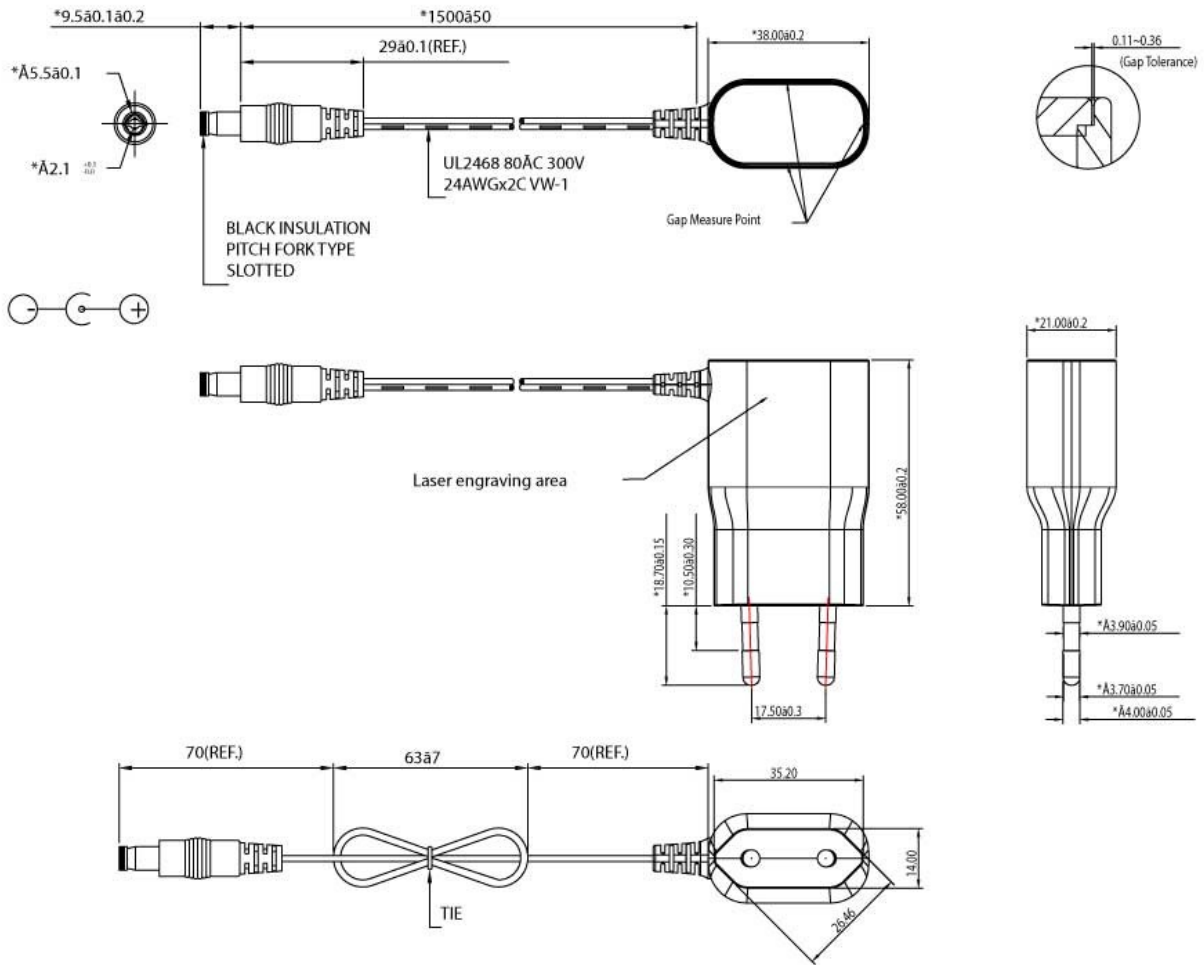
1500mm

**DC Output Connector**

5.5mm x 2.1mm x 9.5 center positive barrel

**Notes:**

1. The characteristics defined are at ambient temperature of 25°C unless otherwise specified
2. Efficiency is measured after 30 minutes burn-in



PREL