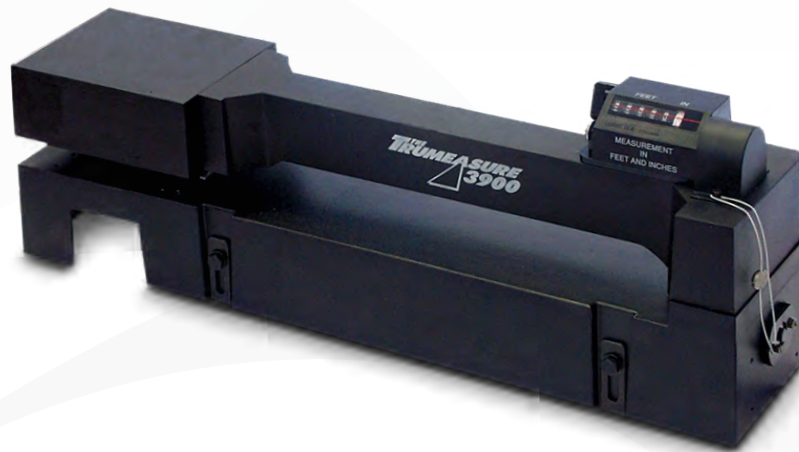


# 3900B

## Trumasure 3900 Fabric and Carpet Measurement



The Trumasure 3900B incorporates the very best features from over 60-years experience in the specialised length measurement sector. These machines incorporate exclusive new components to ensure reliability and continuing accuracy even when operating under the most demanding conditions.

Operates as the material passes between the measuring roller and the spring loaded pressure roller. The machine is activated by the movement of the material. All Trumasure machines incorporate an integral brake to prevent overspin at the end of the piece. The brake is automatically released when a further piece of material is passed between the rollers.

### Key Features

- Measures material up to 24mm (0.94in) thick
- Accommodates easily marked and/or abrasive materials (with special wheels)
- Accuracy 0.25%
- Accommodates pile up or no pile materials
- Optional encoder output
- Can be built into manufacturing and finishing processes
- Calibration certification on request at additional cost

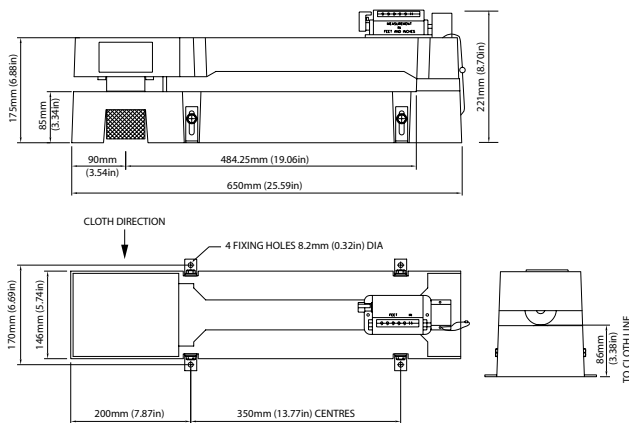
### Applications

- Manufacturing and processing of textiles, films, plastics and papers
- Fabric inspection
- Cutting to length
- Tracking of material lengths through processing

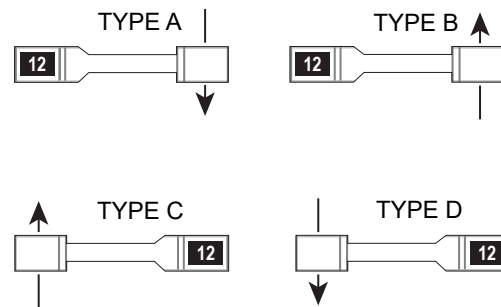
## 3900B Specifications

<b>Measuring Thickness</b>	Material up to 24mm (0.94in) thick
<b>Measuring Wheel Diameter</b>	0.25m
<b>Material types</b>	Wide range of materials including paper, plastics, tubber sheeting, vinyl, wallpaper, textiles and carpets
<b>Pile Materials</b>	Pile up, pile down, no pile
<b>Weight</b>	8kg (17.6lb)
<b>Packed Dimensions</b>	730 x 220 x 300mm (28.7x8.6x11.8in)
<b>Material Direction Options</b>	A: towards the operator; counter on left B: away from the operator; counter on left C: away from the operator; counter on right D: towards the operator; counter on right

## Dimensions



## Direction Chart



## Ordering Information

### 3900B

Fabric & Carpet Measurer Metres

**3900B TYPE A** for material travelling towards the operator; counter on his left

**3900B TYPE B** for material travelling away from the operator; counter on his left

**3900B TYPE C** for material travelling away from the operator; counter on his right

**3900B TYPE D** for material travelling towards the operator; counter on his right

### 3905-1B

Fabric & Carpet Measurer 99999'11" Feet & Inches

### 3905-2B

Fabric & Carpet Measurer 99999.7/8 Yards & Eighths

### 3905-DD250

3905 Fabric & Carpet Measurer with 250PPR Encoder Output



#### Trumeter (Europe)

Pilot Mill  
Alfred Street  
Bury,  
BL9 9JR  
Tel: +44 161 674 0960  
Email: [sales.uk@trumeter.com](mailto:sales.uk@trumeter.com)

#### Trumeter (The Americas)

6601 Lyons Rd, Suite H-7,  
Coconut Creek, Florida  
FL 33073  
USA  
Tel: +1 954 725 6699  
Email: [sales.usa@trumeter.com](mailto:sales.usa@trumeter.com)

#### Innovative Design Technologies Sdn. Bhd

Lot 5881, Lorong Iks Bukit Minyak 1  
Taman Perindustrian Iks, 14000 Bukit Tengah  
Penang, Malaysia  
Web: [www.idtworld.com](http://www.idtworld.com)  
Tel: + 604 5015700  
Email: [sales.my@idtworld.com](mailto:sales.my@idtworld.com)