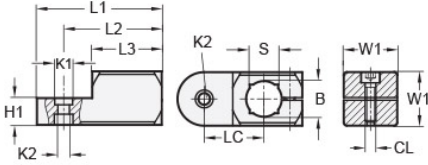
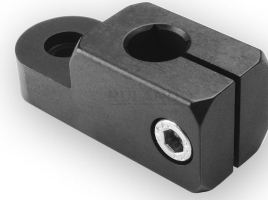




## MT16-CCSWV-25-AN

Ruland Swivel Clamp Joint, Swivel Thru Hole 6.5mm, Clamp Width 25mm, Thru Hole 16mm, Clamp Screw M6, L 62mm, Black Anodized Aluminum



### Description

Ruland MT16-CCSWV-25-AN is a swivel clamp joint with a thru hole for 16mm round tube, M6 clamp screw, 12.5mm base height, 25mm width and height, and 62mm overall length. It is designed to fit with MT15:16 swivel clamp bases, MT16 clamp connectors and mounting blocks, and MT16 round tubes. When combined with a swivel bases or attachment clamp joints, it is an ideal articulating mounting solution for screens, sensors, reflectors, plexiglass machine guards, and other components that require frequent adjustments. The vertical bore is parallel to the swivel axis. An MT15:16-SWALK-M6-25 adjustable clamping handle can be used to join it to other Ruland swivel components or tubes for rapid repositioning without the use of tools. This part is aluminum with a black anodized finish for added corrosion resistance when compared to unplated types. MT16-CCSWV-25-AN is manufactured by Otto Ganter, inventoried by Ruland, and RoHS3 compliant.

### Product Specifications

Thru Hole Diameter B	16 mm	Thru Hole Tolerance	+0.11/-0 mm
Counterbore 1 Diameter K1	10 mm	Counterbore 2 Diameter K2	6.5 mm
Clamp Screw CL	M6	Overall Length L1	62 mm
Hub Length LH	36 mm	Edge To Center Of Counterbore L2	49.5 mm
Center To Center LC	29 mm	Width & Height W1	25 mm
Base Height H1	12.5 mm	Material Specification	Anodized Aluminum
Manufacturer	JW Winco/ Otto Ganter	Country of Origin	Germany
Weight (lbs)	0.144400	UPC	634529230480
Tariff Code	7609.00.0000	UNSPC	31162908

**Note 1** Performance ratings are for guidance only. The user must determine suitability for a particular application.

**Prop 65**  **WARNING** This product can expose you to the chemical Nickel (metallic), known to the State of California to cause cancer. For more information go to [www.P65Warnings.ca.gov](http://www.P65Warnings.ca.gov).