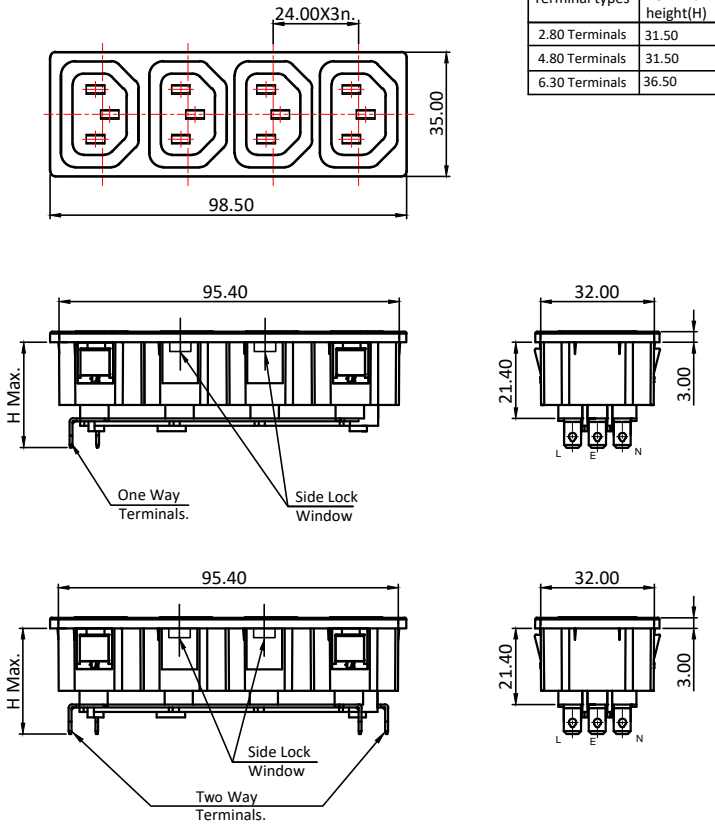


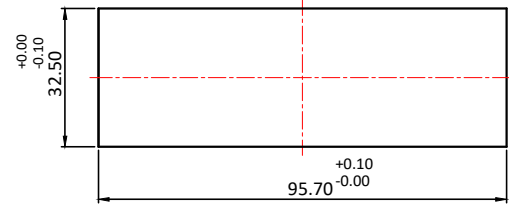
PRODUCT CODE:- **EMO-14-X (Series)**

CATEGORY:- **IEC OUTLET**

BASIC DIMENSIONS:-

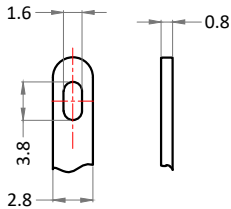


PANEL CUTOUT:-

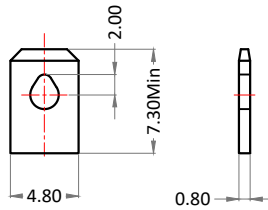


TERMINALS
(Scale:- 2:1)

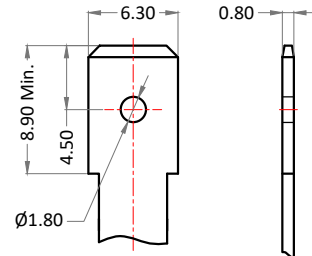
2.8x0.8 (T2)



4.8x0.8 (T4)



6.3x0.8 (T5)



APP	19.06.09	PBM	<p>Plot E-4, Kagal Five Star MIDC, Kagal, Kolhapur, MH - 416236, India</p> <p>Elcom International Pvt. Ltd.</p> <p>www.elcom-in.com</p>					
CHK								
DRN	19.06.09	UAJ						
REV	IS	WAS	DATE	SIGN	APP.	BY	DATE	SIGN
UNSP.TOLERANCE			DIMNS. IN	WT(Gm)	SCALE:-	PROJECTION	SHEET	DRAWING NUMBER
OVER	-	1	10	mm	Max.	NTS.	1 OF 2	P E M O 2 1 4 V
UP TO	1	10	-	Moulding, plating details as per Bill of Material				REVISION
±	0.2	0.3	0.5	Unspecified colour is Black, GF:Glass filled.				0










F:ENG-08.00

Note: Technical specifications are subject to change without prior notice

Copyright © 2019 by Elcom International Pvt.Ltd, India. All rights reserved


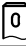

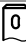

PRODUCT CODE:- EMO-14-X (Series)	CATEGORY:- IEC OUTLET
--	---------------------------------

SPECIFICATION TABLE:-


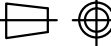
SR.NO.	PARAMETER		SPECIFICATIONS
1	V/A Rating		10A 250V AC  20A 250V AC 
2	Contact resistance (Initial)		10 m ohms max.
3	Insulation resistance at 500 V DC		1000 M ohms min.
4	H.V.Break down test (For 1minute)		2 KV AC
5	Panel thickness maximum - Other: Available on request		Standard : 1.5 Refer Ordering Table
6	Mounting		Panel, Snap-in type
7	Terminals		Solder-type / Fast-on / PCB-type
8	Withdrawal force		3.5 to 5.0 kg.
9	Permissible temp.	(a) With/Without load	0°C To 70°C  0°C To 65°C  
		(b) For Soldering	270°C for 5 Sec. max.
10	Material	(a) Body	Nylon-6, GF20%, V-2
		(b) Contacts, Terminals	Brass, Tin plating
11	Reference standards		IEC 60320-1, IEC 60320-3, UL-498, CSA : C22.2 No.182.3
12	Compliance Marking		 
13	Approvals		 

 : Also available for temp. rating up to 125°C on request (For UL only)

ORDERING CODE:-

SERIES	TERMINAL TYPE		PANEL THICKNESS		TERMINAL DETAILS			VARIETY		
EMO-14	Code	Terminal position	No Suffix	1.5		A (Capsule Hole)	B (Drop Hole)	C (Fast-on)	No Suffix	W/O lock
	No Suffix	One-way terminal	K	0.9	T2	2.8x0.80			1V2	Side Lock variety
	T	Two-way terminal	A	1.0	T4	4.8x0.80				
			B	1.2	T5	6.3x0.80				
			D	1.8						
			E	2.0						
			G	2.5						
			J	3.0						

EXAMPLE :-
1)EMO-14-T2A-1V2
2)EMO-14-T-T4B-1V2
3)EMO-14-T-T5C-1V2

APP	19.06.09	PBM		Plot E-4, Kagal Five Star MIDC, Kagal, Kolhapur, MH - 416236, India	Elcom International Pvt. Ltd.	www.elcom-in.com											
CHK																	
DRN	19.06.09	UAJ															
REV	IS	WAS	DATE	SIGN	APP.	BY	DATE	SIGN									
UNSP.TOLERANCE			DIMNS. IN	WT(Gm)	SCALE:-	PROJECTION	SHEET	DRAWING NUMBER									
OVER	-	1	10	mm	Max.	NTS.		2 OF 2	P	E	M	O	2	1	4	V	REVISION
UP TO	1	10	-	Moulding, plating details as per Bill of Material Unspecified colour is Black, GF:Glass filled.					0								
±	0.2	0.3	0.5														

F:ENG-08.00

Note: Technical specifications are subject to change without prior notice

Copyright © 2019 by Elcom International Pvt.Ltd, India. All rights reserved