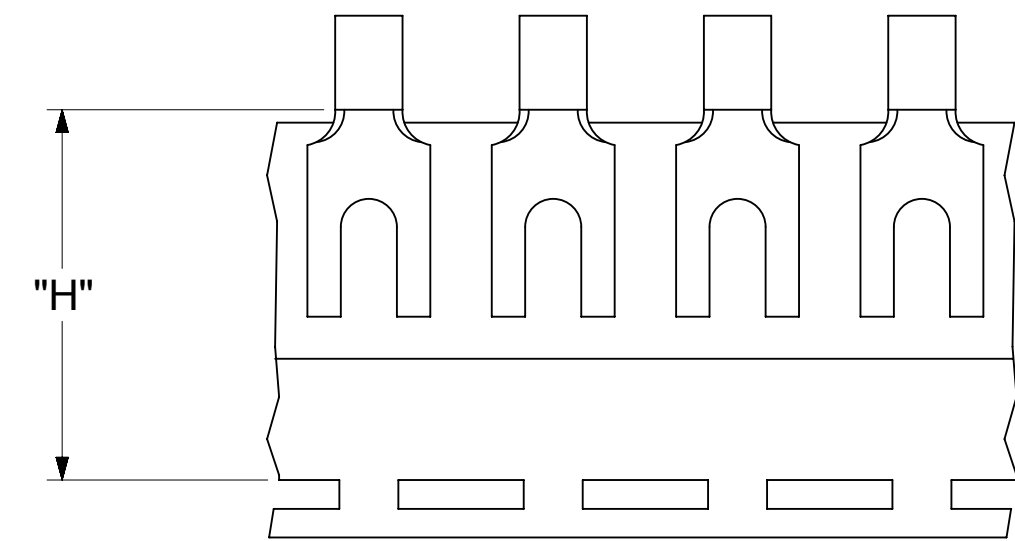
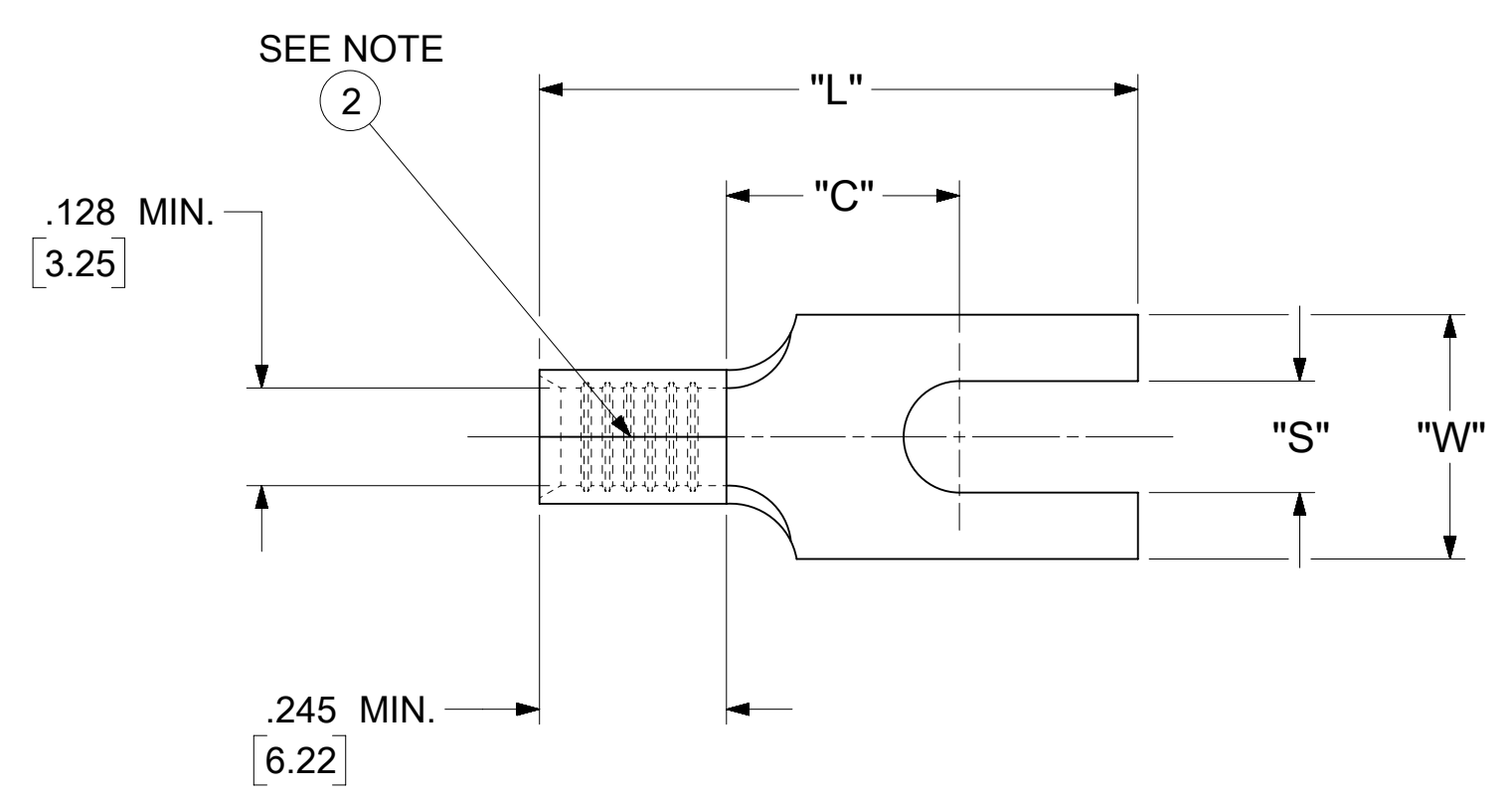


LOOSE PIECE		TAPE MOUNTED		SPECIFICATIONS					
MATERIAL NUMBER	ENGINEERING NUMBER	MATERIAL NUMBER	ENGINEERING NUMBER	STUD SIZE	"S" ±.005 [0.13]	"W" ±.010 [0.25]	"C" MIN.	"L" MAX.	"H"
---	---	---	---	8	.173 [4.39]	.415 [10.54]	.305 [7.75]	.784 [19.91]	---
191470086	C-3105-06	191470087	C-3105-06T	6	.146 [3.71]	.320 [8.13]	.305 [7.75]	.784 [191.91]	.980 [24.89]
191470088	C-3105-08	191470089	C-3105-08T	8	.173 [4.39]				
191470090	C-3105-10	---	---	10	.198 [5.03]				



PARTS ON TAPE

- NOTES:
- MATERIAL: COPPER (.040±.001 [1.02] THK.)  
PLATING: ELECTRO-TIN (.0003 MIN).
  - BRAZED SEAM
  - WIRE SIZE: 12-10 AWG  
4.0-6.0 MM<sup>2</sup>
  - "UL" LISTING #E32244  
"CSA" LISTING #18689
  - ALL DIMENSIONS IN INCHES/[MM].
  - PARTS ARE ROHS COMPLIANT.
  - DIMS. SHOWN ARE FOR REFERENCE ONLY.

SYMBOLS	THIS DRAWING CONTAINS INFORMATION THAT IS PROPRIETARY TO MOLEX ELECTRONIC TECHNOLOGIES, LLC AND SHOULD NOT BE USED WITHOUT WRITTEN PERMISSION					
	DIMENSION UNITS	SCALE		CURRENT REV DESC: MIGRATION TO ECTR/NX		
∇ = 0	INCH/MM	NTS		<b>molex</b> SPADE TONGUE TERMINAL VERSAKRIMP 300-SERIES PRODUCT CUSTOMER DRAWING		
∇ = 0	GENERAL TOLERANCES (UNLESS SPECIFIED)					
∇ = 0		MM	INCH			
∇ = 0	4 PLACES	±	±			
∇ = 0	3 PLACES	±	± 0.005	EC NO: 620268	DRWN: ABENJAMINLW	2019/07/05
∇ = 0	2 PLACES	± 0.13	± 0.01	CHK'D: DMYRICK	2019/07/08	
∇ = 0	1 PLACE	± 0.25	±	APPR: JMACNEIL	2019/07/10	
∇ = 0	0 PLACES	±	±	INITIAL REVISION:		
∇ = 0	ANGULAR TOL	± 0.5 °		DRWN: JJ	1984/11/28	
∇ = 0	DRAFT WHERE APPLICABLE MUST REMAIN WITHIN DIMENSIONS			APPR: JMACNEIL	2019/07/10	
∇ = 0	THIRD ANGLE PROJECTION		DRAWING	SERIES	DOCUMENT NUMBER	DOC TYPE   DOC PART   REVISION
	C-SIZE		19147	19147	191470083	PSD   000   A
	SEE TABLE	GENERAL MARKET		MATERIAL NUMBER	CUSTOMER	SHEET NUMBER
						1 OF 1