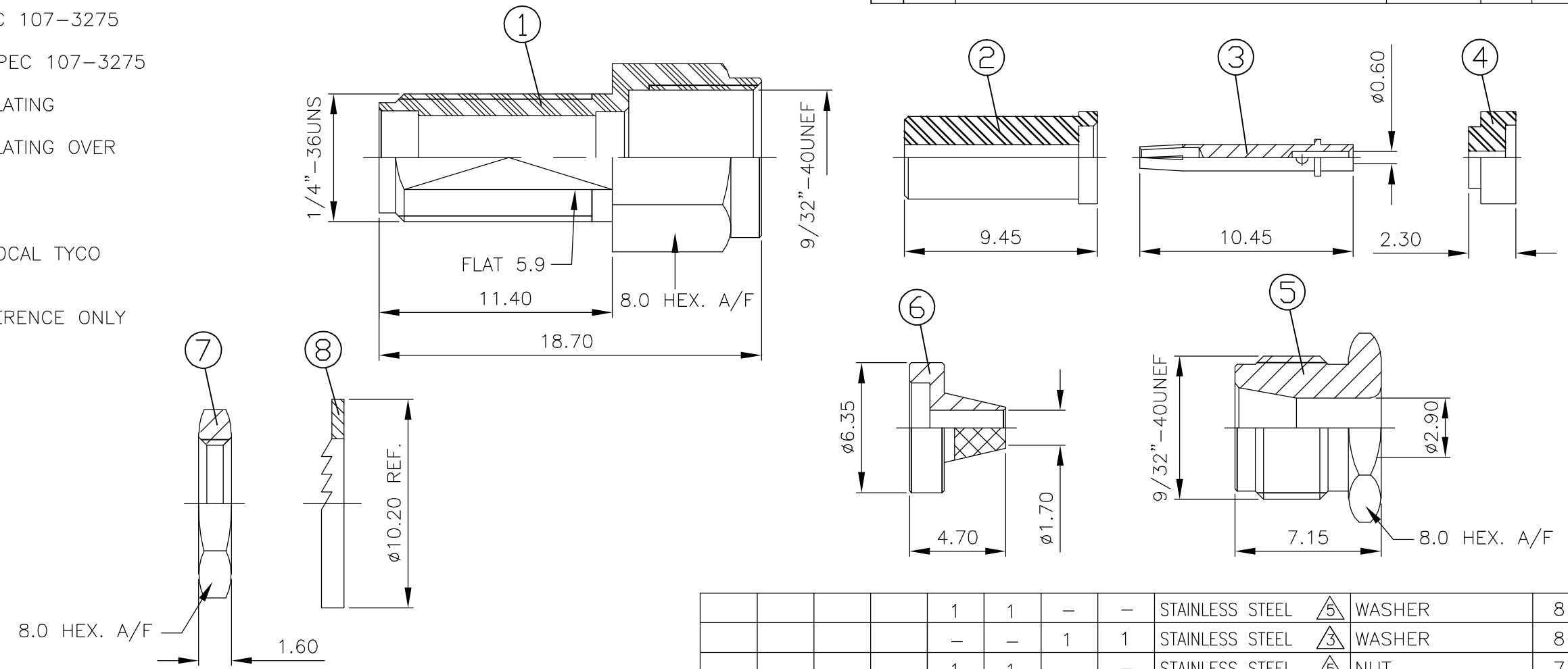


THIS DRAWING IS UNPUBLISHED. RELEASED FOR PUBLICATION APRIL, 2004.  
 © COPYRIGHT 2004 BY TYCO ELECTRONICS CORPORATION. ALL RIGHTS RESERVED.

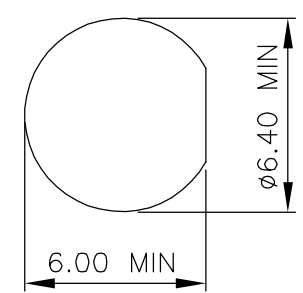
| LOC | DIST | REVISIONS |     |              |         |     |      |
|-----|------|-----------|-----|--------------|---------|-----|------|
| E   | B    | P         | LTR | DESCRIPTION  | DATE    | DWN | APVD |
|     |      | B         |     | EBD0-0189-04 | 22APR04 | RS  | FWK  |

- NOTES:
- 1 SINGLE PACK IN ACCORDANCE WITH SPEC 107-3275
  - 2 100 TRAY PACK IN ACCORDANCE WITH SPEC 107-3275
  - 3 0.08µm Au PLATING OVER 1.27µm Ni PLATING
  - 4 0.76µm Au PLATING OVER 1.27µm Ni PLATING OVER 0.76µm Cu PLATING
  - 5 PASSIVATED
  - 6 FOR TECHNICAL DATA REFER TO YOUR LOCAL TYCO ELECTRONICS SALES OFFICE
  - 7 ALL DIMENSIONS ARE NOMINAL FOR REFERENCE ONLY UNLESS OTHERWISE STATED

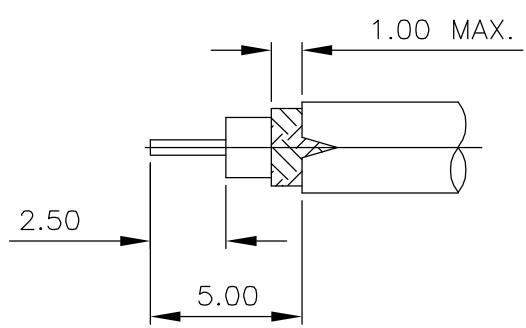


| QTY  | QTY  | QTY  | QTY  | MATERIAL         | DESCRIPTION   | ITEM |
|------|------|------|------|------------------|---------------|------|
| 1    | 1    | -    | -    | STAINLESS STEEL  | WASHER        | 8    |
| -    | -    | 1    | 1    | STAINLESS STEEL  | WASHER        | 8    |
| 1    | 1    | -    | -    | STAINLESS STEEL  | NUT           | 7    |
| -    | -    | 1    | 1    | STAINLESS STEEL  | NUT           | 7    |
| 1    | 1    | -    | -    | STAINLESS STEEL  | CLAMP         | 6    |
| -    | -    | 1    | 1    | STAINLESS STEEL  | CLAMP         | 6    |
| 1    | 1    | -    | -    | STAINLESS STEEL  | BODY          | 5    |
| -    | -    | 1    | 1    | STAINLESS STEEL  | BODY          | 5    |
| 1    | 1    | 1    | 1    | PTFE             | INSULATOR     | 4    |
| 1    | 1    | 1    | 1    | BERYLLIUM COPPER | CENTER SOCKET | 3    |
| 1    | 1    | 1    | 1    | PTFE             | INSULATOR     | 2    |
| 1    | 1    | -    | -    | STAINLESS STEEL  | SHELL         | 1    |
| -    | -    | 1    | 1    | STAINLESS STEEL  | SHELL         | 1    |
| 2--1 | 2--0 | 1--1 | 1--0 | MATERIAL         | DESCRIPTION   | ITEM |
| 2    | 1    | 2    | 1    |                  |               |      |

RECOMMENDED MOUNTING HOLE DIM'S



RECOMMENDED CABLE STRIPPING DIM'S



|   |  |  |  |                         |
|---|--|--|--|-------------------------|
| THIS DRAWING IS A CONTROLLED DOCUMENT.  |  | DWN<br>R.SMITH<br>06FEB04  | Tyco Electronics Corporation<br>Bideford, UK, EX39 4HE |                         |
| DIMENSIONS: mm  |  | CHK<br>S.PARLOW<br>06FEB04   | NAME<br>F.WHEELER-KING<br>06FEB04                      |                         |
| TOLERANCES UNLESS OTHERWISE SPECIFIED:  |  | PRODUCT SPEC   |  |                         |
| 0 PLC ± -<br>1 PLC ± -<br>2 PLC ± -<br>3 PLC ± -<br>4 PLC ± -<br>ANGLES ± -<br>FINISH - |  | APPLICATION SPEC<br>108-3460<br>411-3276<br>WEIGHT -                 |  |                         |
| MATERIAL<br>SEE TABLE   |  | PRODUCT SPEC<br>108-3460<br>APPLICATION SPEC<br>411-3276<br>WEIGHT - |  |                         |
|   |  | SIZE<br>A3 00779   |  | DRAWING NO<br>C-1478939 |
|   |  | RESTRICTED TO<br>-   |  |                         |
| CUSTOMER DRAWING  |  | SCALE 1:1  |  | SHEET 1 OF 1 REV B      |