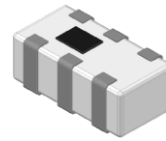


# Multilayer Chip LC Coupler – SLCP Series

Operating Temp. : -40°C~+85°C



## FEATURES

- Small and low profile enables high density mounting
- Low insertion loss and high coupling
- Excellent solderability

## APPLICATIONS

- Mobile communication system, such as CA, LTE, 5G
- Base station application

## PRODUCT IDENTIFICATION

① <b>SLCP</b>	② <b>18</b>	③ <b>-2R700G</b>	④ <b>-01</b>	⑤ <b>T</b>															
①	②	③	④	⑤															
<table border="1"> <tr><td colspan="2">Type</td></tr> <tr><td>SLCP</td><td>LC Coupler</td></tr> </table>		Type		SLCP	LC Coupler	<table border="1"> <tr><td colspan="2">External Dimensions (LxW) (mm)</td></tr> <tr><td>18 [0603]</td><td>1.6x0.8</td></tr> </table>		External Dimensions (LxW) (mm)		18 [0603]	1.6x0.8	<table border="1"> <tr><td colspan="2">Center Frequency</td></tr> <tr><td>Example</td><td>Nominal Value</td></tr> <tr><td>2R700G</td><td>2700MHz</td></tr> </table>		Center Frequency		Example	Nominal Value	2R700G	2700MHz
Type																			
SLCP	LC Coupler																		
External Dimensions (LxW) (mm)																			
18 [0603]	1.6x0.8																		
Center Frequency																			
Example	Nominal Value																		
2R700G	2700MHz																		
<table border="1"> <tr><td colspan="2">Series Code</td></tr> <tr><td colspan="2">01</td></tr> </table>		Series Code		01		<table border="1"> <tr><td colspan="3">Packing</td></tr> <tr><td>T</td><td colspan="2">Tape Carrier Package</td></tr> </table>			Packing			T	Tape Carrier Package						
Series Code																			
01																			
Packing																			
T	Tape Carrier Package																		

## SHAPE AND DIMENSIONS

Type: SLCP18 Series	Dimensions and Land Patterns

## SPECIFICATIONS

### SLCP18 TYPE

Part Number	Center Frequency	Pass Band	Max. IL in PB (at 25°C)	Coupling value	Directivity
Units	MHz	MHz	dB	dB	dB
Symbol	$f_0$	PB	IL	-	-
SLCP18-2R700G-01T	2700	698~960	0.23	25.5±2dB at 698~915MHz	20dB Min.
		1710~2170	0.25	22.5±2dB at 1710~2025MHz	20dB Min.
		2300~2690	0.28	23.5±2dB at 2300~2620MHz	10dB Min.