

25W Flyback Isolated Inductors

EPC3472G & EPC3472G-LF

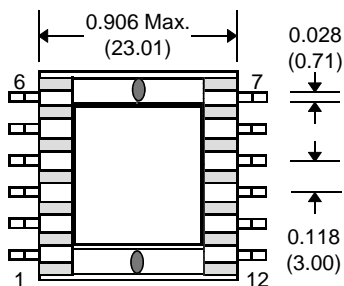
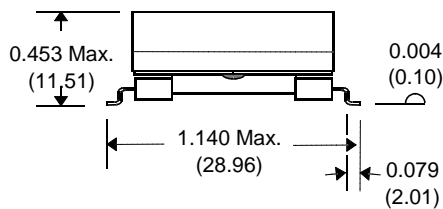
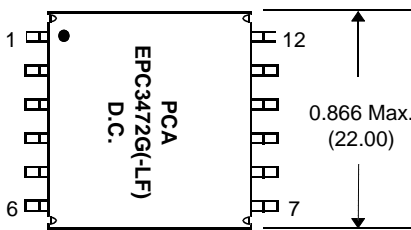


- Designed to work with Linear Tech. LTC4278
- Bobbin : UL94V-0 Recognized Materials
- Storage Temperature : -40°C to +125°C
- Operating Temperature : -40°C to + 85°C
- Class 130°C Insulation System
- Duty Cycle : 62% Max.
- Switching Frequency : 250kHz
- Add "-LF" after part for Lead Free

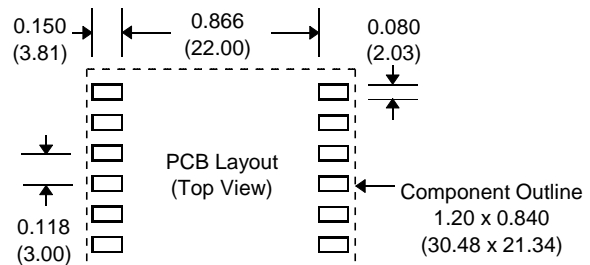
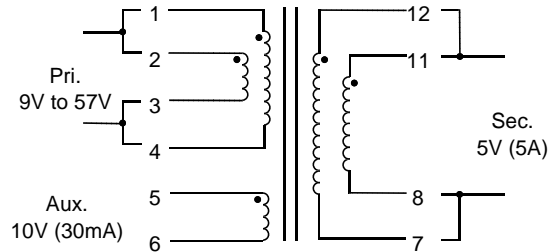
Electrical Parameters @ 25°C

| Inductance ($\mu\text{H} \pm 5\%$) | DCR ($\text{m}\Omega$ Typ.) | | | Turns Ratio | | Cw-w (pF Max.) | Leakage Inductance (μH Max.) | Dielectric Rating (Vrms) |
|-----------------------------------------|---------------------------------|------|------|----------------|-----------|------------------------|---------------------------------------------|-----------------------------|
| | @ 100 KHz, 1.0 Vrms | | | | | @ 100 KHz, 1.0 Vrms | @ 100 KHz, 1.0 Vrms | |
| 9.0 | 13.5 | 280 | 2.6 | 1:0.375 | 1:0.75 | 95 | 0.25 | 1500 |
| Pri. | Pri. | Aux. | Sec. | Pri.:Sec. | Pri.:Aux. | Pri. to Aux. and Sec. | Pri. w/ Aux. and Sec. shorted | Wdg. - Wdg. Wdgs. - Core |

Package



Schematic



| Notes | EPC3472G | EPC3472G-LF |
|---------------------------------------------------------|------------|--------------------------|
| 1. Lead Finish | SnPb | Hot Tin Dip (Sn) or SnCu |
| 2. Peak Solder Rating (for wave solder process Only) | 225°C | 260°C |
| 3. Weight | 13.5 grams | 13.5 grams |
| 4. Packaging Information | (Tray) | 40 pcs / Tray |
| | (T&R) | 150 pcs / Reel |

Unless Otherwise Specified Dimensions are in Inches /mm $\pm .010 / .25$