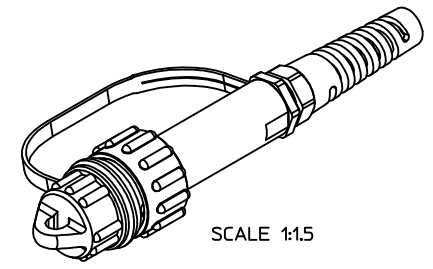
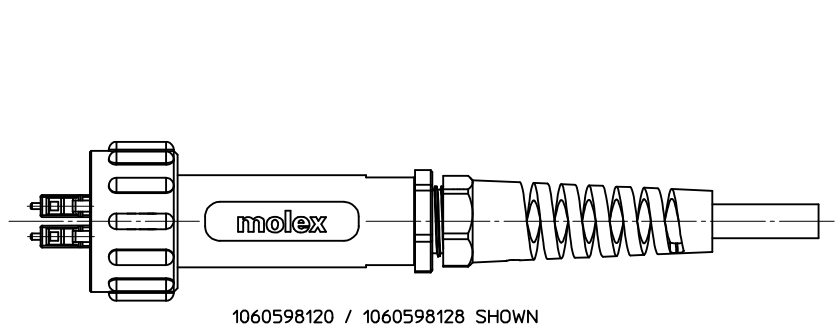
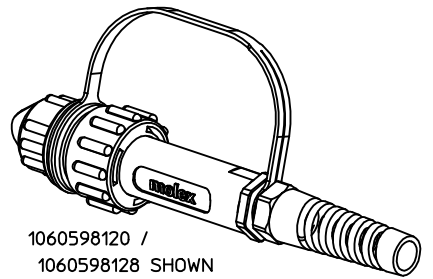
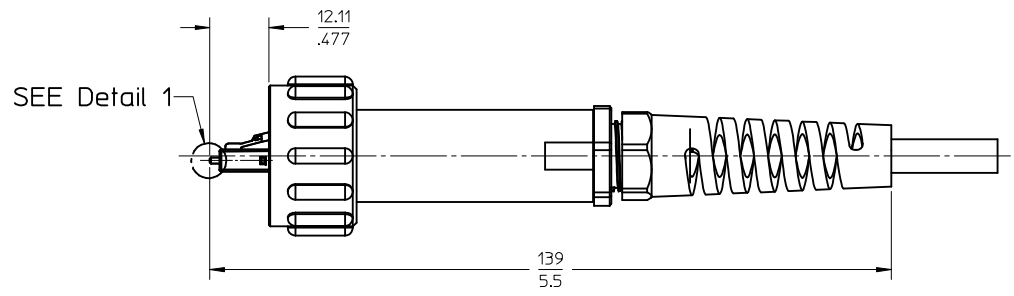
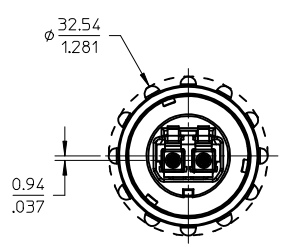
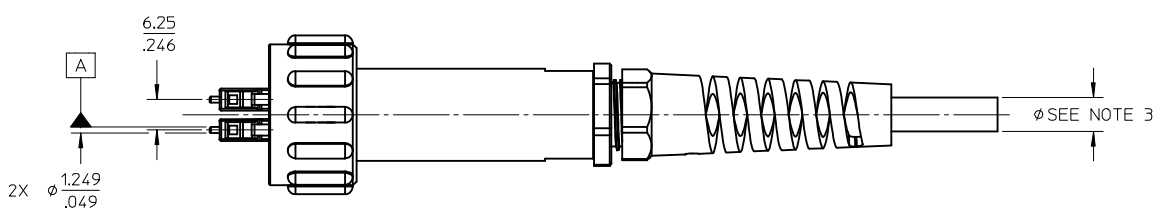
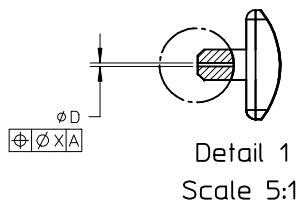


PART NUMBER	CABLE TYPE	ØD (µm)	ØX (µm)	LOGO
1060598100	MULTIMODE	127 +3/-0	3	NO
1060598108	SINGLE MODE	125.5 +0.5/-0	0.5	
1060598116	N/A	N/A	N/A	
1060598120	MULTIMODE	127 +3/-0	3	YES
1060598128	SINGLE MODE	125.5 +0.5/-0	0.5	
1060598117	N/A	N/A	N/A	



1060598120 / 1060598128 SHOWN



1060598120 / 1060598128 SHOWN
SCALE 1:1.5

NOTES:

- DIMENSIONS ARE FOR REFERENCE ONLY.
- DUST CAP AND TETHER SHOWN IN ISO VIEWS ONLY.
- CONNECTOR SUPPORTS CABLES FROM 4 TO 8mm IN DIAMETER.
- 1060598100 / 1060598108 SHOWN UNLESS OTHERWISE NOTED.
- 1060598116 / 1060598117 SUPPLIED WITHOUT LC CONNECTORS.

ENTER DESCRIPTION EC NO: MF2013-0735 /DRWN:AECKHART 2013/05/29 /CHKD:SERNST 2013/05/31 /APPR:WCHEN 2013/06/11 B	QUALITY SYMBOLS ▽=0 ▽=0 ▽=0	GENERAL TOLERANCES (UNLESS SPECIFIED)		DIMENSION STYLE MM/IN		SCALE 1:1	DESIGN UNITS METRIC	THIRD ANGLE PROJECTION		
		4 PLACES	±---	±---	DRAWN BY	DATE	INDUSTRIAL LC CONNECTOR PLASTIC BODY			
		3 PLACES	±---	±---	AECKHART	2013/05/29				
		2 PLACES	±---	±---	CHECKED BY	DATE	molex			
1 PLACE	±---	±---	SERNST	2013/05/31						
0 PLACE	±---	±---	APPROVED BY	DATE	MATERIAL NO. SEE TABLE		DOCUMENT NO. SD-106059-8100		SHEET NO. 1 OF 1	
ANGULAR ±---°		THIS DRAWING CONTAINS INFORMATION THAT IS PROPRIETARY TO MOLEX INCORPORATED AND SHOULD NOT BE USED WITHOUT WRITTEN PERMISSION								