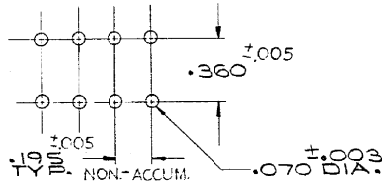
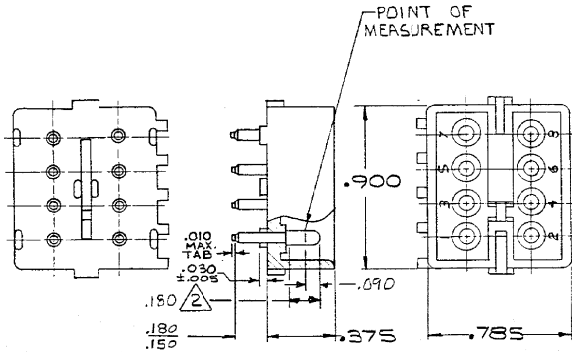


DRAWING MADE IN AMERICAN PROJECTION



RECOMMENDED LAYOUT TO .062 THICK P.C. BOARD

- PARTS COMPLY WITH TE SOLDERABILITY SPEC. NO. 109-11-3
- CONTACT IS PLATED OVERALL WITH .00050 NICKEL, THEN .000030 GOLD OVER CONTACT LENGTH INDICATED, AND .10 IN PLATED ON SOLDER TAIL END.
- DIMENSION SHOWN REPRESENT PRODUCT IN DRY CONDITION. ADDITIONAL 2% GROWTH DUE TO END USE LOCATION MOISTURE ABSORPTION MAY OCCUR AND SHOULD BE ACCOUNTED FOR.

SUPERSEDED BY 1586518-2

350212-2	NYLON	NATURAL	COPPER ALLOY	GOLD
350212-1	NYLON - NATURAL	COPPER ALLOY	PRE-TIN	
ASSEMBLY NO.	HGS. MATL.	COLOR	PIN MATL.	FINISH

PRINTED DIMENSIONS IN INCHES. DO NOT SCALE PRINT.

P3	REVISED PER ECR-21-117185	PJ	VS	200CT
P2	REVISED PER ECR-18-006130	JB	DZ	200CT
P1	REVISED PER ECR-13-008342	AV	RP	13NOV 2013
P	OBS 1-1 2-1 9-1 PER ECR CM-2706	NG	RS	8-9-13
N	OBS 5-1 8-1 PER CM 2213	FE	RS	8-29-13
LTN	REVISION RECORD	DR	CHK	DATE

REQUIRED PER ASSEMBLY		DWG NO.	NUMBER	NAME	REMARKS	ITEM NO.
		© 1978 BY AMP INCORPORATED. ALL RIGHTS RESERVED. AMP PRODUCTS COVERED BY PATENTS AND/OR PATENTS PENDING.			CUSTOMER COPY REFERENCE ONLY	
DR	<i>W. White</i>	DATE	3/14/73	MATERIAL AND FINISH		TE Connectivity
CHK	<i>W. White</i>	DATE	3/14/73	SEE TABLE		
APP	<i>Thibault</i>	DATE	4-3-73	WIRE - RANGE - INSULATION		PIN HEADER
				TOLERANCE EXCEPT AS NOTED		
				SCALE		NO B 350212
				LOC CM		
				NAME		P3
				8 CIRCUIT MATE-N-LOK P.C. BOARD HEADER		
DESCRIPTION						