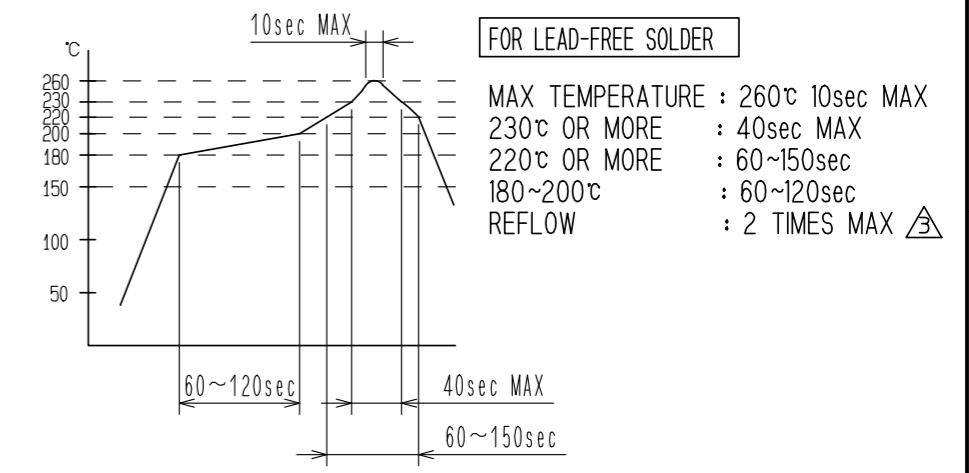
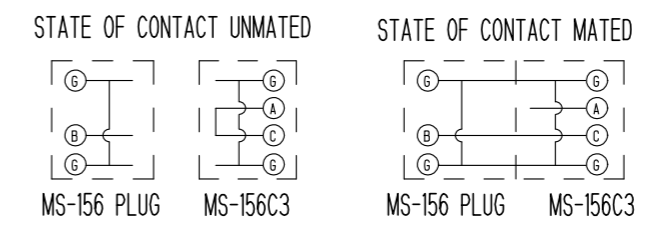


Apr.1.2023 Copyright 2023 HIROSE ELECTRIC CO., LTD. All Rights Reserved.
In case of consideration for using Automotive equipment / device which demand high reliability, kindly contact our sales window correspondents.

RECOMMENDED REFLOW TEMPERATURE PROFILE

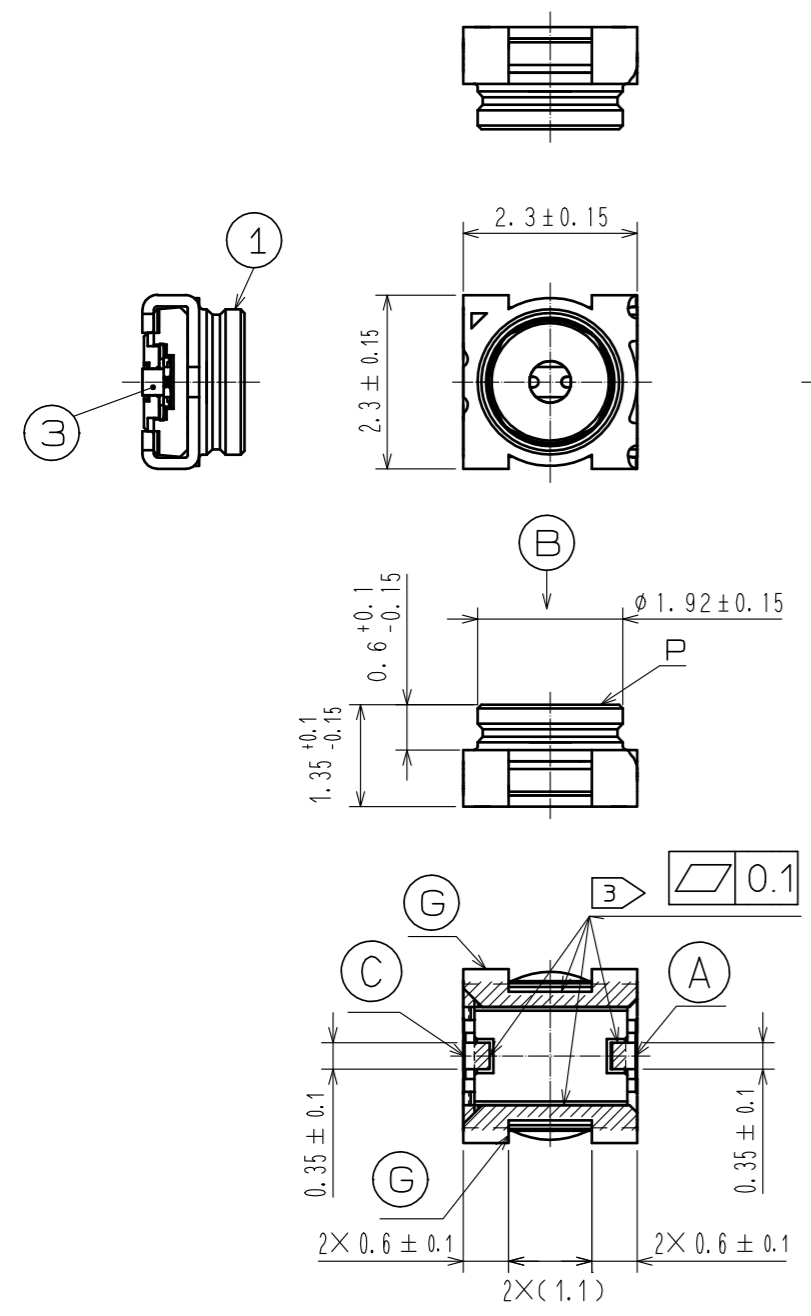


NOTE 1. Circuit shall be as follows.



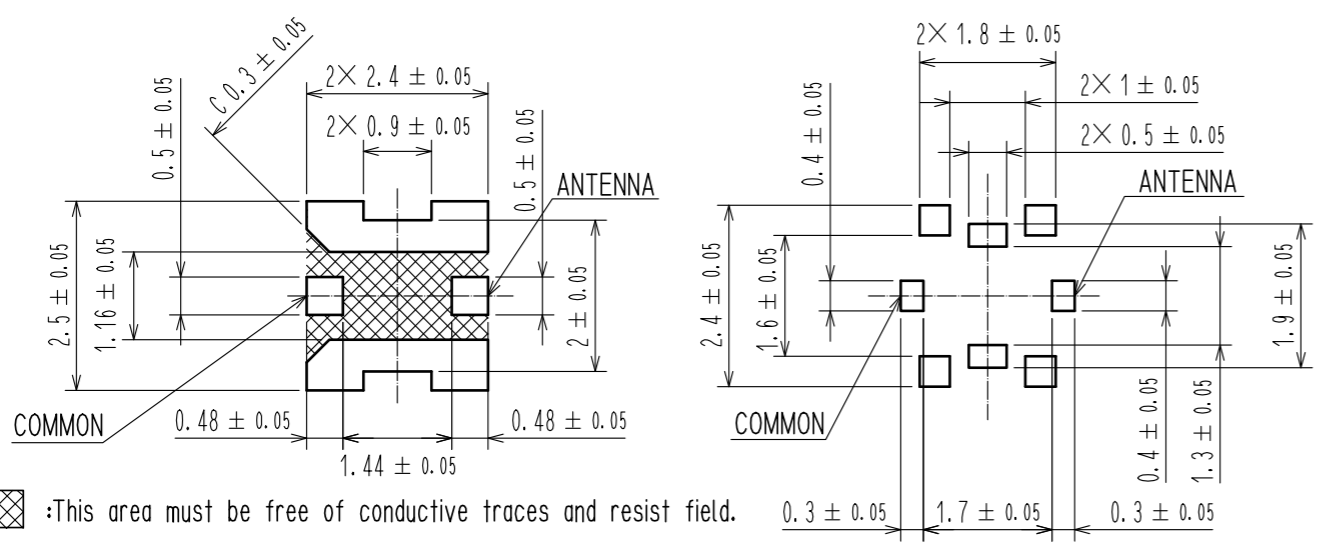
- For use of this product, be sure to put contact area of plug on position P perpendicularly.
- Lead co-planarity is to be 0.1mm MAX.
- Do not use the washing process.
- Please do not change the specified layout of the PCB dimension and the layout of the stencil plate dimension and thickness otherwise could not be responsible for the solderability of the product.
- This product is intended to be used for circuit inspection only. Consult us if any other application is considered.
- Do not use hand soldering for mounting of MS-156C3.

HRS DRAWING FOR REFERENCE



5 SPECIFIED PCB LAYOUT

5 SPECIFIED STENCIL PLATE THICKNESS: 0.1mm

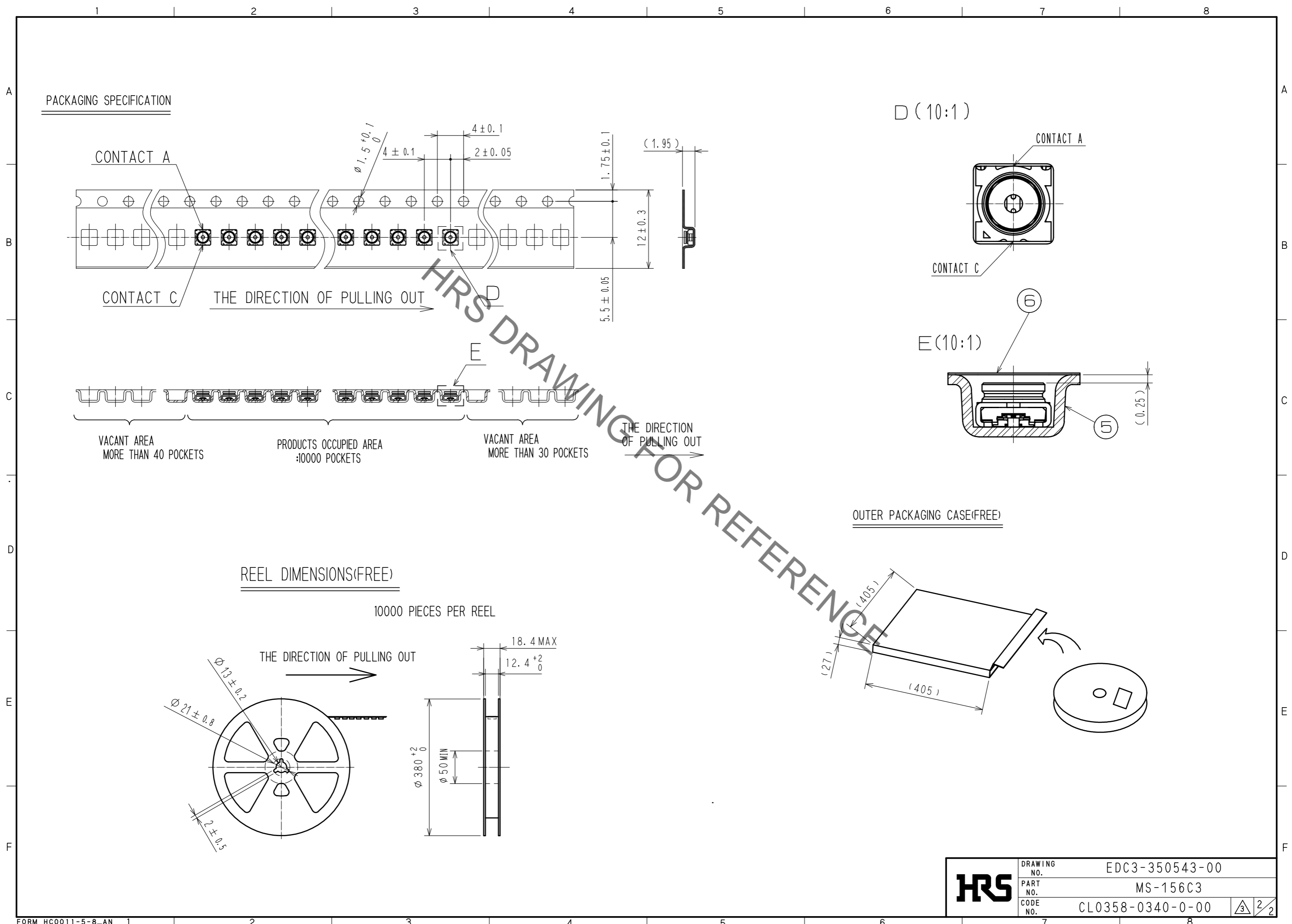


: This area must be free of conductive traces and resist field.

HALOGEN FREE COMPLIANT

3	CU-NI-SI-ALLOY	SELECTIVE GOLD PLATING	6	PET			
2	PA-M		5	PS			
1	PHOSPHOR BRONZE	GOLD PLATING	4	PHOSPHOR BRONZE	SELECTIVE GOLD PLATING		
NO.	MATERIAL	FINISH . REMARKS	NO.	MATERIAL	FINISH . REMARKS		
UNITS		SCALE	COUNT	DESCRIPTION OF REVISIONS	DESIGNED	CHECKED	DATE
mm		10 : 1	1	DIS-D-00014617	MT. KANEKO	NK. NINOMIYA	20230124
APPROVED : MH. YAMANE				20131129	DRAWING NO. EDC3-350543-00		
CHECKED : NK. NINOMIYA				20131128	PART NO. MS-156C3		
DESIGNED : TS. NAKAGAWA				20131127	CODE NO. CL0358-0340-0-00		
DRAWN : TS. NAKAGAWA				20131127	1/2		

Apr.1.2023 Copyright 2023 HIROSE ELECTRIC CO., LTD. All Rights Reserved.
 In case of consideration for using Automotive equipment / device which demand high reliability, kindly contact our sales window correspondents.



HRS DRAWING FOR REFERENCE

HRS	DRAWING NO.	EDC3-350543-00
	PART NO.	MS-156C3
	CODE NO.	CL0358-0340-0-00
		3/2