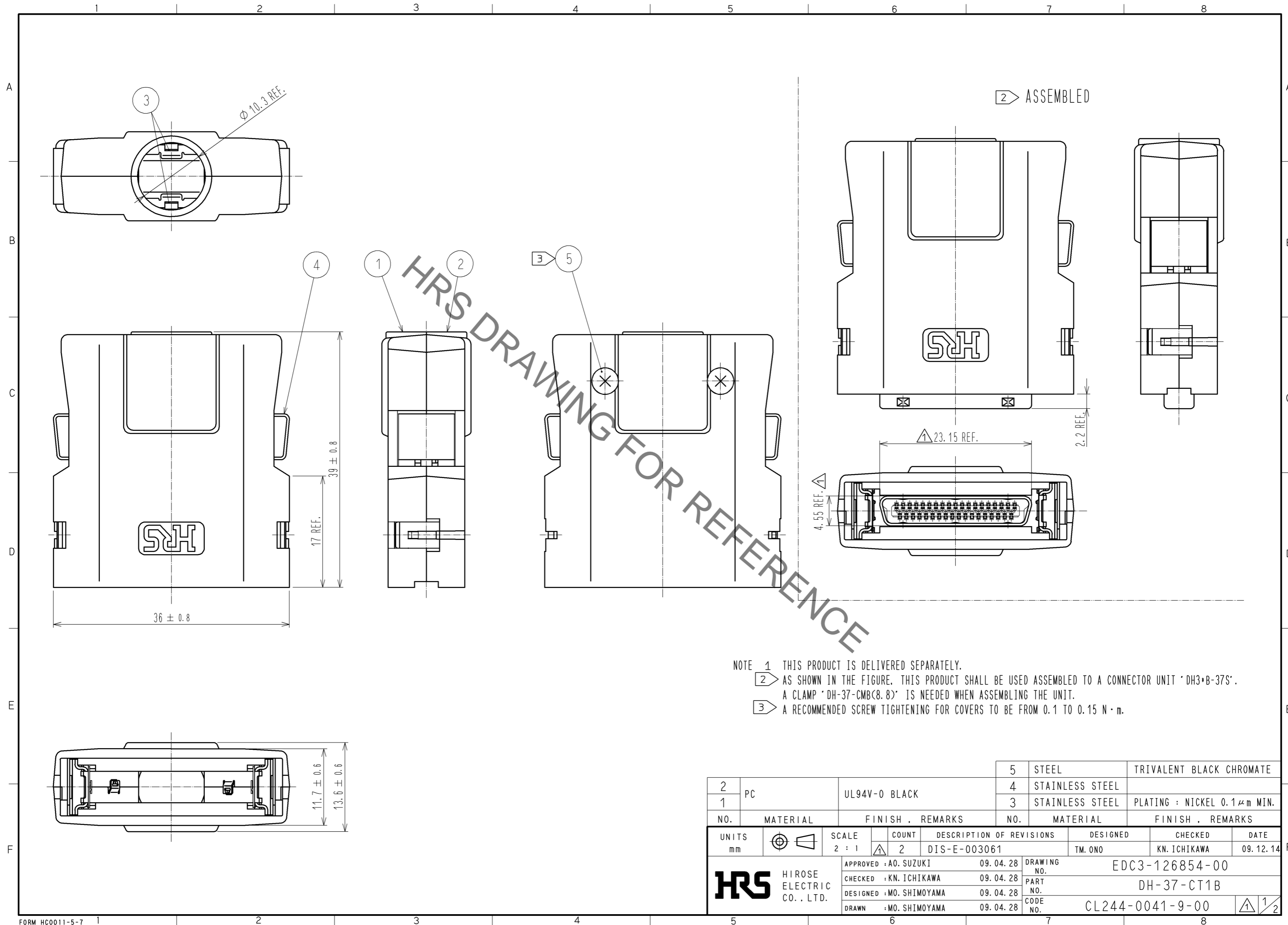


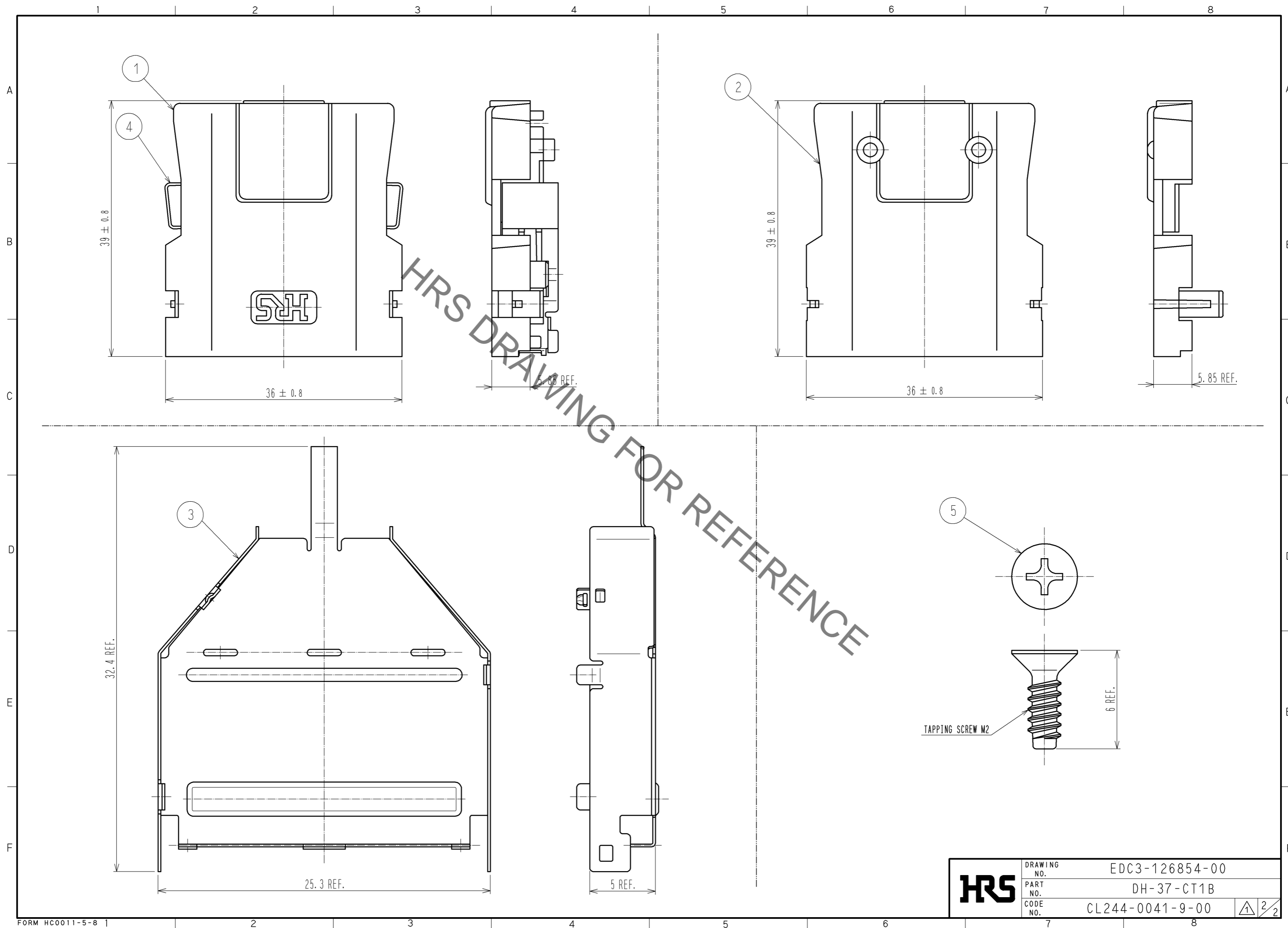
May.1.2023 Copyright 2023 HIROSE ELECTRIC CO., LTD. All Rights Reserved.
In case of consideration for using Automotive equipment / device which demand high reliability, kindly contact our sales window correspondents.



NOTE 1 THIS PRODUCT IS DELIVERED SEPARATELY.
 2 AS SHOWN IN THE FIGURE, THIS PRODUCT SHALL BE USED ASSEMBLED TO A CONNECTOR UNIT 'DH3*B-37S'.
 A CLAMP 'DH-37-CMBC(8.8)' IS NEEDED WHEN ASSEMBLING THE UNIT.
 3 A RECOMMENDED SCREW TIGHTENING FOR COVERS TO BE FROM 0.1 TO 0.15 N·m.

2	PC	UL94V-0 BLACK	5	STEEL	TRIVALENT BLACK CHROMATE		
1			4	STAINLESS STEEL			
			3	STAINLESS STEEL	PLATING : NICKEL 0.1μm MIN.		
NO.	MATERIAL	FINISH . REMARKS	NO.	MATERIAL	FINISH . REMARKS		
UNITS	⊕	SCALE	COUNT	DESCRIPTION OF REVISIONS	DESIGNED	CHECKED	DATE
mm		2 : 1	2	DIS-E-003061	TM. ONO	KN. ICHIKAWA	09.12.14
APPROVED : A0. SUZUKI		09.04.28		DRAWING NO.		EDC3-126854-00	
CHECKED : KN. ICHIKAWA		09.04.28		PART NO.		DH-37-CT1B	
DESIGNED : MO. SHIMOYAMA		09.04.28		CODE NO.		CL244-0041-9-00	
DRAWN : MO. SHIMOYAMA		09.04.28				1/2	

May.1.2023 Copyright 2023 HIROSE ELECTRIC CO., LTD. All Rights Reserved.
In case of consideration for using Automotive equipment / device which demand high reliability, kindly contact our sales window correspondents.



HRS	DRAWING NO.	EDC3-126854-00
	PART NO.	DH-37-CT1B
	CODE NO.	CL244-0041-9-00
		2/2