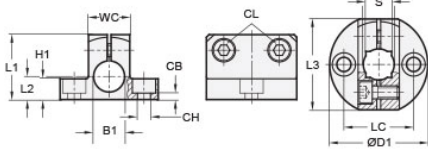




MT16/16-CB2W-AN

Ruland Two-Way Base Connector, Thru Hole 16mm, Base Diameter 45mm, Black Anodized Aluminum




Description

Ruland MT16/16-CB2W-AN is a two-way base connector with a 45mm base diameter, 16mm round thru holes, M6 clamp screws, and an overall length of 31mm. It is designed to fit with Ruland tubes that begin with MT16. MT16/16-CB2W-AN is aluminum with a black anodized finish and screws are 304 stainless steel for added corrosion resistance when compared to unplated types. This two-way base connector is typically used as a base in support structures for mounting sensors, screens, reflectors, plexiglass machine guards, and other industrial components. It can be permanently installed on extruded aluminum frames, sheet metal, and other surfaces using M6 hardware or the user can opt for portability by using MAGNET-57-32 magnetic base. MT16/16-CB2W-AN can have MT16 round tubes installed vertically and/or horizontally giving system designers a high degree of flexibility to customize the base to the needs of applications throughout the equipment. MT15:16:20-ALK-M6-25 adjustable clamping handles can be used in place of standard hardware if rapid fine repositioning of the tube is required. MT16/16-CB2W-AN is manufactured by Otto Ganter, inventoried by Ruland, and RoHS3 compliant.

Product Specifications

Thru Hole 1 Diameter B1	16 mm	Thru Hole 2 Diameter B2	16 mm
Thru Hole Tolerance	+0.11/-0 mm	Thru Hole 2 Tolerance	+0.11/-0 mm
Clamp Width WC	20 mm	Clamp Length L3	41 mm
Base Diameter D1	45 mm	Overall Height H1	31 mm
Center To Center LC	32 mm	Edge To Center L2	10 mm
Counterbore Hole CH	M6	Counterbore to Base CB	4 mm
Clamp Screw CL	M6	Weight (lbs)	0.133200
Material Specification	Anodized Aluminum	Manufacturer	JW Winco/ Otto Ganter
UPC	634529232187	Country of Origin	Germany
Tariff Code	7609.00.0000	UNSPC	31162908

Note 1 Performance ratings are for guidance only. The user must determine suitability for a particular application.

Prop 65  **WARNING** This product can expose you to the chemical Nickel (metallic), known to the State of California to cause cancer. For more information go to www.P65Warnings.ca.gov.