



ANATECH ELECTRONICS INC
RF & Microwave Filters & Products

PCS Ceramic BPF

Part Number: AM881B347



Electrical specifications

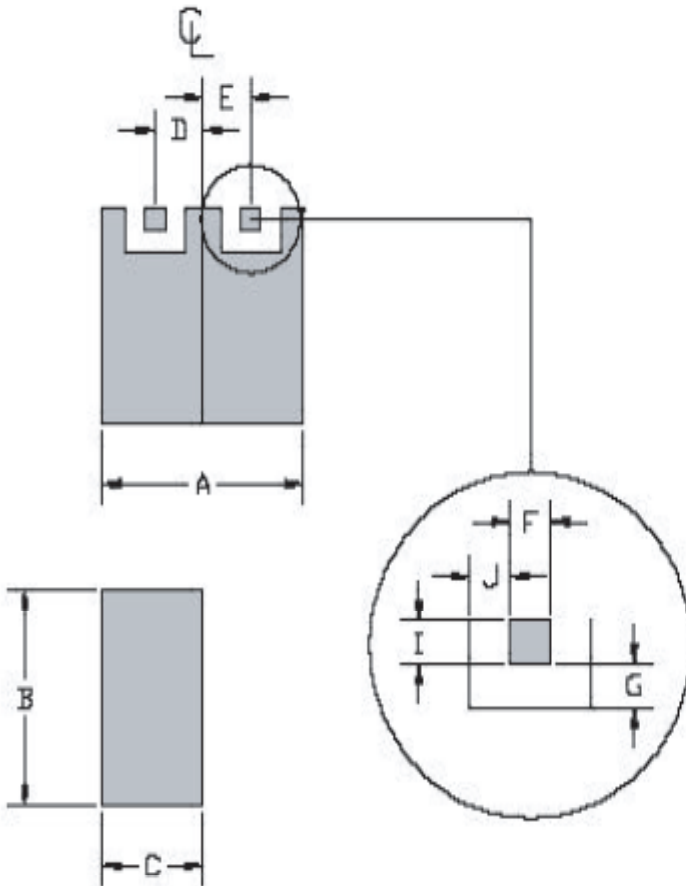
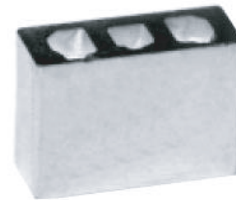
Center Frequency: 881 MHz
Bandwidth: 25 MHz
Input / Output Impedance: 50 Ohms
Passband: 869-894 MHz
Passband Insertion Loss: 3.5 dB max
Passband Ripple: 1.0 dB max
Passband Return Loss: 8.0 dB min
Rejection: 849 MHz 18.0dB 15.0dB min
Rejection 2: 914 MHz 11.5dB 9.0dB min
Power Handling: 1 W

Mechanical

Mounting Method: SMT
Dimensions: 11.8 x 9.1 x 4.5 mm

Environmental

Operating Temperature: -30°C to +70°C
Storage Temperature: -50°C to +90°C



Dim	Nominal (mm)	Tolerance (mm) +/- or max
A	11.8	max
B	9.1	max
C	4.5	max
D	3.31	0.127
E	3.31	0.127
F	1.27	0.127
G	0.77	0.127
H		
I	1.8	0.127
J	0.77	0.127



ANATECH ELECTRONICS INC
RF & Microwave Filters & Products

PCS Ceramic BPF

Part Number: AM881B347



Response Plot:

