

# Type LPT-08

## “Add-On” Automotive Fuse Holder

### Tiny Automotive Blade Type Fuse



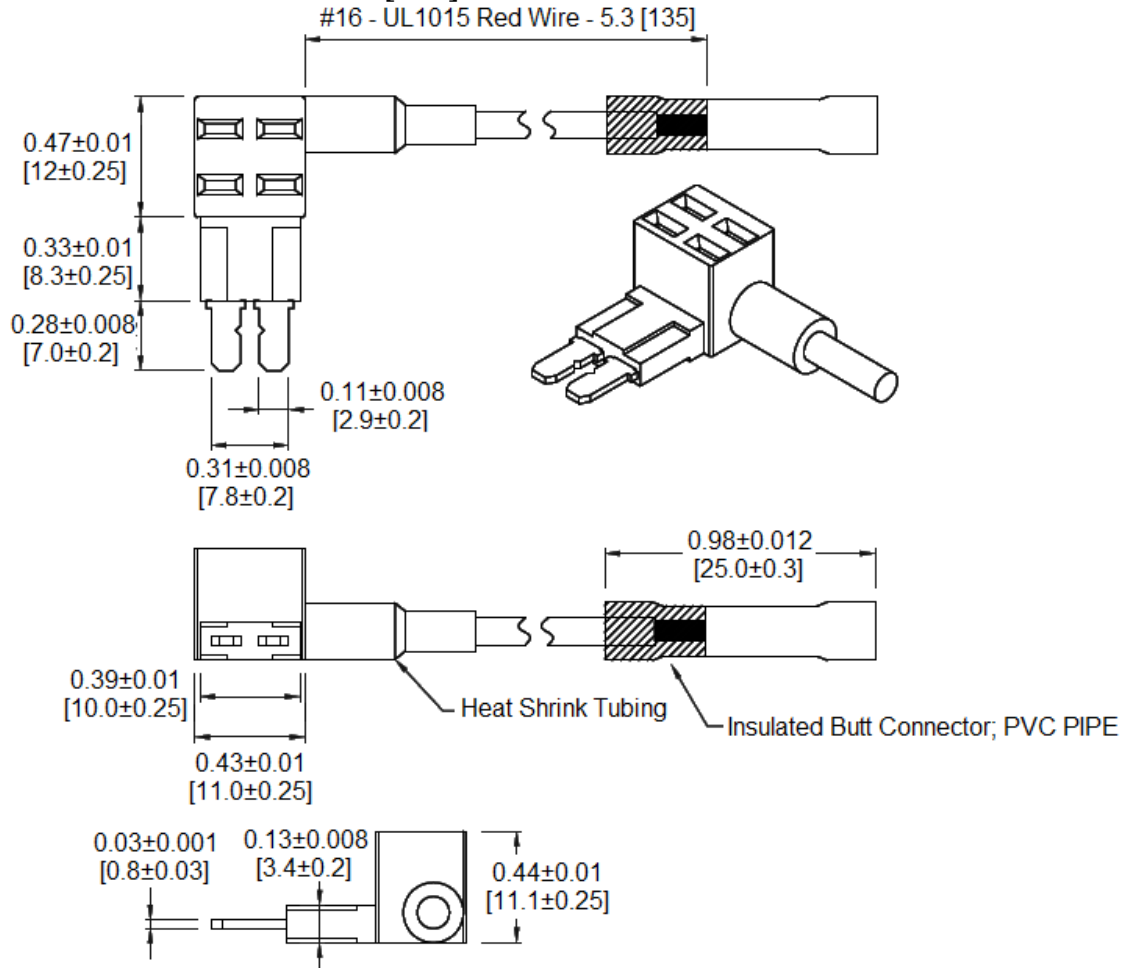
www.optifuse.com

(619) 593-5050

Rating: 58VDC  
 Max Combined Current - Both Circuits - 30A  
 Max Primary Circuit - 25A  
 Max Auxiliary Circuit - 15A

Body Material: Nylon PA66 UL 94V-0  
 Terminals: Tin Plated Brass  
 For use with Type APT Fuse - Tiny (Micro2) Automotive Blade Type  
 Wire: 16 AWG Red Wire  
 Connector: Butt-Splice Connector

#### Mechanical Dimensions: Inches [mm]



	<p><b>Warning:</b> -Operation beyond the specified maximum ratings or improper use may result in damage and possible electrical arcing and/or flame.</p>
	<p>-Device is intended for occasional overcurrent protection. Application for repeated overcurrent condition and/or prolonged trip are not anticipated.</p>
	<p>-Avoid contact of device with chemical solvent. Prolonged contact will damage the device performance.</p>

Note: All specifications and dimensions subject to change without notice.

Rev B 11/2015 - Page: 1/1  
 Code G02-01H