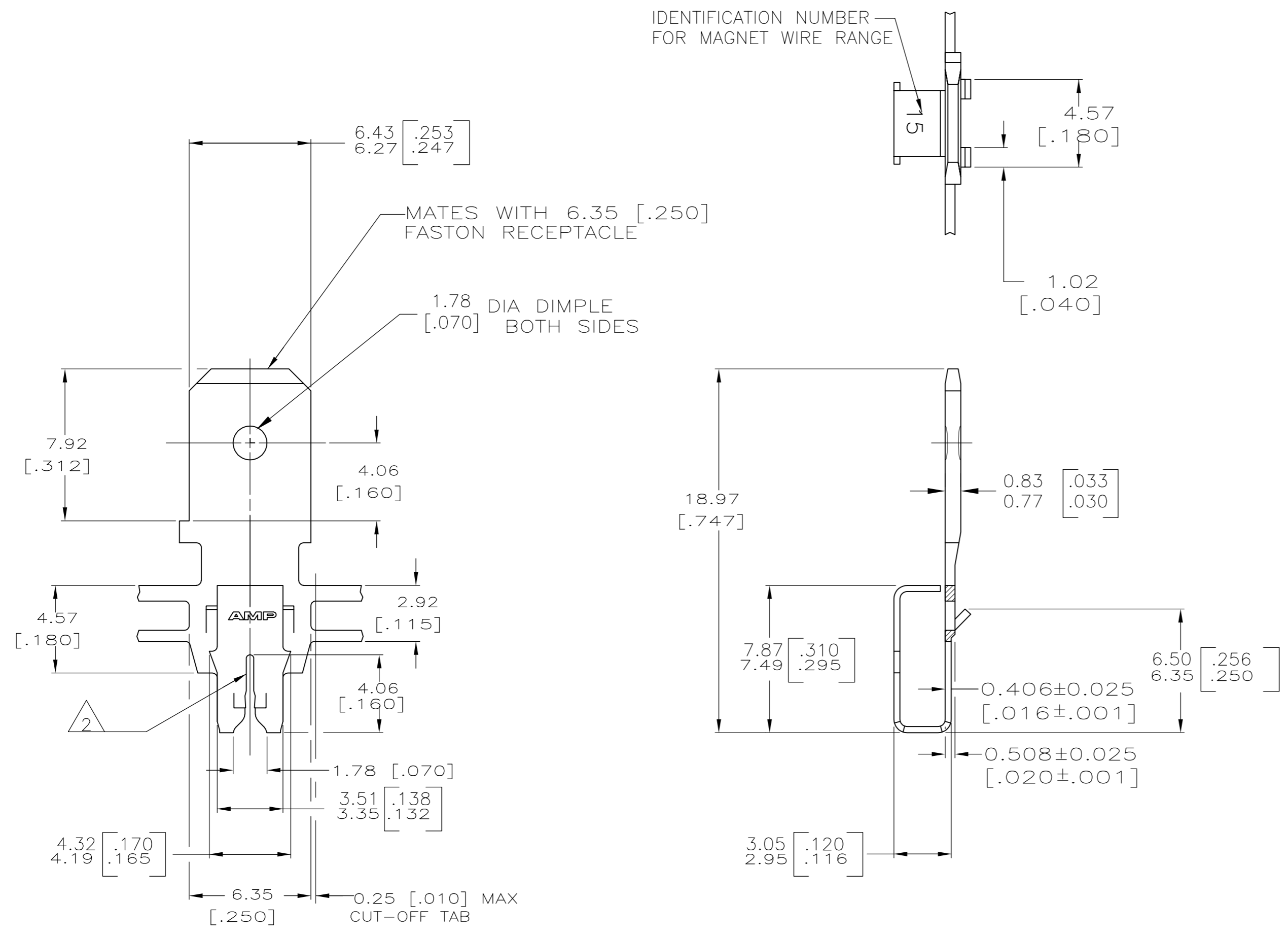


THIS DRAWING IS UNPUBLISHED. RELEASED FOR PUBLICATION
 © COPYRIGHT - By - ALL RIGHTS RESERVED.

| REVISIONS | | | | |
|-----------|-----|---------------------------|-----------|-------|
| P | LTR | DESCRIPTION | DATE | APVD |
| G3 | | REVISED PER ECR-18-018655 | 11DEC2018 | BW SV |

- 1 CONTINUOUS STRIP ON REELS WITH TERMINALS LOCATED ON 8.38±0.08 [.330±.003] CENTERS.
- 2 SLOT TERMINATES A SINGLE COPPER OR ALUMINIUM MAGNET WIRE. COPPER WIRE RANGE: 0.64-0.81mm [#22-#20] AWG OR ALUMINUM WIRE RANGE: 0.72-0.91mm [#21-#19] AWG. ALUMINUM WIRE RANGE APPLIES FOR POST-TIN PLATED VERSIONS ONLY.
- 3 TIN PLATED



| | | |
|----------|----------------------|-------------|
| | 082 PRE-MILLED BRASS | 63601-2 |
| OBSOLETE | 4M PRE-MILLED BRASS | 63601-1 |
| | MATERIAL | PART NUMBER |

| | | | | |
|--|--|------------------------------------|--------------------------------|---------------|
| THIS DRAWING IS A CONTROLLED DOCUMENT. | | DWN 14JAN2005 MICHAEL S. FEHER | TE TE Connectivity Ltd. | |
| DIMENSIONS: INCHES | | CHK 14JAN2005 KURT A. RANDOLPH | | |
| TOLERANCES UNLESS OTHERWISE SPECIFIED: | | APVD 14JAN2005 KURT A. RANDOLPH | NAME | |
| 0 PLC ± - | | PRODUCT SPEC | TAB, | |
| 1 PLC ± - | | APPLICATION SPEC | 6.35 [.250] FASTON, | |
| 2 PLC ± - | | 114-2094 | 300 SERIES MAG-MATE | |
| 3 PLC ± 0.25 [.010] | | SIZE | CAGE CODE | DRAWING NO |
| 4 PLC ± - | | 114-2094 | A2 | 00779 |
| ANGLES ± - | | WEIGHT | C=63601 | |
| FINISH | | CUSTOMER DRAWING | | RESTRICTED TO |
| 3 | | SCALE 5:1 | | SHEET 1 of 1 |
| SEE TABLE | | REV G3 | | |