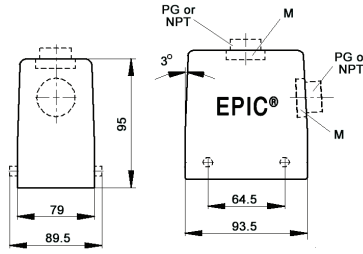


EPIC® HB 32 standard hood

Hood with double lever bolts



all dimensions are in mm



Technical data

IP Protection class: NEMA 4, NEMA 12
IP65

Complete the installation



HB dust covers
page 429

Approvals



PG

PG hood		SKINTOP® gland	
size	part number	plastic	metal
Top entry			
PG 21	101330	53015050	52015750
PG 29	101340	53015060	52015760
Side entry			
PG 21	101350	53015050	52015750
PG 29	101360	53015060	52015760

PG hood provided with EPIC® SM/SP gland

NPT

NPT hood		SKINTOP® gland	
size	part number	plastic	metal
Top entry			
3/4"	101330NP	S 1134	53112034
1"	101340NP	S 1101	53112044
1 1/4"	101343NP	—	53112054
Side entry			
3/4"	101350NP	S 1134	53112034
1"	101360NP	S 1101	53112044

NPT hood provided with NPT fitting

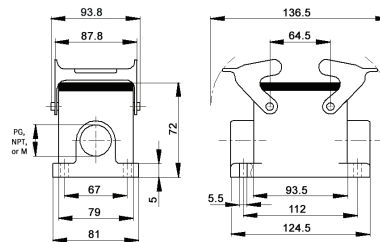
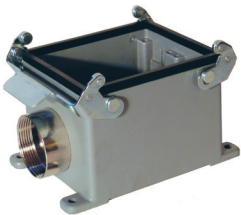
metric

Metric hood		SKINTOP® gland	
size	part number	plastic	metal
Top entry*			
M25x2	44422022	53111030	53112030
M32	19134000	53111040	53112040
M32x2	44422023	53111040	53112040
M40	19134400	53111050	53112050
Side entry			
M25	19135000	53111030	53112030
M32	19136000	53111040	53112040
M40	19136200	53111050	53112050

* Metric top-entry hoods do not come with a neck

EPIC® HB 32 surface mount base

Surface mount base with double levers



all dimensions are in mm

Technical data

IP Protection class: NEMA 4, NEMA 12
IP65

Complete the installation



HB dust covers
page 429

Approvals



PG

PG base		SKINTOP® gland	
size	part number	plastic	metal
One entry			
PG 29	101370	53015060	52015760
Two entries			
PG 29	101380	53015060	52015760

PG base provided with EPIC® SM/SP gland

NPT

NPT base		SKINTOP® gland	
size	part number	plastic	metal
One entry			
1"	101370NP	S 1101	53112044
Two entries			
1"	101380NP	S 1101	53112044

NPT base provided with NPT fitting

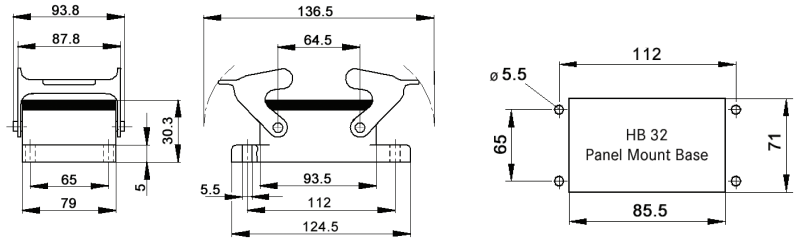
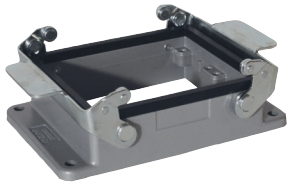
metric

Metric base		SKINTOP® gland	
size	part number	plastic	metal
One entry			
M32	19137000	53111040	53112040
M40	19145400	53111050	53112050
Two entries			
M32	19138000	53111040	53112040
M40	19146400	53111050	53112050

Recommended SKINTOP® assumes minimal OD variance. Additional configurations are available; please see our SKINTOP® section.
If not otherwise specified, all values relating to the product are nominal values.
Photographs are not to scale and are not true representations of the products in question.

EPIC® HB 32 panel mount base

Panel mount base with double levers



all dimensions are in mm

Technical data	
IP Protection class:	NEMA 4, NEMA 12 IP65

Complete the installation

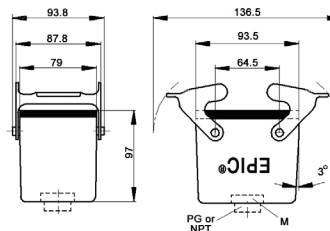
HB dust covers
page 429

Approvals

Dust cover included	Part number
no	101320C0

EPIC® HB 32 cable coupler hood

Cable coupler with double levers



all dimensions are in mm

Technical data	
IP Protection class:	NEMA 4, NEMA 12 IP65

Complete the installation

HB dust covers
page 429

Approvals

PG

PG coupler size	PG coupler part number	SKINTOP® gland	
		plastic	metal
PG 21	101390	53015050	52015750
PG 29	101395	53015060	52015760

PG coupler provided with EPIC® SM/SP gland

NPT

NPT coupler size	NPT coupler part number	SKINTOP® gland	
		plastic	metal
3/4"	101390NP	S1134	53112034
1"	101395NP	S1101	53112044

NPT coupler provided with NPT fitting

metric

Metric coupler size	Metric coupler part number	SKINTOP® gland	
		plastic	metal
M32	19139500	53111040	53112040

Metric couplers do not come with a neck

Recommended SKINTOP® assumes minimal OD variance. Additional configurations are available; please see our SKINTOP® section. If not otherwise specified, all values relating to the product are nominal values. Photographs are not to scale and are not true representations of the products in question.