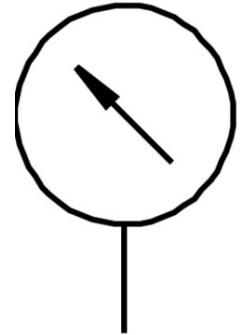


Precision pressure gauge MAP-40-16-1/8-EN

Part number: 161128

FESTO



Data sheet

| Feature | Value |
|-------------------------------------|--|
| Display range | 0 bar ... 16 bar |
| Display range | 0 psi ... 232 psi |
| Symbol | 00991463 |
| Conforms to standard | EN 837-1 |
| Pressure gauge nominal size | 40 |
| Explosion prevention and protection | Observe the information on the certificate Zone 1 (ATEX) Zone 2 (ATEX) Zone 21 (ATEX) Zone 22 (ATEX) |
| Structural design | Bourdon tube pressure gauge |
| Type of mounting | Line installation |
| Operating medium | Inert gas Neutral liquids |
| Operating pressure | 0 MPa ... 1.6 MPa |
| Operating pressure | 0 bar ... 16 bar |
| Operating pressure | 0 psi ... 232 psi |
| Intermittent load factor | 0.66 |
| Measurement accuracy class | 1.6 |
| Degree of protection | IP43 |
| Temperature of medium | -20 °C ... 60 °C |
| Ambient temperature | -20 °C ... 60 °C |
| LABS (PWIS) conformity | VDMA24364-B1/B2-L |
| Note on materials | RoHS-compliant |
| Connection position | Centered on rear side |
| Pneumatic connection | R1/8 |
| Materials in contact with the media | Brass |
| Material of screwed trunnion | Brass |
| Housing material | PBT |
| Inspection window material | PS |
| Housing colour | Black |
| Product weight | 60 g |

| Feature | Value |
|--|---|
| Information on operating and pilot media | No acetylene No oxygen |
| Scale | Double scale bar (außen) psi (internal) |