

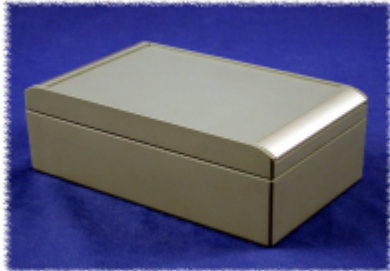


Quality Products. Service Excellence.

Watertight - Thick Wall Diecast Aluminum R190-R191 Series

aluCASE

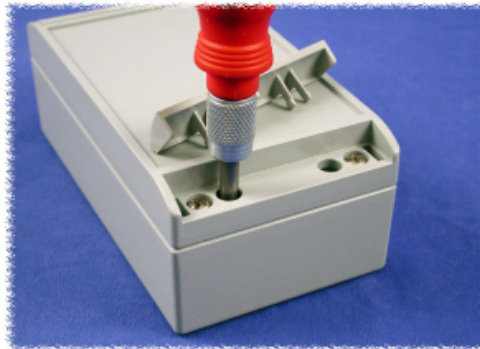
Key Features:



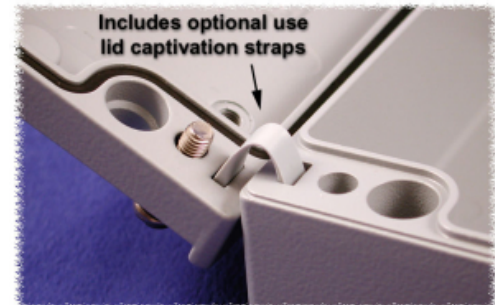
- Modern, high quality instrument enclosure
- Material - Aluminum die-cast: GD SI 12 / DIN 1725
- Shallow lid, deep body
- Captive stainless steel lid screws
- Enclosure can be mounted after closing lid
- Integrated 1.7 mm recess in lid for membrane keypads and front panels
- Neoprene oil and petrol resistant - thermoplastic gasket standard. (-40°C up to +120°C)
- Clip-on design covers - to hide mounting & lid screws (plastic - polyoxymethylene) - grey RAL 7040
- Complete with lid captivation devices
- Degree of protection: NEMA 4X, IP67
- CSA and UL listed, Type 4
- Textured polyester powder coat, grey RAL 7040. (can be supplied unpainted on special order)



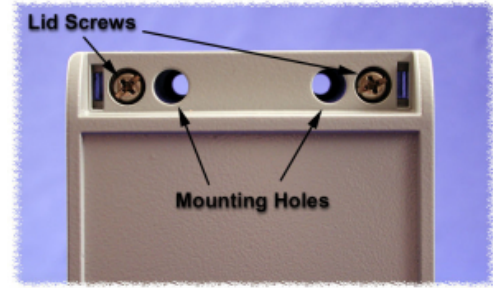
Features (click to enlarge)



Enclosure can be installed after closing lid.



Includes optional use lid captivation straps.



Snap in design covers hide both lid screws and installation holes.

Mounting holes accessible with lid closed. All holes outside of gasket seal.

| Part Number | Width | Length | Depth (Including Lid) |
|--------------|-------|--------|--------------------------|
| R191-052-000 | 50 | 75 | 33 |
| R191-054-000 | 50 | 100 | 33 |
| R191-070-000 | 70 | 100 | 50 |
| R191-090-000 | 90 | 120 | 60 |
| R191-072-000 | 70 | 140 | 50 |
| R190-110-000 | 110 | 140 | 60 |
| R191-092-000 | 90 | 160 | 60 |
| R190-130-000 | 130 | 160 | 70 |
| R191-074-000 | 70 | 180 | 50 |
| R190-150-000 | 150 | 180 | 60 |
| R191-150-000 | 150 | 180 | 90 |
| R190-112-000 | 110 | 200 | 60 |
| R190-170-000 | 170 | 200 | 60 |
| R191-170-000 | 170 | 200 | 90 |
| R190-132-000 | 130 | 220 | 70 |
| R191-200-100 | 200 | 230 | 120 |
| R191-094-000 | 90 | 250 | 60 |
| R190-152-000 | 150 | 260 | 60 |
| R191-152-000 | 150 | 260 | 90 |
| R190-172-000 | 170 | 280 | 60 |
| R191-172-000 | 170 | 280 | 90 |
| R191-202-100 | 200 | 330 | 120 |

Tags: Rolec, diecast, aluminum, thick wall, NEMA, screw cover, alucase

Data subject to change without notice

