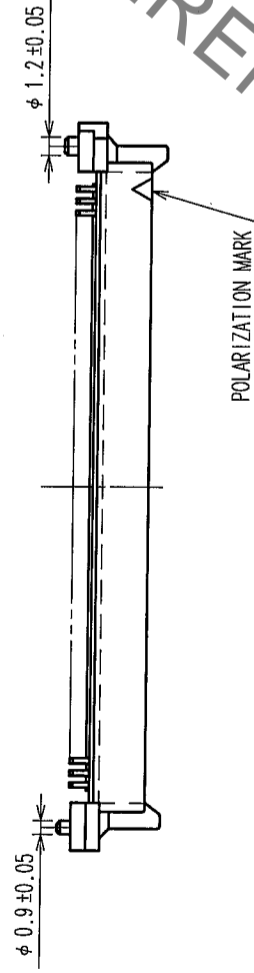
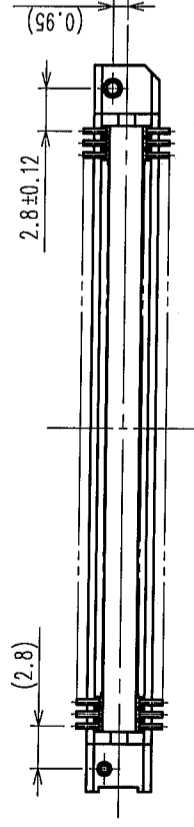
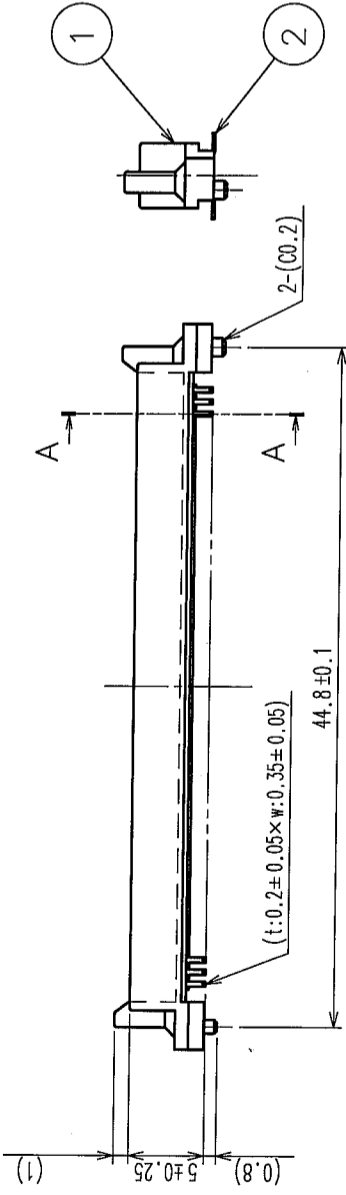
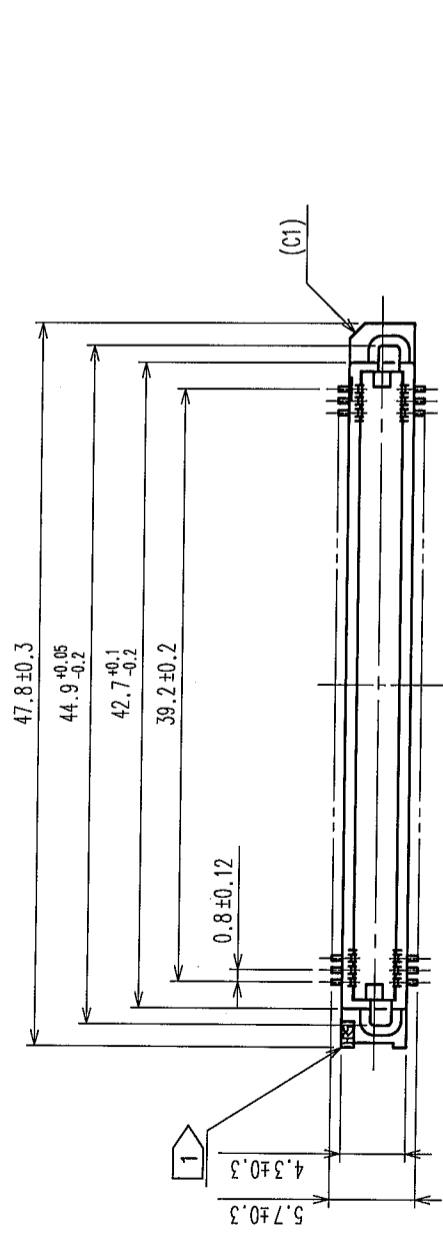
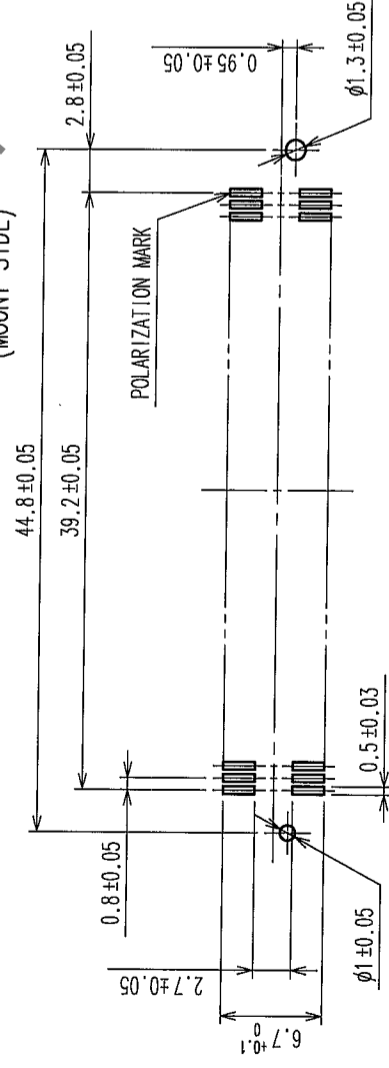


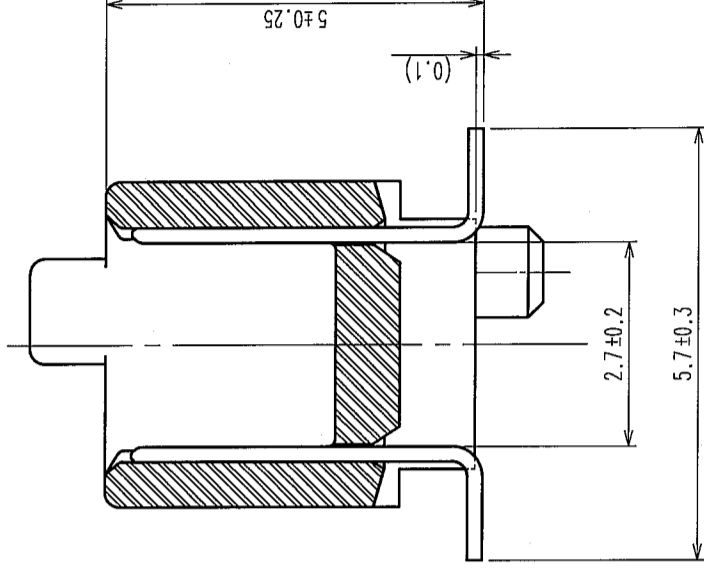
COUNT	DESCRIPTION OF REVISIONS	BY	CHKD	DATE	COUNT	DESCRIPTION OF REVISIONS	BY	CHKD	DATE
△					△				
△					△				
△					△				



RECOMMENDED LAND PATTERN DIMENSIONS (MOUNT SIDE)



A-A (10:1)



HRS DRAWING FOR REFERENCE

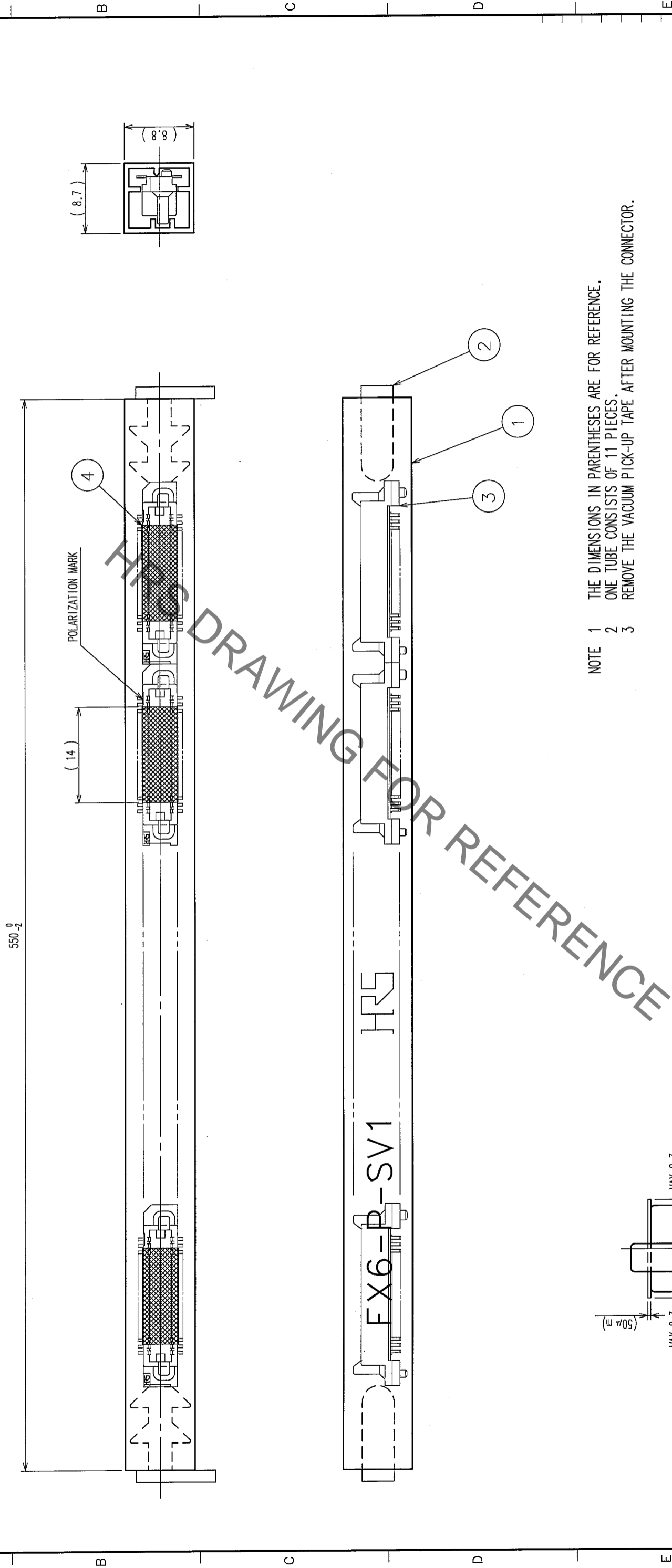
NOTE

- HRS MARK SHALL BE OPTIONAL.
- LEAD CO-PLANARITY SHALL BE 0.1mm MAX.
- THE DIMENSIONS IN PARENTHESES ARE FOR REFERENCE.
- TUBE PACKAGING SHALL BE APPLIED FOR THIS PRODUCT. SEE NEXT PAGE FOR DETAILS.
- THIS PRODUCT HAS TAPE FOR VACUUM PICKUP. SEE NEXT PAGE FOR DETAIL OF STICKING POSITION, ETC.
- FOR MODIFICATION, ETC., PREVENTIVE HOLE FOR SINK MARK MAY BE ADDED ACCORDING TO CIRCUMSTANCES.

NO.	MATERIAL	FINISH, REMARKS	NO.	MATERIAL	FINISH, REMARKS
1	PPS	LIGHT BROWN UL94V-0	2	PHOSPHOR BRONZE	
CODE NO. (OLD)		CL	CONTACT AREA: GOLD 0.1μm min.		
DRAWN		T. YANAGISAWA	LEAD AREA: TIN-PLATING 1μm min.		
DESIGNED		K. Nagamura	UNDER PLATING: NICKEL 1μm min.		
CHECKED		'05.11.15	FINISH, REMARKS		
APPROVED		H. Okawa	APPROVED		
RELEASED		'05.11.15	RELEASED		
DRAWING NO.		EDC3-084975-21	PART NO.		FX6-100P-0.8SV1(91)
SCALE		2:1	CODE NO.		CL576-0028-0-91
UNITS		mm	FORM NO.		8
HIROSE ELECTRIC CO., LTD			FORM NO.		229

TO

COUNT	DESCRIPTION OF REVISIONS	BY	CHKD	DATE	COUNT	DESCRIPTION OF REVISIONS	BY	CHKD	DATE
△				..	△				..
△				..	△				..
△				..	△				..



NOTE 1 THE DIMENSIONS IN PARENTHESSES ARE FOR REFERENCE.  
 2 ONE TUBE CONSISTS OF 11 PIECES.  
 3 REMOVE THE VACUUM PICK-UP TAPE AFTER MOUNTING THE CONNECTOR.

NO.	MATERIAL	FINISH, REMARKS	NO.	MATERIAL	FINISH, REMARKS
2	PVC	(STOPPER)	4	POLYIMIDE	(TAPE FOR VACUUM PICK-UP)
1	PVC	(TUBE)	3		(CONNECTOR)

CODE NO. (OLD)	CL	DRAWN	DESIGNED	CHECKED	APPROVED	RELEASED
		T. YANAGISAWA	N. Nakamura	N. Nakamura	H. Okawa	
		'05.11.15	'05.11.15	'05.11.15	'05.11.15	

DRAWING NO.	PART NO.
EDC3-084975-21	FX6-100P-0.8SV1(91)

SCALE	UNITS	CODE NO.
2:1	mm	CL576-0028-0-91

DETAIL FOR TAPE FOR VACUUM PICK-UP ( 5 : 1 )

TO	