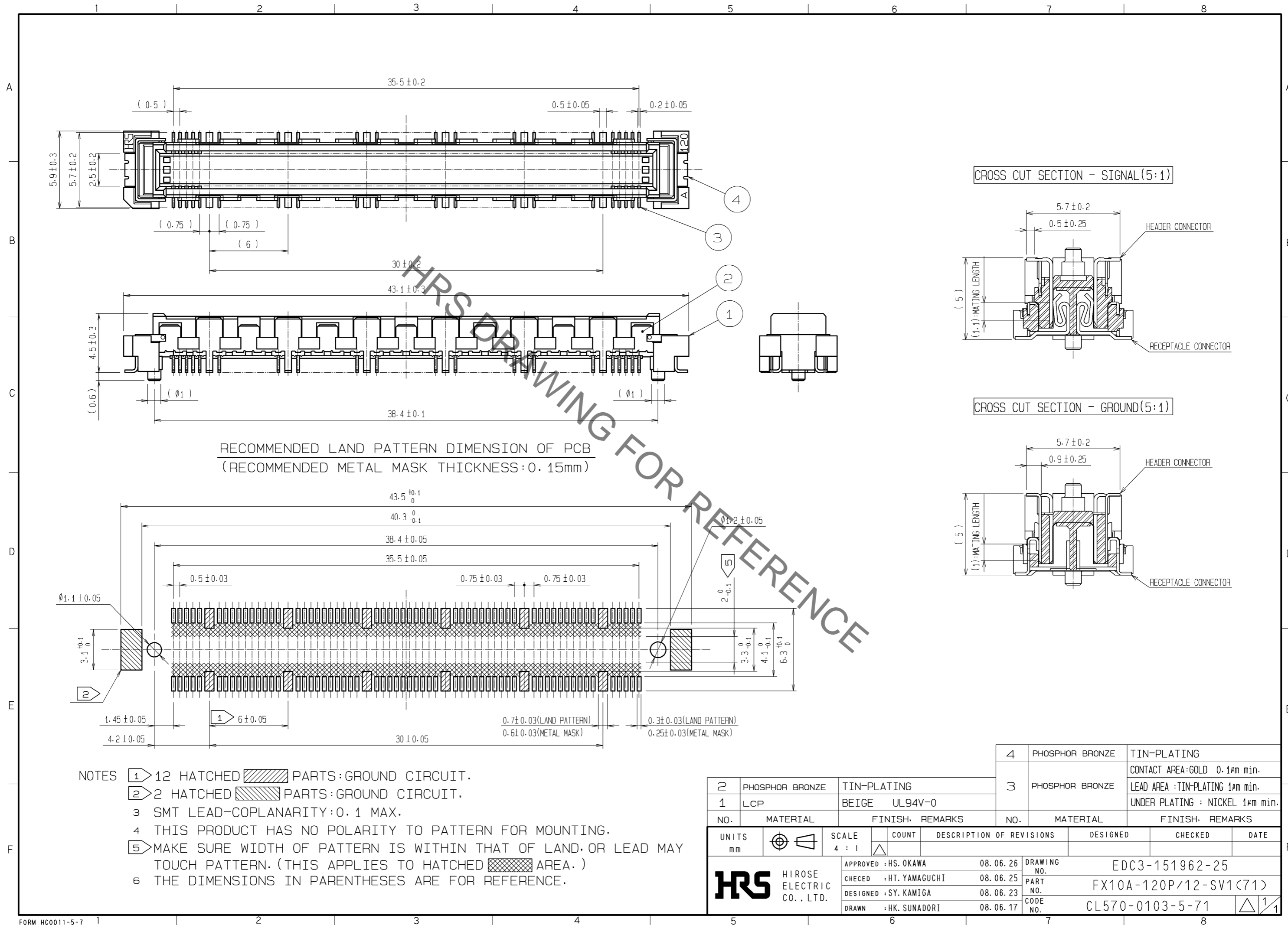


May.1.2023 Copyright 2023 HIROSE ELECTRIC CO., LTD. All Rights Reserved.  
 In case of consideration for using Automotive equipment / device which demand high reliability, kindly contact our sales window correspondents.



NO.	MATERIAL	FINISH	REMARKS	NO.	MATERIAL	FINISH	REMARKS
2	PHOSPHOR BRONZE	TIN-PLATING		3	PHOSPHOR BRONZE	TIN-PLATING	CONTACT AREA: GOLD 0.1μm min.
1	LCP	BEIGE UL94V-0				UNDER PLATING: NICKEL 1μm min.	
4	PHOSPHOR BRONZE	TIN-PLATING					

UNITS	SCALE	COUNT	DESCRIPTION OF REVISIONS	DESIGNED	CHECKED	DATE
mm	4:1	△				
APPROVED: HS. OKAWA			08.06.26	DRAWING NO. EDC3-151962-25		
CHECKED: HT. YAMAGUCHI			08.06.25	PART NO. FX10A-120P/12-SV1(71)		
DESIGNED: SY. KAMIGA			08.06.23	CODE NO. CL570-0103-5-71		
DRAWN: HK. SUNADORI			08.06.17	△ 1/1		