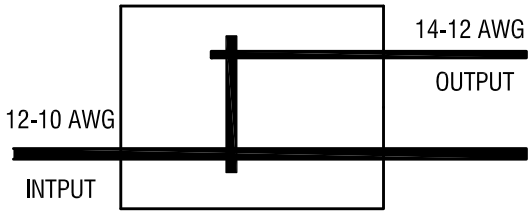
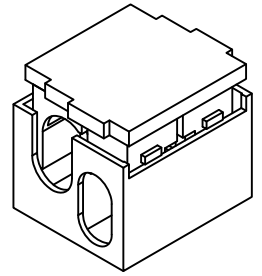


THIS DOCUMENT IS THE PROPERTY OF KEYSTONE ELECTRONICS CORP. AND SHALL NOT BE REPRODUCED, DISTRIBUTED OR USED AS A BASIS FOR MANUFACTURE WITHOUT PRIOR WRITTEN PERMISSION FROM KEYSTONE ELECTRONICS CORP.

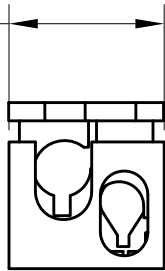
SCHEMATIC



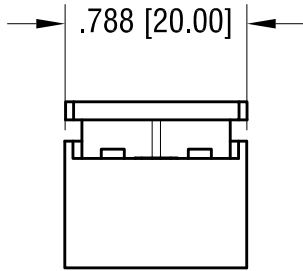
ACTUAL SIZE:



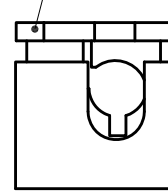
.670 [17.00]



.788 [20.00]



COLOR CODE:
ORANGE



*.550 [14.00]

NOTE:

1. INSULATION: MAT'L- POLYCARBONATE, LEXAN UL 94V-0
2. CONTACT: MAT'L- COPPER ALLOY
FINISH- TIN PLATE, OVER NICKEL PLATE
3. FOR WIRE: SOLID WIRE
WIRE SIZE: 12 AWG MIN. - 10 AWG MAX., INPUT
14 AWG MIN. - 12 AWG MAX., OUTPUT
4. RATED VOLTAGE 300V
RATED CURRENT: 25A

* HEIGHT OF CLOSED CONNECTOR

KEYSTONE ELECTRONICS CORP.

www.keyelco.com • NEW HYDE PARK, NY 11040 • Tel (516) 328-7500

PART NAME

T - SERIES WIRE CONNECTOR

MATERIAL

AS NOTED

FINISH

AS NOTED

DRN BY

NT

DATE

1.06.17

APP'D

RH

SCALE

1.2X

TOLERANCES

INCH [MM]

DECIMAL ±.010 [±0.25]

ANGULAR ± 1°

UNLESS OTHERWISE SPECIFIED

CODE

C

DWG NO.

8382

10.13.22 PARTS ARE NO LONGER UL LISTED
CHANGE AS PER ECN 22-160

A

REV.

DATE

DESCRIPTION