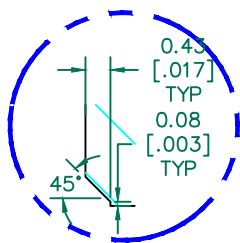
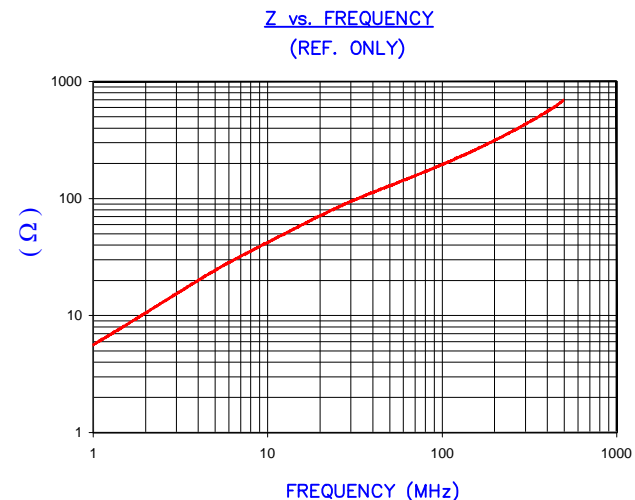


SEE DETAIL "A"
SECTION A-A



DETAIL "A"
CHAMFER
SCALE=6:1

IMPEDANCE (Z)			
Frequency	25 MHz	100 MHz	300 MHz
Nominal (REF)	85 Ω	191 Ω	410 Ω
Minimum	- Ω	153 Ω	- Ω



AGILENT E4991A Impedance/Material Analyzer
HP 16092A Test Fixture, REF # 3013

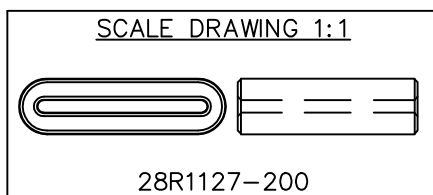
FERRITE CORE DIMENSIONS (SPEC):mm[Inches]

A	<u>28.58 [1.125]</u>	+	<u>0.51 [.020]</u>
B	<u>23.50 [.925]</u>	+	<u>0.51 [.020]</u>
C	<u>24.89 [.980]</u>	+	<u>0.50 [.020]</u>
D	<u>7.70 [.303]</u>	+	<u>0.51 [.020]</u>
E	<u>1.70 [.067]</u>	+	<u>0.51 [.020]</u>
		-	<u>0.38 [.015]</u>

WEIGHT/1000 20.56 kgs [45.33 Lbs]

NOTES: UNLESS OTHERWISE SPECIFIED

1. COSMETIC SPECIFICATION REFER TO WI-QA-038.



DIMENSIONS ARE IN mm (INCHES).				This print is the property of Laird Tech. and is loaned in confidence subject to return upon request and with the understanding that no copies shall be made without the written consent of Laird Tech. All rights to design or invention are reserved.			
REV	DESCRIPTION	DATE	INT				
J	UPDATE COMPANY LOGO	01/02/13	QU	PROJECT/PART NUMBER: <u>28R1127-200</u> DATE: 02/21/96 SCALE: 2 : 1 CAD # 28R1127-200-J TOOL # R1127 MATERIAL: FERRITE			
H	UPDATE Z SPEC AND COMPANY LOGO	07/31/07	JRK				
G	CHANGE TOLERANCE ON B DIMENSION	12/16/05	JRK				
F	UPDATE MIN Z SPEC@100 Mhz, ADD REF #	01/29/04	JRK				
E	UPDATE ELEC SPECS & CURVE, UPDATE FORMAT, REM NOTE 1, CHG E TOLS	02/25/03	JRK				
D	UPDATE TO CNZ FORMAT ADD Z CURVE CHG TOLS ON C DIM, COR DETAIL A	06/20/02	JRK	REV	J	DRAWN BY:	BAC