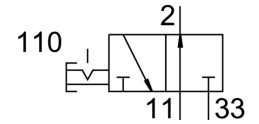


# On off valve HE-G1-LO

Part number: 197136

FESTO



## Data sheet

Feature	Value
Structural design	Piston gate valve
Actuation type	Manual
Sealing principle	Soft
Exhaust air function	Without flow control option
Manual override	None
Symbol	00991672
Valve function	3/2, bistable
Operating pressure	1 bar ... 10 bar
C value	38.47 l/sbar
b-value	0.47
Standard nominal flow rate	10000 l/min
Operating medium	Compressed air as per ISO 8573-1:2010 [7:4:4]
Corrosion resistance class (CRC)	3 - High corrosion stress
LABS (PWIS) conformity	VDMA24364-B1/B2-L
Temperature of medium	-10 °C ... 60 °C
Ambient temperature	-10 °C ... 60 °C
Type of mounting	Line installation With through-hole
Mounting position	Any
Flow direction	Non-reversible
Product weight	1000 g
Pneumatic connection 1	G1
Pneumatic connection 2	G1
Pneumatic connection 3	G1
Seals material	NBR TPE-U(PU)
Housing material	Die-cast aluminum PBT