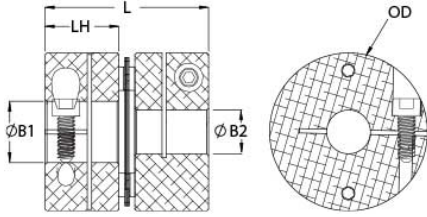




DCS36-1 1/4"-16MM-A

Ruland DCS36-1 1/4"-16MM-A, 1 1/4" x 16mm Single Disc Coupling, Aluminum, Clamp Style, 2.250" (57.2mm) OD, 2.313" (58.8mm) Length



Description

Ruland DCS36-1 1/4"-16MM-A is a clamp single disc coupling with 1.2500" x 16mm bores, 2.250" (57.2mm) OD, and 2.313" (58.8mm) length. It is zero-backlash and has a balanced design for reduced vibration at high speeds. The single disc design is comprised of two anodized aluminum hubs and two sets of thin stainless steel disc springs which can accommodate angular misalignment and axial motion, however does not allow for any parallel misalignment. DCS36-1 1/4"-16MM-A is lightweight and has low inertia making it well suited for applications with speeds up to 10,000 RPM. Hardware is metric and tests beyond DIN 912 12.9 standards for maximum torque capabilities. Ruland manufactures DCS36-1 1/4"-16MM-A to be torsionally rigid and an excellent fit for precise positioning stepper servo applications commonly found in semiconductor, solar, printing, machine tool, and test and measurement systems. It is machined from solid bar stock that is sourced exclusively from North American mills and RoHS3 and REACH compliant. DCS36-1 1/4"-16MM-A is manufactured in our Marlborough, MA factory under strict controls using proprietary processes.

Product Specifications

Bore (B1)	1.2500 in	Small Bore (B2)	16 mm
B1 Max Shaft Penetration	1.050 in (26.7 mm)	B2 Max Shaft Penetration	1.085 in (27.6 mm)
Outer Diameter (OD)	2.250 in (57.2 mm)	Bore Tolerance	+0.001 in / -0.000 in (+0.03 mm / -0.00 mm)
Length (L)	2.313 in (58.8 mm)	Hub Width (LH)	1.050 in (26.7 mm)
Recommended Shaft Tolerance	+0.0000 / -0.0005 " (+0.000 / -0.013 mm)	Forged Clamp Screw	M6
Screw Material	Alloy Steel	Hex Wrench Size	5.0 mm
Screw Finish	Black Oxide	Seating Torque	16 Nm
Number of Screws	2 ea	Dynamic Torque Reversing	112.5 lb-in (12.73 Nm)
Angular Misalignment	1.0°	Dynamic Torque Non-Reversing	225 lb-in (25.45 Nm)
Parallel Misalignment	0.000 in (0.00 mm)	Static Torque	450 lb-in (50.9 Nm)
Axial Motion	0.015 in (0.38 mm)	Torsional Stiffness	1000 lb-in/Deg (113.0 Nm/Deg)
Moment of Inertia	0.4988 lb-in ² (1.460 x 10 ⁻⁴ kg-m ²)	Maximum Speed	10,000 RPM
Full Bearing Support Required?	Yes	Zero-Backlash?	Yes
Balanced Design	Yes	Torque Wrench	TW:BT-4C-3/8-140
Recommended Hex Key	Metric Hex Keys	Material Specification	Hubs: 2024-T351 Aluminum Bar, Disc Springs: Type 302 Stainless Steel
Temperature	-40°F to 200°F (-40°C to 93°C)	Finish Specification	Sulfuric Anodized MIL-A-8625 Type II, Class 2 and ASTM B580 Type B Black Anodize
Manufacturer	Ruland Manufacturing	Country of Origin	USA
Weight (lbs)	0.676600	UPC	634529153062
Tariff Code	8483.60.8000	UNSPC	31163008

- Note 1** Stainless steel hubs are available upon request.
- Note 2** Torque ratings are at maximum misalignment.
- Note 3** Performance ratings are for guidance only. The user must determine suitability for a particular application.
- Note 4** Torque ratings for the couplings are based on the physical limitations/failure point of the disc springs. Under normal/typical conditions the hubs are capable of holding up to the rated torque of the disc springs. In some cases, especially when the smallest standard bores are used or where shafts are undersized, slippage on the

shaft is possible below the rated torque of the disc springs. Keyways are available to provide additional torque capacity in the shaft/hub connection when required. Please consult technical support for more assistance.

Prop 65

⚠WARNING This product can expose you to chemicals including Ethylene Thiourea and Nickel (metallic), known to the State of California to cause cancer, and Ethylene Thiourea known to the State of California to cause birth defects or other reproductive harm. For more information go to www.P65Warnings.ca.gov.

Installation Instructions

1. Align the bores of the DCS36-1 1/4"-16MM-A single disc coupling on the shafts that are to be joined and determine if the misalignment parameters are within the limits of the coupling. (*Angular Misalignment: 1.0°, Parallel Misalignment: 0.00 in (0.00 mm), Axial Motion: 0.015 in (0.38 mm)*)
 2. Fully tighten the M6 screw on the first hub to the recommended seating torque of 16 Nm using a 5.0 mm hex torque wrench.
 3. Before tightening the screw on the second hub, rotate the coupling by hand to allow it to reach its free length.
 4. Tighten the screw on the second hub to the recommended seating torque. Make sure the coupling remains axially relaxed and the misalignment angle remains centered along the length of the coupling.
 5. The shafts may extend into the relieved portion of the bore as long as it does not exceed the shaft penetration length of 1.050 in (26.7 mm) for bore 1 and 1.085 in (27.6 mm) for bore 2.
-