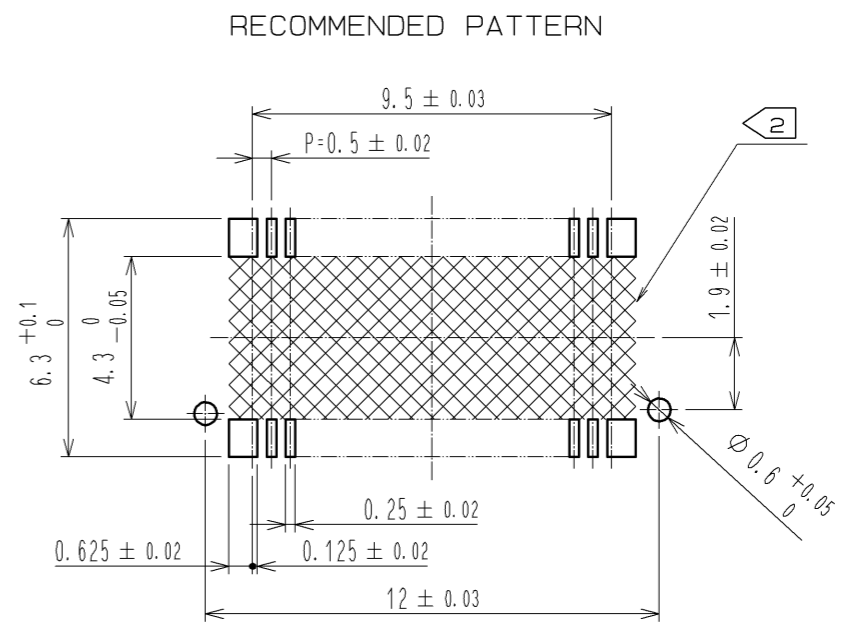
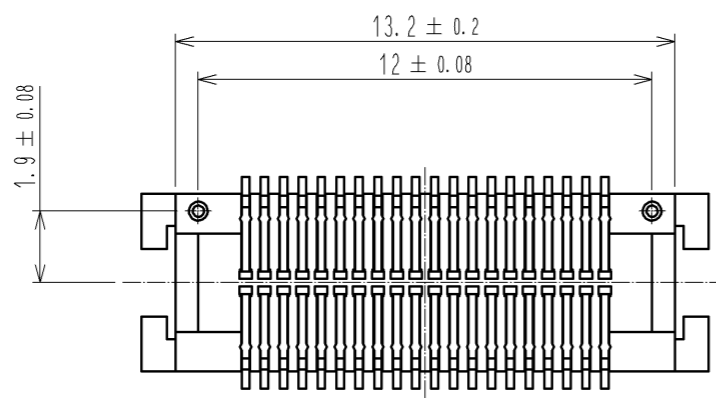
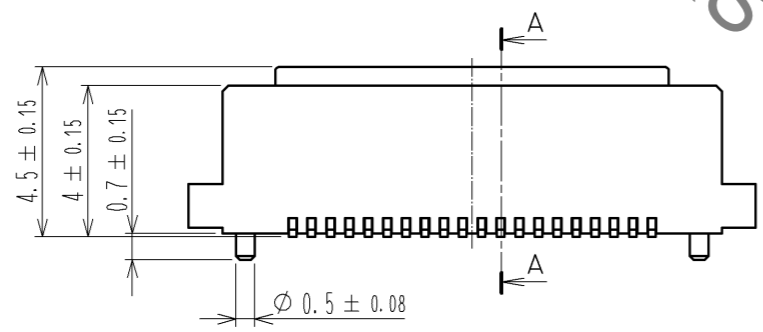
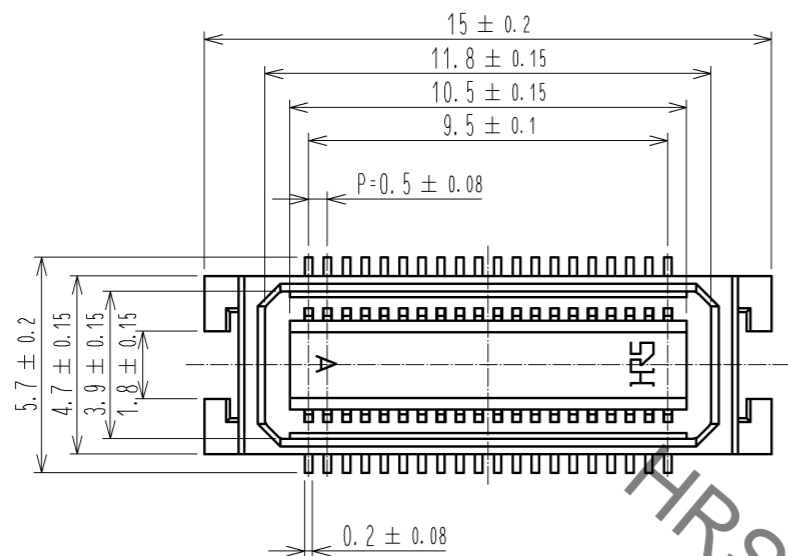
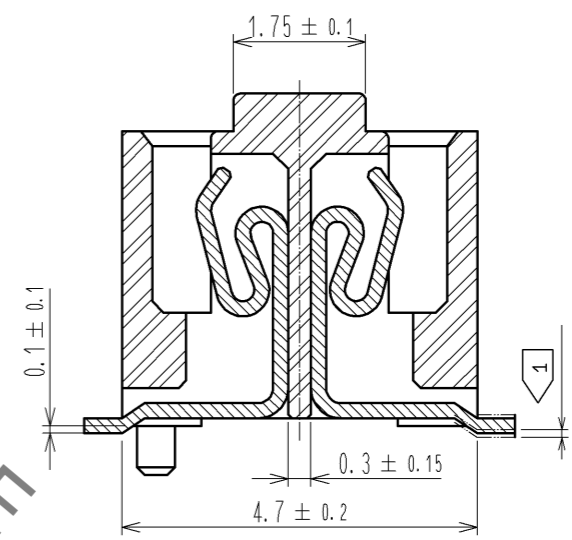


May.1.2023 Copyright 2023 HIROSE ELECTRIC CO., LTD. All Rights Reserved.
In case of consideration for using Automotive equipment / device which demand high reliability, kindly contact our sales window correspondents.



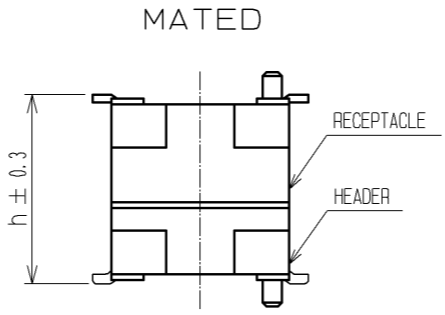
A-A (10 : 1)



HRS DRAWING FOR REFERENCE

- NOTES 1: LEAD CO-PLANARITY INCLUDE REINFORCED METAL FITTINGS SHALL BE 0.1mm MAX.
2: WHEN A PART MARKED WITH [Pattern] HAS A PATTERN BUT NO RESIST ON IT. TAKE CARE TO PREVENT THE CONNECTOR FROM TOUCHING IT.

MATED HIGHT (h)	RECEPTACLE NO.
HEADER NO.	DF17A(4.0)-40DS-0.5V(57)
DF17#(2.0)-40DP-0.5V(57)	6
DF17#(4.0)-40DP-0.5V(57)	8

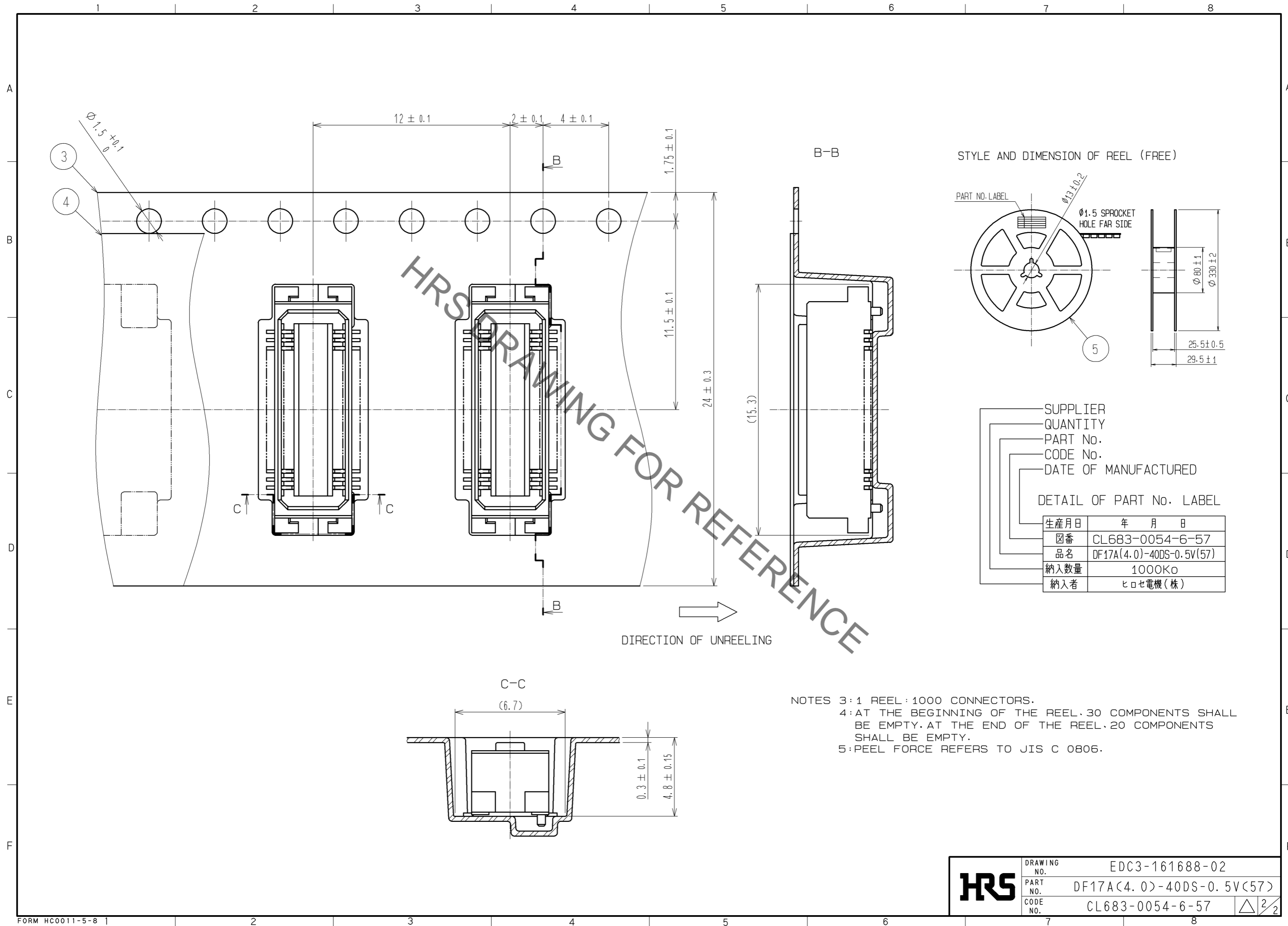


NO.	MATERIAL	FINISH . REMARKS	NO.	MATERIAL	FINISH . REMARKS
1	PHOSPHER BRONZE	CONTACT AREA:GOLD PLATED 0.1µm min LEAD AREA:TIN PLATED 1µm min UNDER PLATING:NICKEL PLATED 1µm min	5	PS	BLACK (PLASTIC REEL)
			4	POLYESTER	CLEAR (COVER TAPE)
			3	A-PET	CLEAR (EMBOSSED CARRIER TAPE)
			2	POLYAMIDE (PA6T)	WHITE BEIGE , UL94V-0

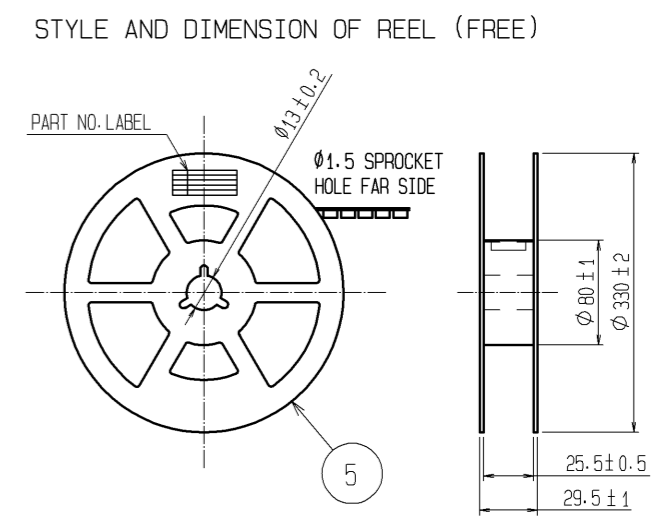
UNITS	SCALE	COUNT	DESCRIPTION OF REVISIONS	DESIGNED	CHECKED	DATE
mm	5 : 1	△	APPROVED : KH. IKEDA 08.11.20 CHECKED : TS. MIYAZAKI 08.11.20 DESIGNED : TY. YAMASAKI 08.11.19 DRAWN : TY. YAMASAKI 08.11.19			

DRAWING NO.	PART NO.	CODE NO.
EDC3-161688-02	DF17A(4.0)-40DS-0.5V(57)	CL683-0054-6-57

May.1.2023 Copyright 2023 HIROSE ELECTRIC CO., LTD. All Rights Reserved.
In case of consideration for using Automotive equipment / device which demand high reliability, kindly contact our sales window correspondents.



HRS DRAWING FOR REFERENCE



SUPPLIER
QUANTITY
PART No.
CODE No.
DATE OF MANUFACTURED

DETAIL OF PART No. LABEL

生産月日	年 月 日
図番	CL683-0054-6-57
品名	DF17A(4.0)-40DS-0.5V(57)
納入数量	1000K ϕ
納入者	ヒロセ電機(株)

DIRECTION OF UNREELING

NOTES 3: 1 REEL : 1000 CONNECTORS.
4: AT THE BEGINNING OF THE REEL, 30 COMPONENTS SHALL BE EMPTY. AT THE END OF THE REEL, 20 COMPONENTS SHALL BE EMPTY.
5: PEEL FORCE REFERS TO JIS C 0806.

HRS	DRAWING NO.	EDC3-161688-02
	PART NO.	DF17A(4.0)-40DS-0.5V(57)
	CODE NO.	CL683-0054-6-57
		\triangle 2/2