

**Description: 2012 2.4G&5GHz Diplexer**

**PART NUMBER: DPX2012LL76R2455A**

**Features:**

- Compact size : 2.0x1.2x0.5mm
- RoHS compliant

**Applications:**

- WLAN, 802.11a/b/g/n
- ISM Band

**ELECTRICAL SPECIFICATIONS**

DESCRIPTION	VALUE	
	Low Band	High Band
<b>Pass Band</b>	2400~2500MHz	4900~5950MHz
<b>Insertion loss</b>	0.65dB (Max)	0.65dB (Max)
<b>V.S.W.R</b> <b>/Return-Loss</b>	2.0(Max) /10.0dB(Min)	2.0(Max) /10.0dB(Min)
<b>Attenuation</b>	20dB(Min).@4800~5000MHz 20dB(Min).@7200~7500MHz	20dB (Min).@824~915 MHz 20dB (Min).@1800~2500 MHz 15dB (Min).@9800~11900 MHz
<b>Operating Temperature</b>	-40 ~ 85°C	

In the effort to improve our products, we reserve the right to make changes judged to be necessary.

CONFIDENTIAL AND PROPRIETARY INFORMATION

This document contains confidential and proprietary information of Pulse Electronics, Inc. (Pulse) and is protected by copyright, trade secret and other state and federal laws. Its receipt or possession does not convey any rights to reproduce, disclose its contents, or to manufacture, use or sell anything it may describe. Reproduction, disclosure or use without specific written authorization of Pulse is strictly forbidden.

For more information:



Pulse Worldwide Headquarters  
15255 Innovation Drive #100  
San Diego, CA 92128  
USA  
Tel:1-858-674-8100

Pulse/Larsen Antennas  
18110 SE 34<sup>th</sup> St Bldg 2 Suite 250  
Vancouver, WA 98683  
USA  
Tel: 1-360-944-7551

Europe Headquarters  
Pulse GmbH & Do, KG  
Zeppelinstrasse 15  
Herrenberg, Germany  
Tel: 49 7032 7806 0

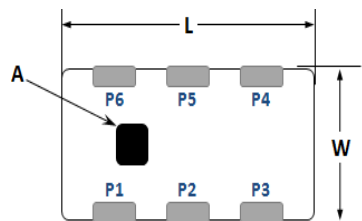
Pulse (Suzhou) Wireless Products Co, Inc.  
99 Huo Ju Road(#29 Bldg,4<sup>th</sup> Phase  
Suzhou New District  
Jiangsu Province, Suzhou 215009 PR China  
Tel: 86 512 6807 9998

Description: 2012 2.4G&5GHz Diplexer

PART NUMBER: DPX2012LL76R2455A

MECHANICAL DIMENSION

Outline



< Top View >

Termination

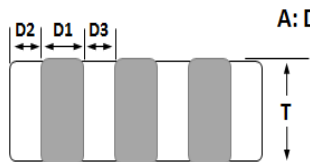
Terminal name	Function
P1	GND
P2	Common
P3	GND
P4	High band
P5	GND
P6	Low band

Mechanical

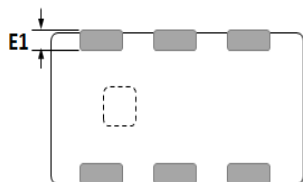
	Dimension
L (mm)	2.00±0.15
W (mm)	1.25±0.15
T (mm)	0.50±0.15
P1 (mm)	0.35±0.15
P2 (mm)	0.35±0.15
P3 (mm)	0.35±0.15
P4 (mm)	0.35±0.15
P5 (mm)	0.35±0.15
P6 (mm)	0.35±0.15
D1 (mm)	0.35±0.15
D2 (mm)	0.175±0.15
D3 (mm)	0.3±0.15
E1 (mm)	0.25±0.15

Dimension

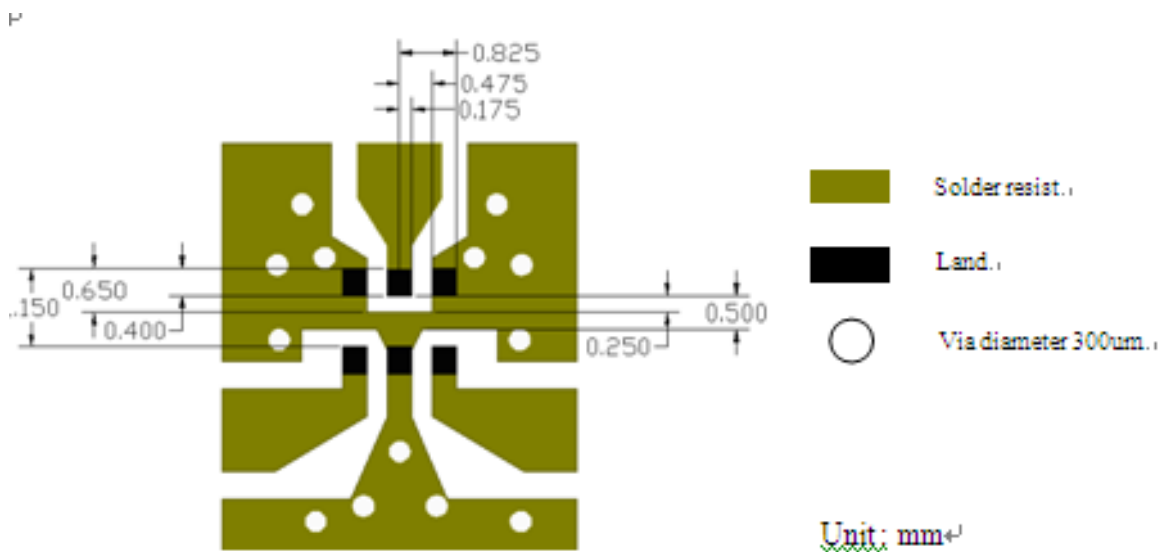
< Side View >



< Bottom View >



Reference design of EVB



Line width should be designed to match 50Ω characteristic impedance, depending on PCB material and thickness.

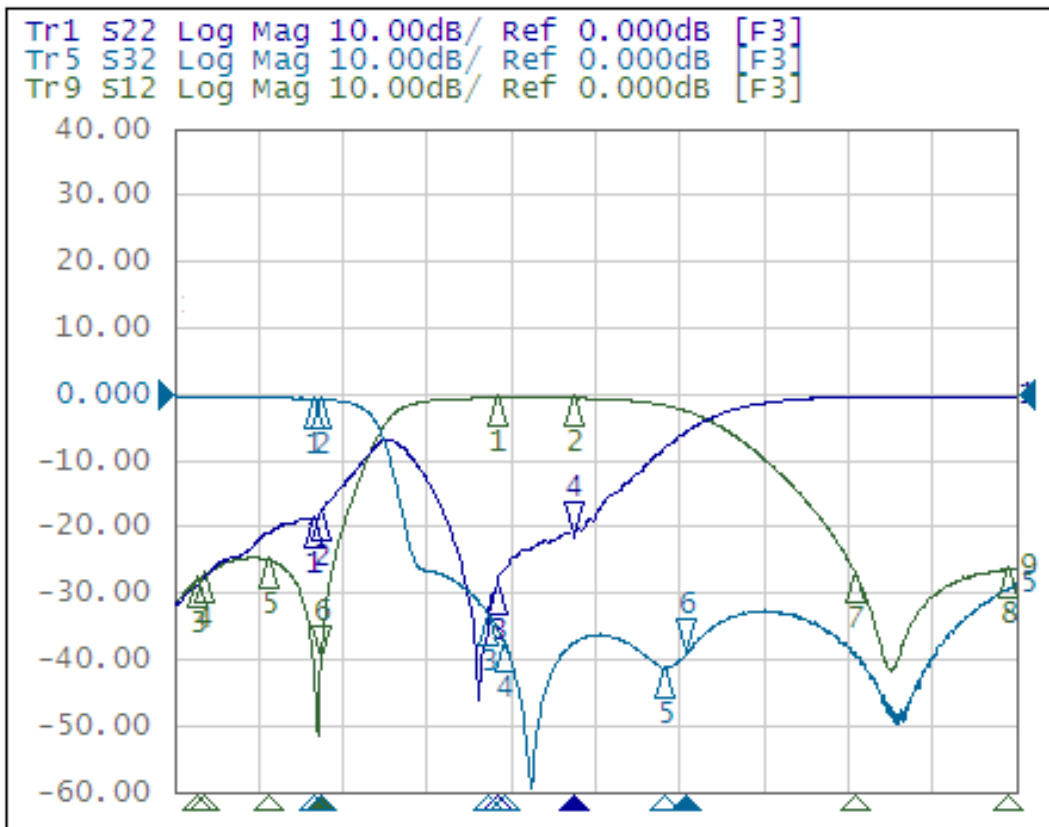
In the effort to improve our products, we reserve the right to make changes judged to be necessary.  
CONFIDENTIAL AND PROPRIETARY INFORMATION

This document contains confidential and proprietary information of Pulse Electronics, Inc. (Pulse) and is protected by copyright, trade secret and other state and federal laws. Its receipt or possession does not convey any rights to reproduce, disclose its contents, or to manufacture, use or sell anything it may describe. Reproduction, disclosure or use without specific written authorization of Pulse is strictly forbidden.

**Description: 2012 2.4G&5GHz Diplexer**

**PART NUMBER: DPX2012LL76R2455A**

**ELECTRICAL PERFORMANCES**



- Measured on Agilent E5071C Network Analyzer
- Common port: Port 2 (Return loss S22)
- Low band port: Port 3 (Low band insertion loss S32, and attenuation at high band)
- High band port: Port 1 (High band insertion loss S12, and attenuation at low band)

Frequency Characteristics

**Description:** 2012 2.4G&5GHz Diplexer

**PART NUMBER:** DPX2012LL76R2455A

### REVISION HISTORY

Revision	Date	Description
Version 1	Oct. 06, 2020	- New issue