

4

3

2

1

THIS DRAWING IS UNPUBLISHED.

RELEASED FOR PUBLICATION

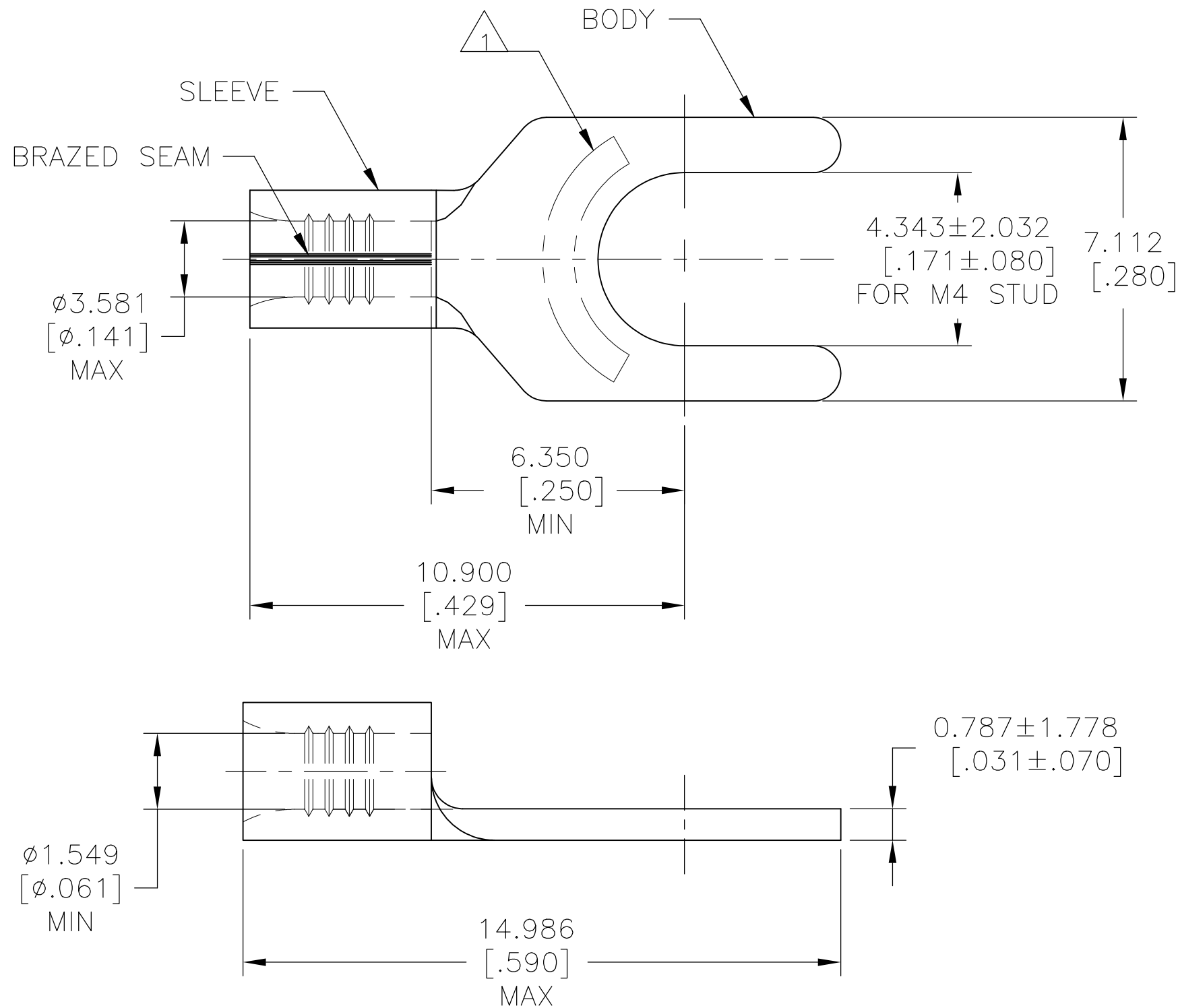
--

REVISIONS

© COPYRIGHT - TE Connectivity Ltd.

ALL RIGHTS RESERVED.

P	LTR	DESCRIPTION	DATE	DWN	APVD
	B2	REVISED PER ECO-09-020935	29AUG09	KK	AEG
	B3	REVISED PER ECO-17-008806	18APR2018	RS	DR



AMP
WIRE RANGE

22-16 AWG
SOLID OR STRANDED

1 STAMP "AMP 22-16*", APPROX AS SHOWN

2 NOTE DELETED

1000	LOOSE PIECE	130519
QTY	PACKAGE TYPE	PART NO

AMP INCORPORATED
CUSTOMER SERVICE SYSTEMS

MAX RECOMMENDED OPERATING TEMPERATURE:
170°C [338°F] MAX

THIS DRAWING IS A CONTROLLED DOCUMENT.

DWN JR RUTH 06OCT08

STE TE Connectivity Ltd.

FOR ADDITIONAL
PRODUCT INFORMATION OR
COPIES OF DRAWINGS
AND TECHNICAL DOCUMENTS

PRODUCT INFORMATION CENTER
1-800-522-6752

VOLTAGE RATING:

DIMENSIONS:
mm [INCHES]

TOLERANCES UNLESS
OTHERWISE SPECIFIED:

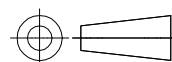
CHK T MICHIELUTTI 06OCT08

NAME
TERMINAL, SPADE TONGUE,
SOLISTRAND
WIRE SIZE: 22-16 AWG

FOR APPLICATION
TOOLING INFORMATION

TOOLING ASSISTANCE CENTER
1-800-722-1111

CIRCULAR MIL AREA:
0.26-1.65mm² [509-3,260]
SOLID OR STRANDED



0 PLC ± -
1 PLC ± -
2 PLC ± -
3 PLC ± 0.127[.005]
4 PLC ± -
ANGLES ± -

APVD T MICHIELUTTI 06OCT08

PRODUCT SPEC

APPLICATION SPEC

SIZE CAGE CODE DRAWING NO RESTRICTED TO

FOR ORDER ENTRY
1-800-526-5142

THIS DRAWING IS A CONTROLLED DOCUMENT FOR
AMP INCORPORATED. IT IS SUBJECT TO CHANGE
AND THE CONTROLLING ENGINEERING ORGANIZATION
SHOULD BE CONTACTED FOR THE LATEST REVISION.

MATERIAL
COPPER PER ASTM B-152

FINISH
TIN PL PER ASTM B545

WEIGHT

A3 00779 C-130519

CUSTOMER DRAWING

SCALE 8:1 SHEET 1 OF 1 REV B3