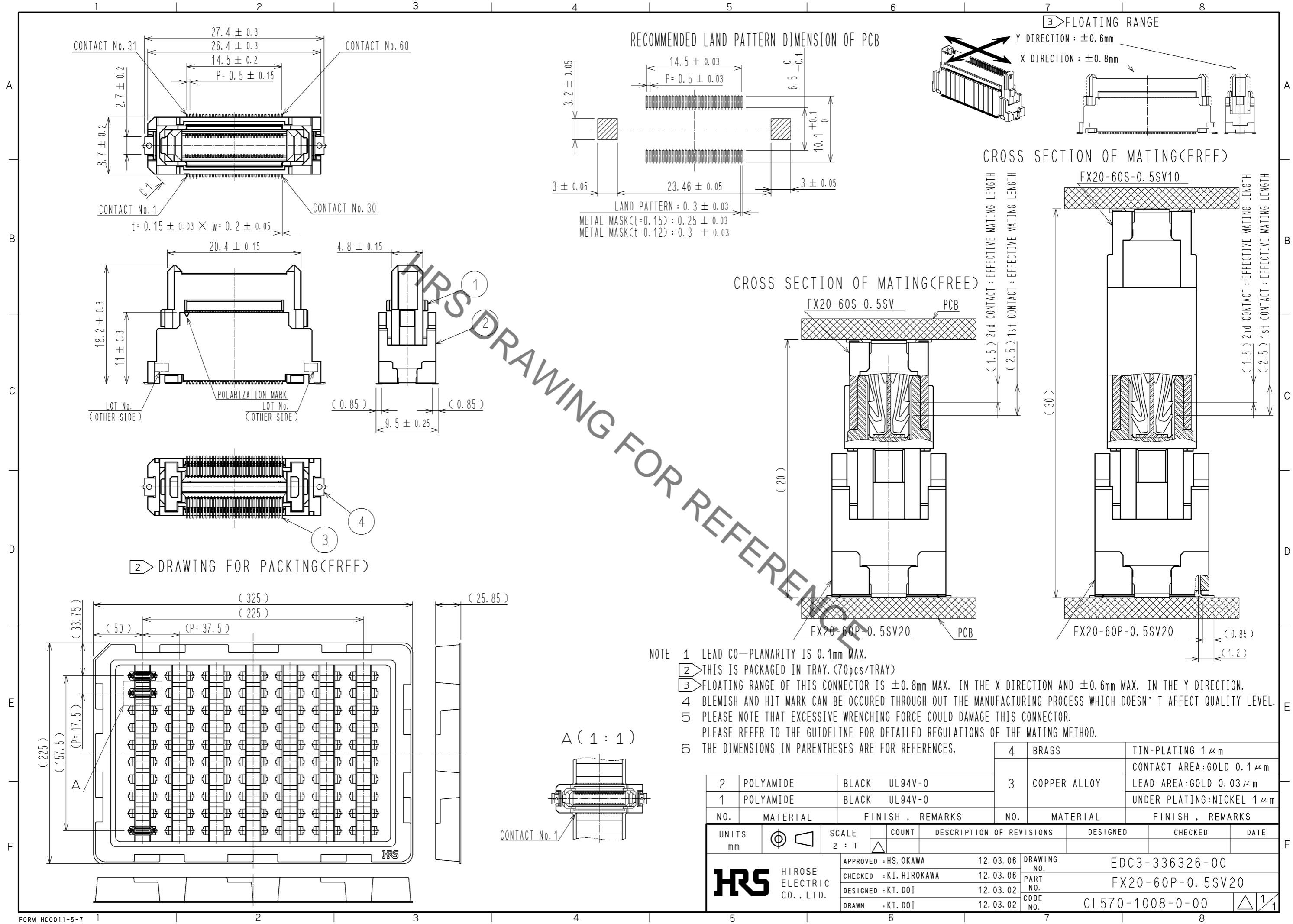


May.1.2023 Copyright 2023 HIROSE ELECTRIC CO., LTD. All Rights Reserved.
 In case of consideration for using Automotive equipment / device which demand high reliability, kindly contact our sales window correspondents.



- NOTE
- 1 LEAD CO-PLANARITY IS 0.1mm MAX.
 - 2 THIS IS PACKAGED IN TRAY. (70pcs/TRAY)
 - 3 FLOATING RANGE OF THIS CONNECTOR IS ±0.8mm MAX. IN THE X DIRECTION AND ±0.6mm MAX. IN THE Y DIRECTION.
 - 4 BLEMISH AND HIT MARK CAN BE OCCURED THROUGH OUT THE MANUFACTURING PROCESS WHICH DOESN' T AFFECT QUALITY LEVEL.
 - 5 PLEASE NOTE THAT EXCESSIVE WRENCHING FORCE COULD DAMAGE THIS CONNECTOR. PLEASE REFER TO THE GUIDELINE FOR DETAILED REGULATIONS OF THE MATING METHOD.
 - 6 THE DIMENSIONS IN PARENTHESES ARE FOR REFERENCES.

2	POLYAMIDE	BLACK	UL94V-0	4	BRASS	TIN-PLATING 1 μm
1	POLYAMIDE	BLACK	UL94V-0	3	COPPER ALLOY	CONTACT AREA:GOLD 0.1 μm LEAD AREA:GOLD 0.03 μm UNDER PLATING:NICKEL 1 μm
NO.	MATERIAL	FINISH	REMARKS	NO.	MATERIAL	FINISH . REMARKS
UNITS mm				SCALE 2 : 1		
HRS HIROSE ELECTRIC CO., LTD.				APPROVED : HS. OKAWA 12.03.06		
				CHECKED : KI. HIROKAWA 12.03.06		
				DESIGNED : KT. DOI 12.03.02		
				DRAWN : KT. DOI 12.03.02		
				DRAWING NO. EDC3-336326-00		
				PART NO. FX20-60P-0.5SV20		
				CODE NO. CL570-1008-0-00		
				DATE		

