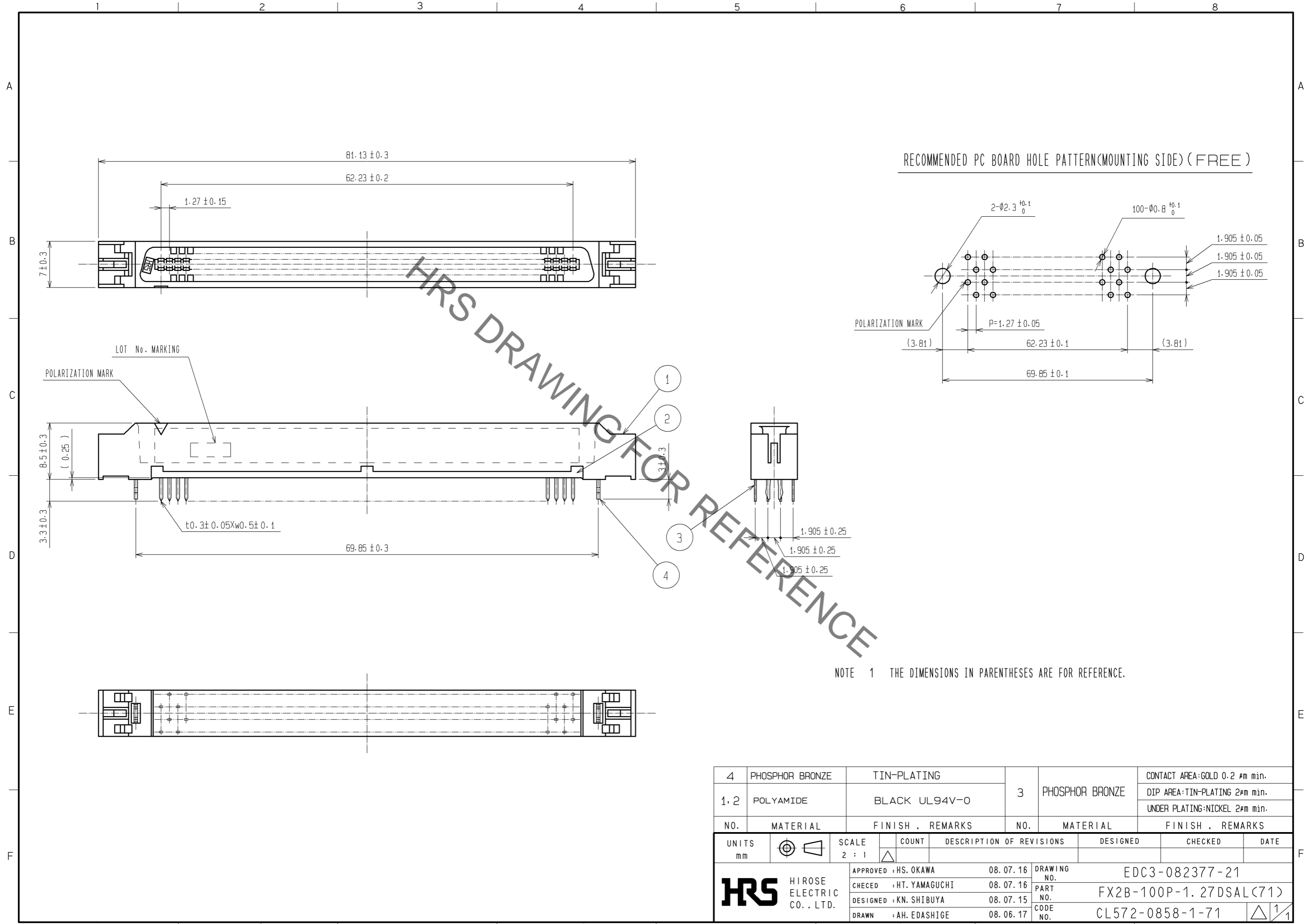


May.1.2023 Copyright 2023 HIROSE ELECTRIC CO., LTD. All Rights Reserved.
In case of consideration for using Automotive equipment / device which demand high reliability, kindly contact our sales window correspondents.



HRS DRAWING FOR REFERENCE

NOTE 1 THE DIMENSIONS IN PARENTHESES ARE FOR REFERENCE.

4	PHOSPHOR BRONZE	TIN-PLATING							CONTACT AREA:GOLD 0.2 #m min.	
1,2	POLYAMIDE	BLACK UL94V-0		3	PHOSPHOR BRONZE				DIP AREA:TIN-PLATING 2#m min.	
									UNDER PLATING:NICKEL 2#m min.	
NO.	MATERIAL	FINISH . REMARKS	NO.	MATERIAL	FINISH . REMARKS					
UNITS		SCALE	COUNT	DESCRIPTION OF REVISIONS		DESIGNED	CHECKED	DATE		
mm		2 : 1								
HRS		HIROSE ELECTRIC CO., LTD.	APPROVED : HS. OKAWA	08.07.16	DRAWING NO.	EDC3-082377-21				
			CHECED : HT. YAMAGUCHI	08.07.16	PART NO.	FX2B-100P-1.27DSAL(71)				
			DESIGNED : KN. SHIBUYA	08.07.15	CODE NO.	CL572-0858-1-71				
			DRAWN : AH. EDASHIGE	08.06.17						