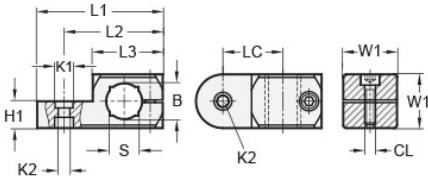




MT15-CCSWH-25-A

Ruland Swivel Clamp Joint, Swivel Thru Hole 6.5mm, Clamp Width 25mm, Thru Hole 15mm, Clamp Screw M6, L 62mm, Aluminum




Description

Ruland MT15-CCSWH-25-A is a swivel clamp joint with a thru hole for 15mm round or 12mm square tube, M6 clamp screw, 12.5mm base height, 25mm width and height, and 62mm overall length. It is designed to fit with MT15:16 swivel clamp bases, MT15 clamp connectors and mounting blocks, and MT15 round and square tubes. When combined with a swivel bases or attachment clamp joints, it is an ideal articulating mounting solution for screens, sensors, reflectors, plexiglass machine guards, and other components that require frequent adjustments. The horizontal bore is transverse to the swivel axis. An MT15:16-SWALK-M6-25 adjustable clamping handle can be used to join it to other Ruland swivel components or tubes for rapid repositioning without the use of tools. This part is aluminum with a matte tumbled finish for use in most industrial environments. MT15-CCSWH-25-A is manufactured by Otto Ganter, inventoried by Ruland, and RoHS3 compliant.

Product Specifications

Thru Hole Diameter B	15 mm	Thru Hole Tolerance	+0.11/-0 mm
Square Thru Hole S	12 mm	Counterbore 1 Diameter K1	10 mm
Counterbore 2 Diameter K2	6.5 mm	Clamp Screw CL	M6
Overall Length L1	62 mm	Hub Length LH	36 mm
Edge To Center Of Counterbore L2	49.5 mm	Center To Center LC	29 mm
Width & Height W1	25 mm	Base Height H1	12.5 mm
Material Specification	Aluminum	Manufacturer	JW Winco/ Otto Ganter
Country of Origin	Germany	Weight (lbs)	0.143600
UPC	634529230473	Tariff Code	7609.00.0000
UNSPC	31162908		

Note 1 Performance ratings are for guidance only. The user must determine suitability for a particular application.

Prop 65  **WARNING** This product can expose you to the chemical Nickel (metallic), known to the State of California to cause cancer. For more information go to www.P65Warnings.ca.gov.