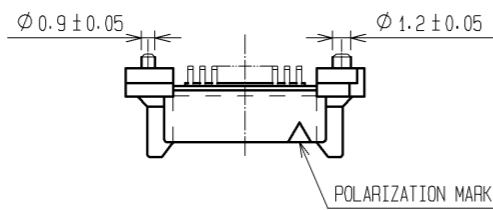
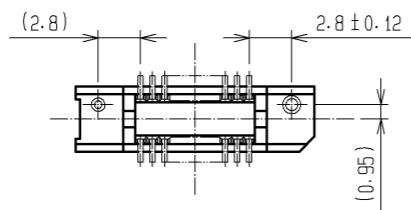
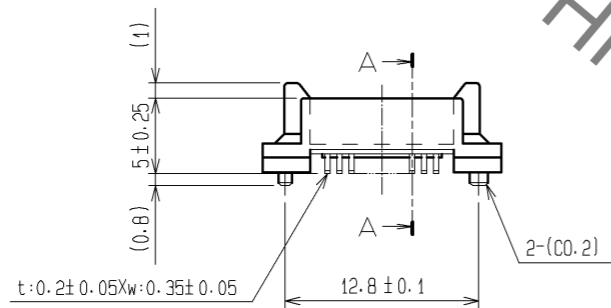
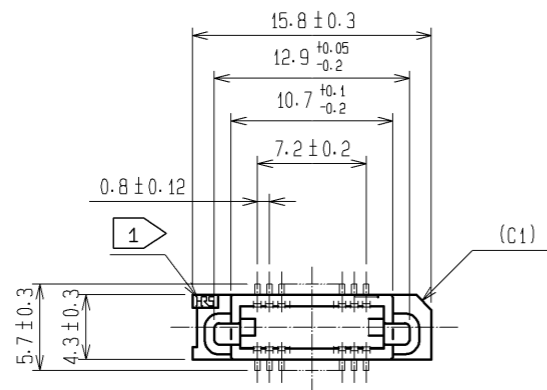
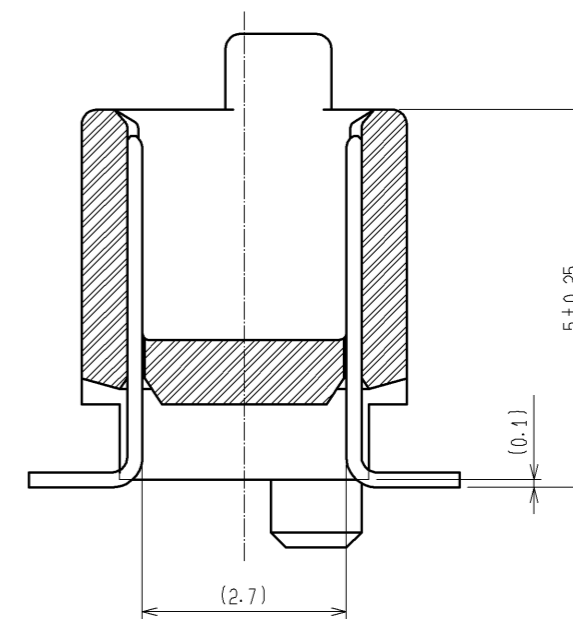


May.1.2023 Copyright 2023 HIROSE ELECTRIC CO., LTD. All Rights Reserved.
In case of consideration for using Automotive equipment / device which demand high reliability, kindly contact our sales window correspondents.

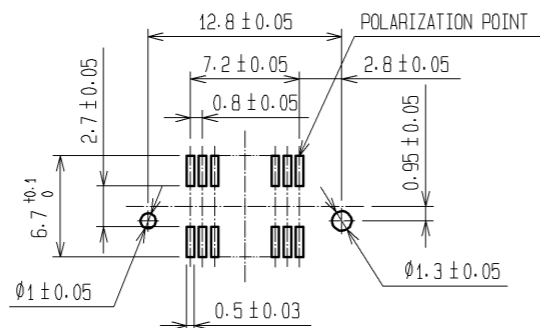


A-A (10:1)



- NOTE
- 1 HRS MARK SHALL BE OPTIONAL.
 - 2 LEAD CO-PLANARITY SHALL BE 0.1mm MAX.
 - 3 THE DIMENSIONS IN PARENTHESES ARE FOR REFERENCE.
 - 4 PACKING SHALL BE EMBOSSED CARRIER TAPE.
SEE NEXT PAGE FOR DETAILS.
 - 5 FOR MODIFICATION, ETC., PREVENTIVE HOLE FOR SINK MARK MAY BE ADDED ACCORDING TO CIRCUMSTANCES.

RECOMMENDED LAND PATTERN DIMENSION OF PCB (MOUNT SIDE)
(RECOMMENDED METAL MASK THICKNESS: 0.15mm) Δ

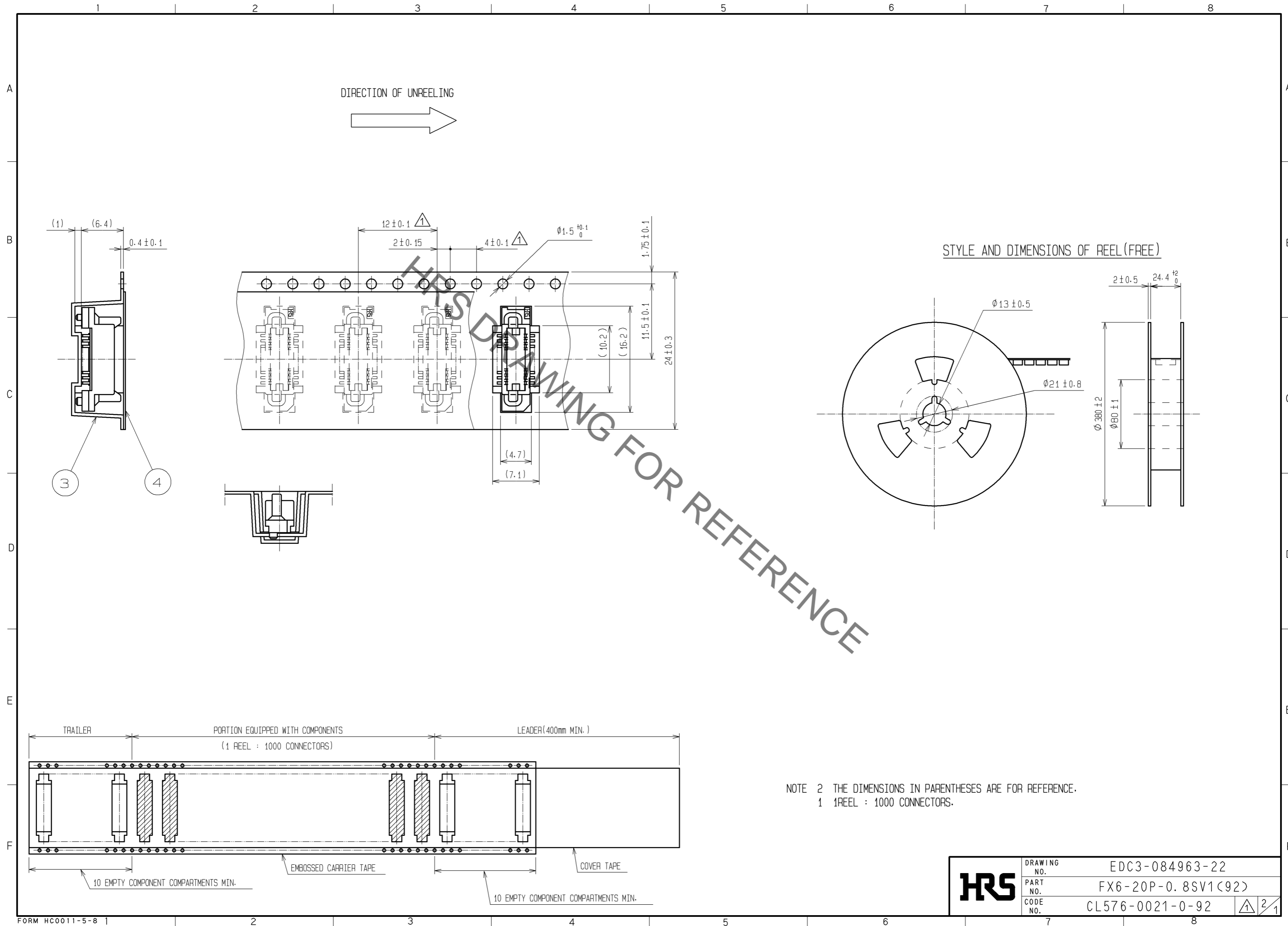


NO.	MATERIAL	FINISH, REMARKS	NO.	MATERIAL	FINISH, REMARKS
1	POLYPHENYLENE SULFIDE	LIGHT BROWN UL94V-0	2	PHOSPHOR BRONZE	CONTACT AREA: GOLD 0.1µm min. LEAD AREA: TIN-PLATING 1µm min. UNDER PLATING: NICKEL 1µm min.
3	POLYSTYRENE		4	POLYESTER	COVER TAPE
					EMBOSSED CARRIER TAPE

UNITS	SCALE	COUNT	DESCRIPTION OF REVISIONS	DESIGNED	CHECKED	DATE
mm	2:1	3	DIS-F-006187	Y.J. ASAO	HT. YAMAGUCHI	12.05.11

APPROVED	DATE	DRAWING NO.
HS. OKAWA	05.08.03	EDC3-084963-22
CHECKED	DATE	PART NO.
HS. OZAWA	05.08.02	FX6-20P-0.8SV1(92)
DESIGNED	DATE	CODE NO.
TK. YANAGISAWA	05.08.02	CL576-0021-0-92
DRAWN	DATE	
TK. YANAGISAWA	05.08.02	

May.1.2023 Copyright 2023 HIROSE ELECTRIC CO., LTD. All Rights Reserved.
 In case of consideration for using Automotive equipment / device which demand high reliability, kindly contact our sales window correspondents.



NOTE 2 THE DIMENSIONS IN PARENTHESES ARE FOR REFERENCE.
 1 1REEL : 1000 CONNECTORS.

HRS	DRAWING NO.	EDC3-084963-22	2/1
	PART NO.	FX6-20P-0.8SV1(92)	
	CODE NO.	CL576-0021-0-92	