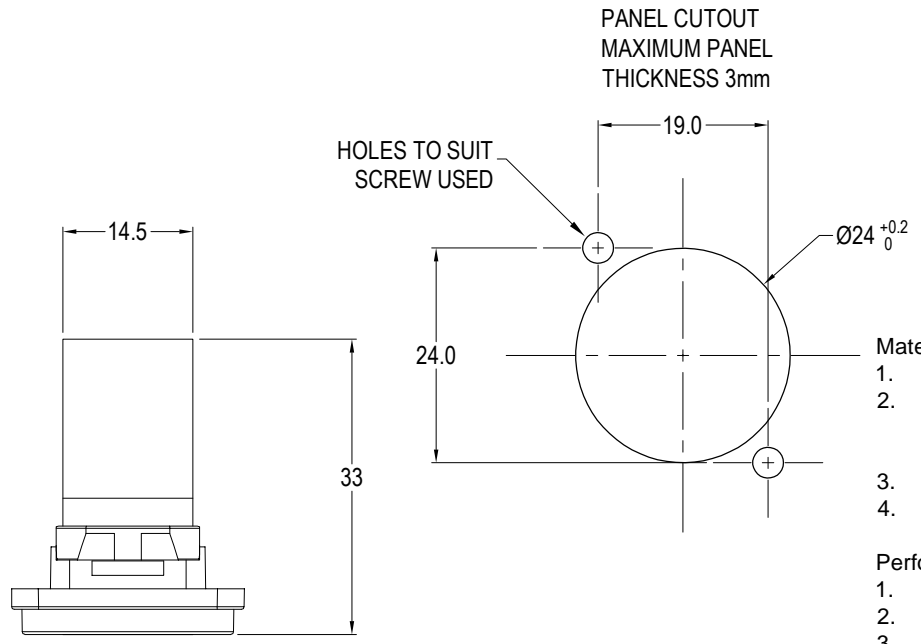
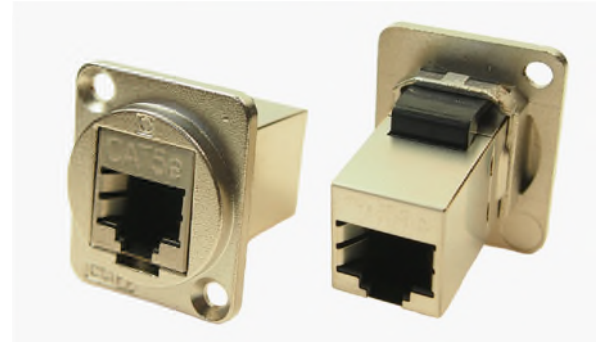


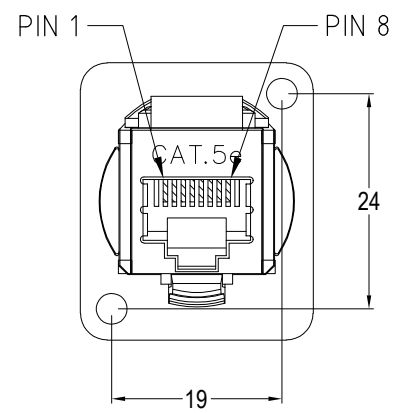
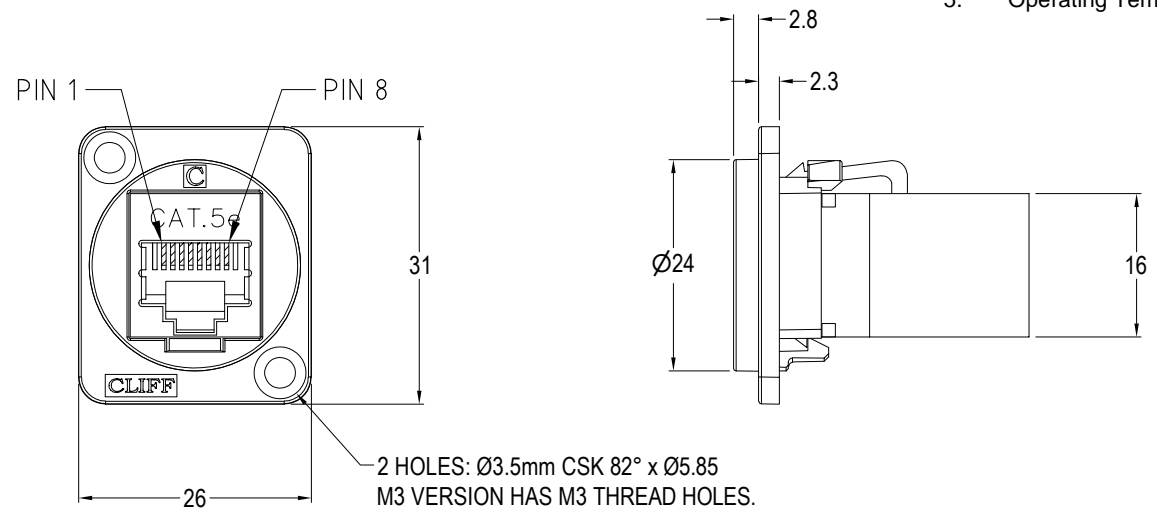
ISS.	AMEND	DATE
1	1st DRAWN	04/09/15
2	ADD M3 VARIANT	16/07/18
3	ADD MIN MAX TEMP	30/06/20
4	UPDATE MATERIALS	25/03/22



- Material:**
1. RJ45 In-Line Coupler: ABS UL94-V0
 2. RJ45 In-Line Coupler Contact: Phosphor Bronze, 3-50 micro inches gold plating over nickel plate.
 3. PCB: FR4
 4. Frame: Nickel plated zinc diecast

- Performance:**
1. T568A & T568B wiring.
 2. Meet ISO/IEC 11801 and EN50173
 3. Meet ANSI/TIA/EIA 568B.2
 4. Rating: 125VAC RMS 1.5A
 5. Operating Temperatures: Min -10°C Max +70°C

VARIANTS	
PART No.	HOLE DETAILS
CP30220SM	HOLE Ø3.50 x CSK 82° x Ø5.85
CP30220SM3	M3 HOLES



RoHS COMPLIANT
TOLERANCE NO DEC. PLACE ± 1 DEC. PLACE ± 2 DEC. PLACE ± HOLE Ø ± ANGLES ± UNLESS OTHERWISE STATED
DO NOT SCALE