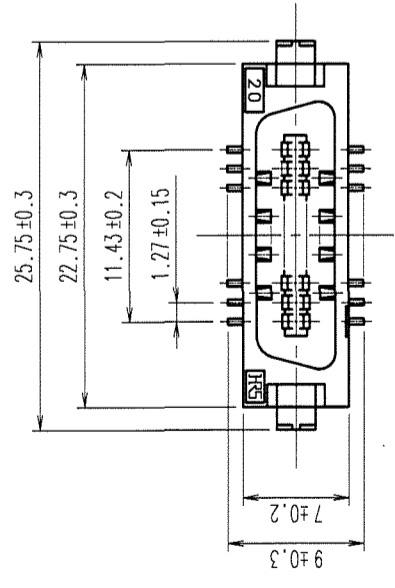
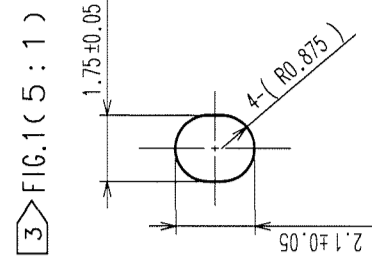
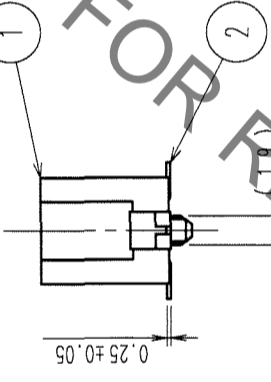
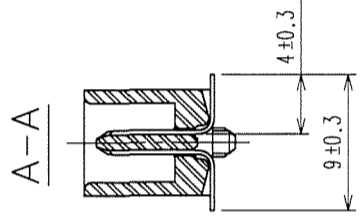
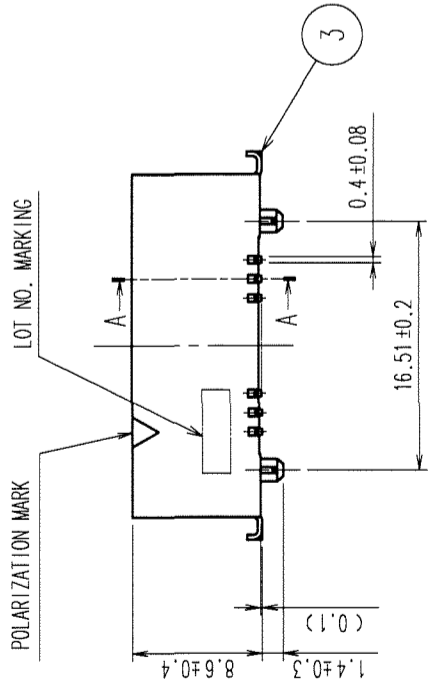
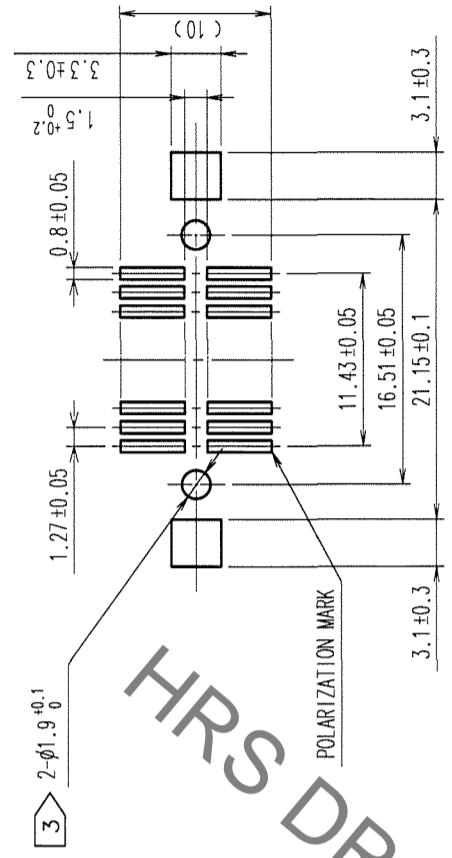


COUNT	DESCRIPTION OF REVISIONS	BY	CHKD	DATE	COUNT	DESCRIPTION OF REVISIONS	BY	CHKD	DATE
△					△				
△					△				
△					△				

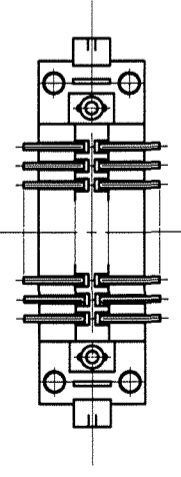
A B C D E F



RECOMMENDED LAND PATTERN DIMENSION OF PCB (MOUNTING SIDE)



- NOTES
- 1 LEAD CO-PLANARITY SHALL BE 0.15 MAX.
 - 2 THE DIMENSIONS IN PARENTHESES ARE FOR REFERENCE.
 - 3 IN CASE OF THE AUTOMATED MOUNTING, RECOMMENDED HOLE DIAMETER OF BOSS IS SHOWN IN FIG.1.



NO.	MATERIAL	FINISH, REMARKS	NO.	MATERIAL	FINISH, REMARKS
3	BRASS	TIN-PLATING	2	PHOSPHOR BRONZE	
1	PPS	LIGHT BROWN (UL94V-0)			

CONTACT AREA:	LEAD AREA:	UNDER PLATING:
GOLD 0.2μm min.	TIN-PLATING 2μm min.	NICKEL 2μm min.

CODE NO. (OLD)	CL	DRAWN	DESIGNED	CHECKED	APPROVED	RELEASED
		A. SUZUKAWA	Atakamura	(Suzuki)	H. H. Kawara	
		06.02.08	06.02.13	06.02.13	06.02.13	

DRAWING NO.	PART NO.
EDC3-082752-21	FX2-20P-1.27SVL(71)

SCALE	UNITS	CODE NO.
2:1	mm	CL572-2051-7-71

TO	
PCK	

HRS DRAWING FOR REFERENCE