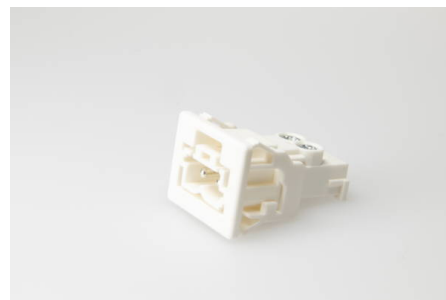




Connectors System AC 164 Panel Mounting

AC 164 EST/ 2 WS

plug, 2 pole, white, coding: 1 (mains), voltage rating: 250 V, current rating: 16 A, cross-section rating: 2.5 mm², wall thickness min.: 0.5 mm, wall thickness max.: 1.2 mm



Order Info

reference number (ref.no.)	148752
PU	100
EAN	4028012123957

Type

type	plug
number of poles	2 pole
clamping units per pole	1
colour	white
coding	1 (mains)
cross-section rating	2.5 mm ²
connection type	screw
protection against incorrect plugging	yes
latch	yes

Technical Data

voltage rating	250 V
current rating	16 A
impulse voltage rating	4.0 kV
insulating material	PA
contact material	brass
core cross-section min.	0.5 mm ²
core cross-section max.	2.5 mm ²
flammability rating	V-2
max. ambient temperature operation	70 °C
IP code	IP20
IP code when plugged	IP40
type of conductor solid	yes
type of conductor flexible	yes
type of conductor stranded	yes
stripping length	7.0 mm

assembly contact screw	PZ 1 / \cup 0,5 Nm
-------------------------------	----------------------

wall thickness min.	0.5 mm
----------------------------	--------

wall thickness max.	1.2 mm
----------------------------	--------

Approvals

acc. to EN 61535	Download PDF
-------------------------	------------------------------

acc. to UL	Download PDF
-------------------	------------------------------

Accessories

AC 164 VT 3/2 WS	149752
-------------------------	--------