

## Han 24Ex-F-c

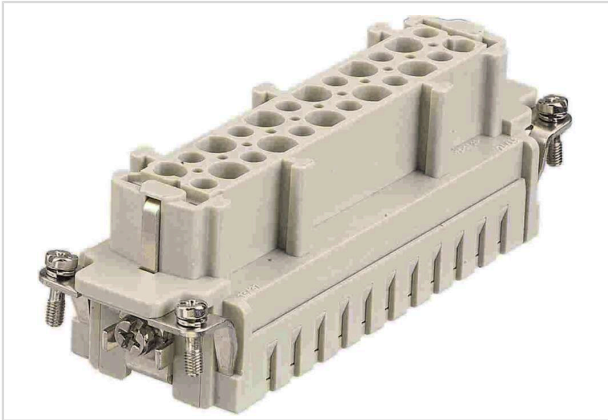


Image is for illustration purposes only. Please refer to product description.

|                    |   |
|--------------------|---|
| Part number        | 09 36 024 2702  |
| Specification      | Han 24Ex-F-c  |
| HARTING eCatalogue | <a href="https://b2b.harting.com/09360242702">https://b2b.harting.com/09360242702</a> |

### Identification

|          |                     |
|----------|---------------------|
| Category | Inserts             |
| Series   | Han <sup>®</sup> Ex |

### Version

|                    |   |
|--------------------|---|
| Termination method | Crimp termination   |
| Gender             | Female  |
| Size               | 24 B  |
| Number of contacts | 24  |
| PE contact         | Yes   |
| Details            | Please order crimp contacts separately.                                 |
| Details            | ATTENTION! Only to be used with Han <sup>®</sup> Ex hoods and housings! |

### Technical characteristics

|                         |                            |
|-------------------------|----------------------------|
| Conductor cross-section | 0.14 ... 4 mm <sup>2</sup> |
| Rated current           | 16 A                       |
| Rated voltage           | 90 V                       |
| Insulation resistance   | >10 <sup>10</sup> Ω        |
| Limiting temperature    | -20 ... +40 °C             |
| Mating cycles           | ≥500                       |

### Material properties

|                   |                        |
|-------------------|------------------------|
| Material (insert) | Polycarbonate (PC)     |
| Colour (insert)   | RAL 7032 (pebble grey) |



**Pushing Performance**  
Since 1945

## Material properties

|   |                              |
|---|------------------------------|
| Material flammability class acc. to UL 94 | V-0                          |
| RoHS                                      | compliant                    |
| ELV status                                | compliant                    |
| China RoHS                                | e                            |
| REACH Annex XVII substances               | Not contained                |
| REACH ANNEX XIV substances                | Not contained                |
| REACH SVHC substances                     | Not contained                |
| California Proposition 65 substances      | Yes                          |
| California Proposition 65 substances      | Lead<br>Nickel               |
| Fire protection on railway vehicles       | EN 45545-2 (2020-08)         |
| Requirement set with Hazard Levels        | R22 (HL 1-3)<br>R23 (HL 1-3) |

## Commercial data

|                                |   |
|--------------------------------|---|
| Packaging size                 | 1   |
| Net weight                     | 82 g  |
| Country of origin              | Germany   |
| European customs tariff number | 85366990  |
| GTIN                           | 5713140055001                                     |
| eCl@ss                         | 27440205 Contact insert for industrial connectors |