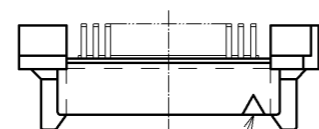
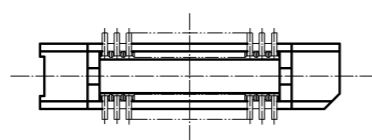
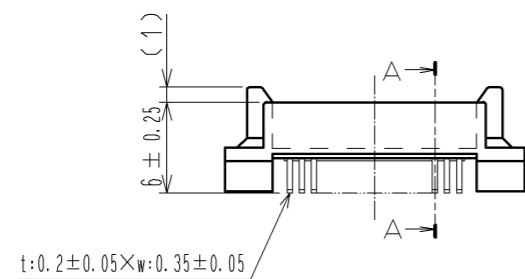
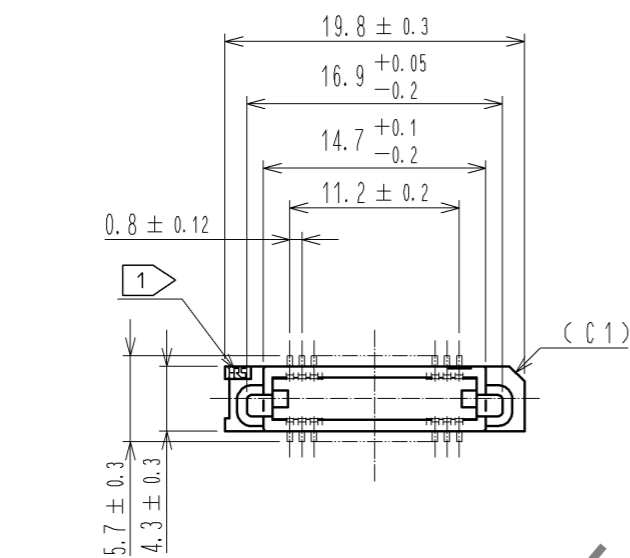
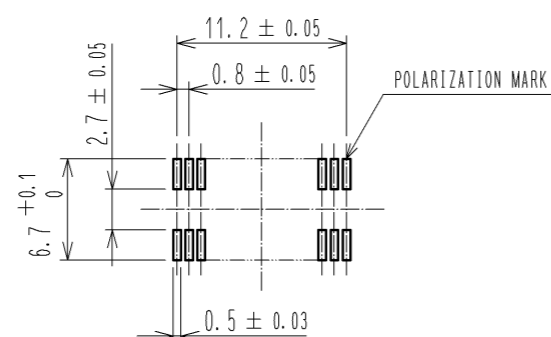


May.1.2023 Copyright 2023 HIROSE ELECTRIC CO., LTD. All Rights Reserved.
In case of consideration for using Automotive equipment / device which demand high reliability, kindly contact our sales window correspondents.



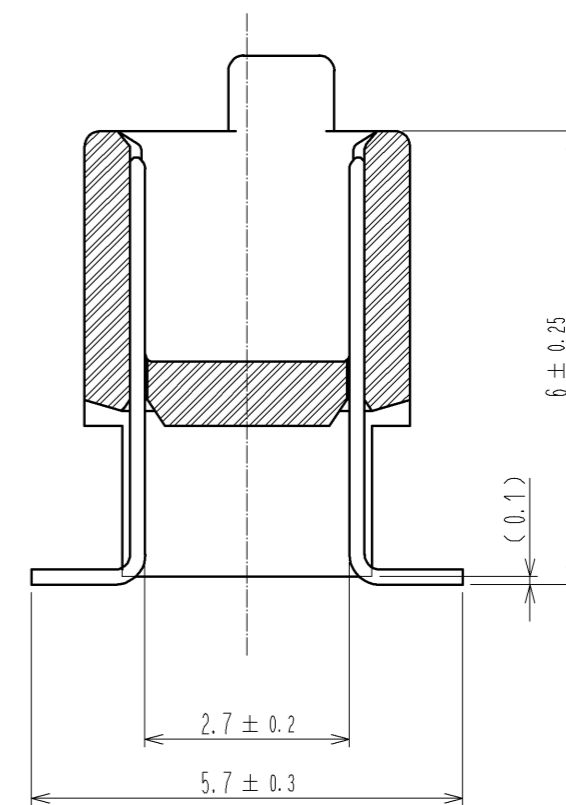
POLARIZATION MARK

RECOMMENDED LAND PATTERN DIMENSION OF PCB (MOUNTING SIDE)
(RECOMMENDED METAL MASK THICKNESS t=0.15)



HRS DRAWING FOR REFERENCE

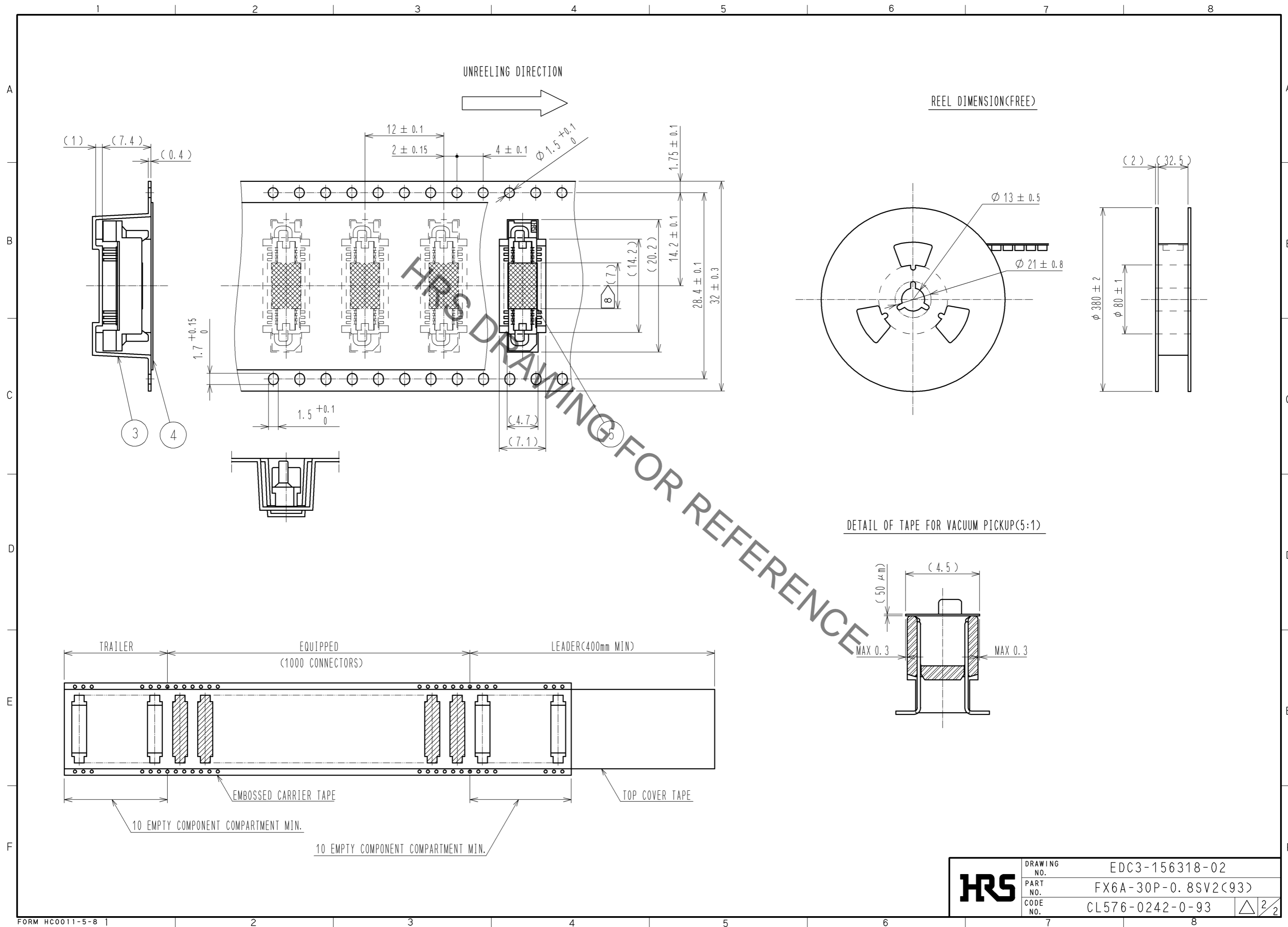
A-A (10:1)



- NOTE
- ① HRS MARK SHALL BE OPTIONAL.
 - ② LEAD CO-PLANARITY SHALL BE 0.1mm MAX.
 - ③ EMBOSSED CARRIER TAPE PACKAGING SHALL BE APPLIED TO THIS PRODUCT. SEE NEXT PAGE FOR DETAILS.
 - ④ THIS PRODUCT HAS TAPE FOR VACUUM PICKUP. SEE NEXT PAGE FOR DETAIL OF STICKING POSITION, ETC.
 - ⑤ FOR MODIFICATION, ETC. PREVENTIVE HOLE FOR SINK MARK MAY BE ADDED ACCORDING TO CIRCUMSTANCES.
 - ⑥ THE DIMENSIONS IN PARENTHESES ARE FOR REFERENCE.
 - ⑦ 1 REEL : 1000 CONNECTORS.
 - ⑧ REMOVE THE VACUUM PICKUP TAPE AFTER MOUNTING THE CONNECTOR.

| 2 | PHOSPHOR BRONZE | CONTACT AREA: GOLD 0.1 μm min. | 5 | POLYIMIDE | (TAPE FOR VACUUM PICKUP) | | | |
|--------------------------------------|-----------------|----------------------------------|----------|------------------------------|--------------------------|--------------|---------|------|
| | | LEAD AREA: TIN-PLATING 1 μm min. | | 4 | POLYESTER | (COVER TAPE) | | |
| 1 | PPS | UNDER PLATING: NICKEL 1 μm min. | 3 | POLYSTYRENE | (EMBOSSED CARRIER TAPE) | | | |
| | | LIGHT BROWN (UL94V-0) | | | | | | |
| NO. | MATERIAL | FINISH . REMARKS | NO. | MATERIAL | FINISH . REMARKS | | | |
| UNITS mm | | SCALE 2 : 1 | | DESCRIPTION OF REVISIONS | | DESIGNED | CHECKED | DATE |
| HRS HIROSE ELECTRIC CO., LTD. | | APPROVED : HS. OKAWA | 13.08.28 | DRAWING NO. EDC3-156318-02 | | | | |
| | | CHECKED : HT. YAMAGUCHI | 13.08.27 | PART NO. FX6A-30P-0.8SV2(93) | | | | |
| | | DESIGNED : TH. SANO | 13.08.27 | CODE NO. CL576-0242-0-93 | | | | |
| | | DRAWN : TH. SANO | 13.08.27 | | | | | |

May.1.2023 Copyright 2023 HIROSE ELECTRIC CO., LTD. All Rights Reserved.
 In case of consideration for using Automotive equipment / device which demand high reliability, kindly contact our sales window correspondents.



| | | |
|------------|-------------|---------------------|
| HRS | DRAWING NO. | EDC3-156318-02 |
| | PART NO. | FX6A-30P-0.8SV2(93) |
| | CODE NO. | CL576-0242-0-93 |
| | | △ 2/2 |